

MLS Area: Lincolnshire



ART WILSON
Broker, Realtor
847-363-1599
Art.Wilson@cbexchange.com



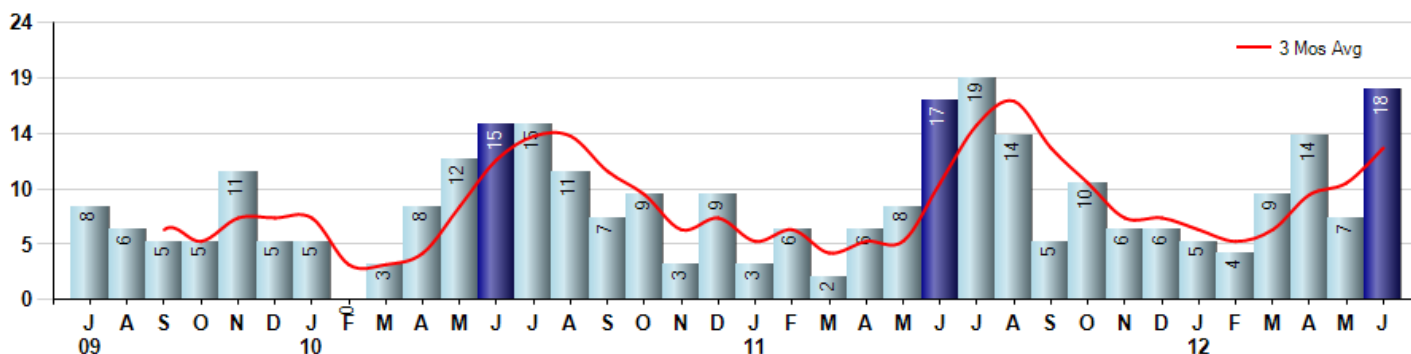
Price Range: ALL | Properties: Single Family Home, Townhome, Condo

Market Profile & Trends Overview	Month	Trending Versus*:				YTD	Trending Versus*:	
		LM	L3M	PYM	LY		PriorYTD	PriorYear
Median List Price of all Current Listings	\$489,800	↑		↔				
Average List Price of all Current Listings	\$523,903	↔		↓				
June Median Sales Price	\$462,750	↔	↑	↑	↑	\$442,000	↓	↑
June Average Sales Price	\$563,944	↑	↑	↑	↑	\$491,764	↓	↑
Total Properties Currently for Sale (Inventory)	91	↑		↓				
June Number of Properties Sold	18	↑		↑		57	↑	
June Average Days on Market (Solds)	97	↑	↓	↓	↓	130	↓	↓
June Month's Supply of Inventory	5.1	↓	↓	↓	↓	11.7	↓	↓
June Sale Price vs List Price Ratio	93.5%	↓	↔	↑	↑	92.7%	↑	↑

* LM=Last Month / L3M=Last 3 Months / PYM=Same Month Prior Year / LY=Last Year / YTD = Year-to-date

Property Sales

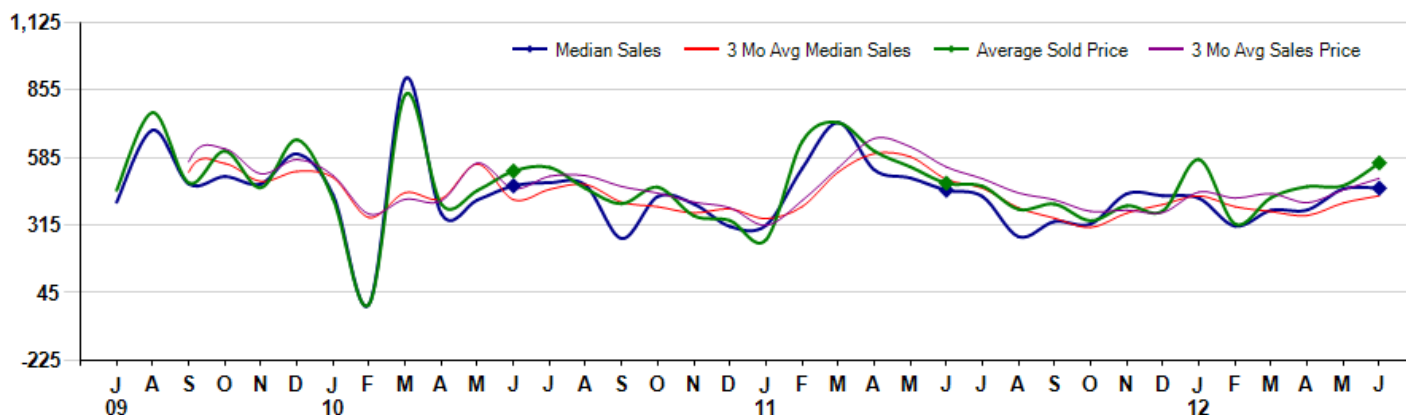
June Property sales were 18, up 5.9% from 17 in June of 2011 and 157.1% higher than the 7 sales last month. June 2012 sales were at their highest level compared to June of 2011 and 2010. June YTD sales of 57 are running 35.7% ahead of last year's year-to-date sales of 42.



Prices

The Median Sales Price in June was \$462,750, up 1.7% from \$455,000 in June of 2011 and up 0.6% from \$460,000 last month. The Average Sales Price in June was \$563,944, up 16.9% from \$482,588 in June of 2011 and up 19.2% from \$473,214 last month. June 2012 ASP was at highest level compared to June of 2011 and 2010.

Median means Middle (the same # of properties sold above and below Median) (000's)



MLS Area: Lincolnshire

Price Range: ALL | Properties: Single Family Home, Townhome, Condo



ART WILSON
Broker, Realtor
847-363-1599
Art.Wilson@cbexchange.com

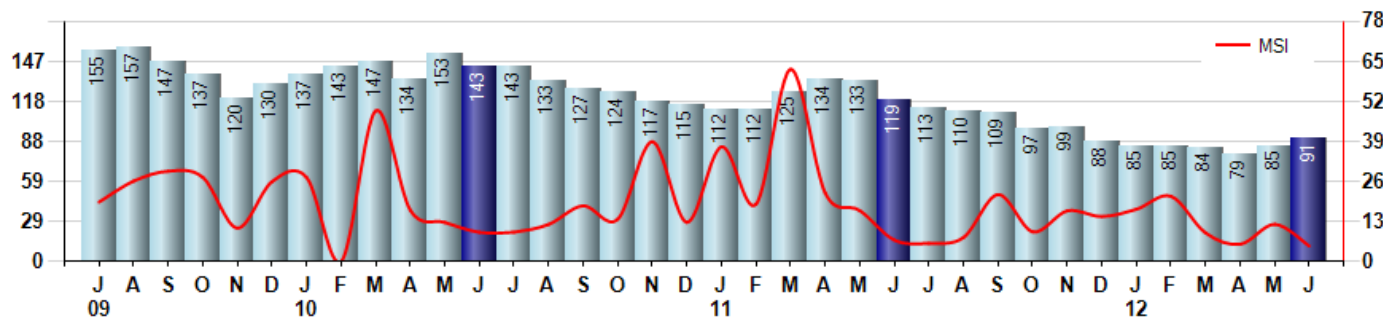


Inventory & MSI

The Total Inventory of Properties available for sale as of June was 91, up 7.1% from 85 last month and down -23.5% from 119 in June of last year. June 2012 Inventory was at the lowest level compared to June of 2011 and 2010.

A comparatively lower MSI is more beneficial for sellers while a higher MSI is better for buyers. The June 2012 MSI of 5.1 months was at its lowest level compared with June of 2011 and 2010.

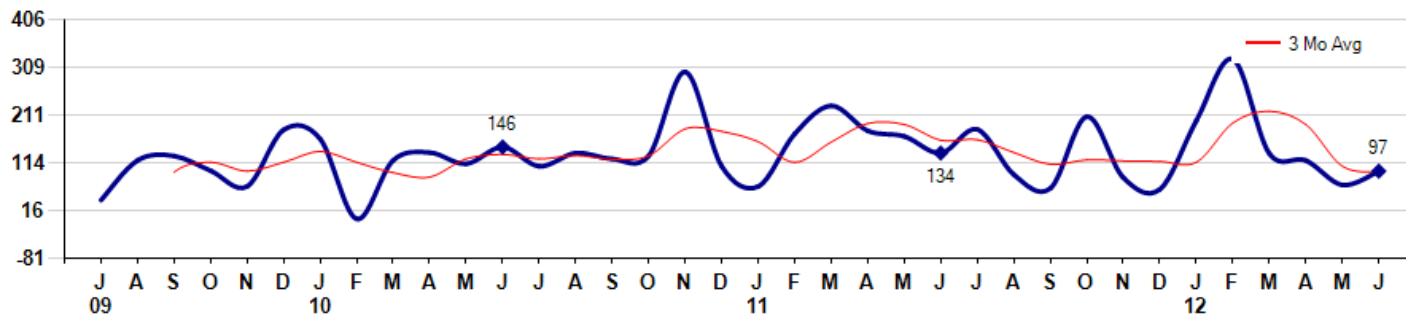
MSI is the # of months needed to sell all of the Inventory at the monthly Sales Pace



Market Time

The average Days On Market (DOM) shows how many days the average Property is on the Market before it sells. An upward trend in DOM tends to indicate a move towards more of a Buyer's market, a downward trend a move towards more of a Seller's market. The DOM for June was 97, up 40.6% from 69 days last month and down -27.6% from 134 days in June of last year. The June 2012 DOM was at its lowest level compared with June of 2011 and 2010.

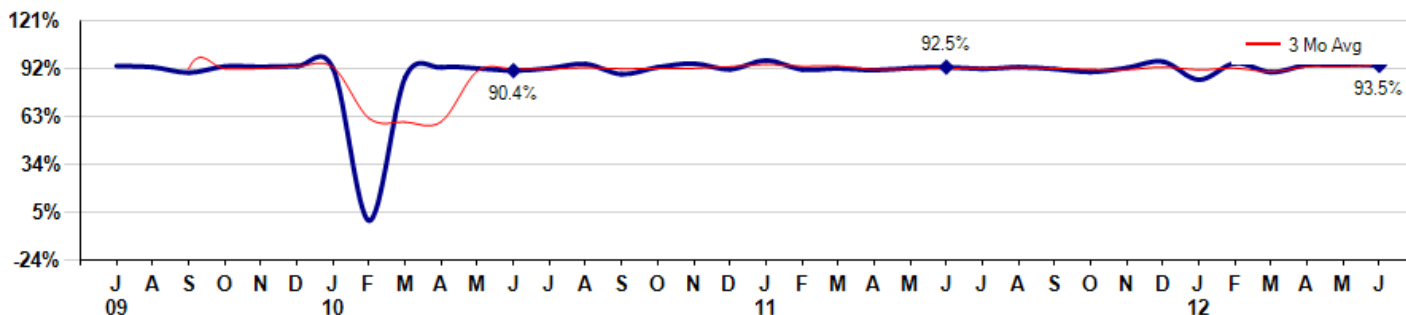
Average Days on Market (Listing to Contract) for properties sold during the month



Selling Price vs Listing Price

The Selling Price vs Listing Price reveals the average amount that Sellers are agreeing to come down from their list price. The lower the ratio is below 100% the more of a Buyer's market exists, a ratio at or above 100% indicates more of a Seller's market. The June 2012 Selling Price vs List Price of 93.5% was down from 94.4% last month and up from 92.5% in June of last year.

Avg Selling Price divided by Avg Listing Price for sold properties during the month



Based on information from Midwest Real Estate Data LLC for the period 7/1/2009 through 6/30/2012. Due to MLS reporting methods and allowable reporting policy, this data is only informational and may not be completely accurate. Therefore, Coldwell Banker Residential Brokerage does not guarantee the data accuracy. Data maintained by the MLS's may not reflect all real estate activity in the market.



MLS Area: Lincolnshire



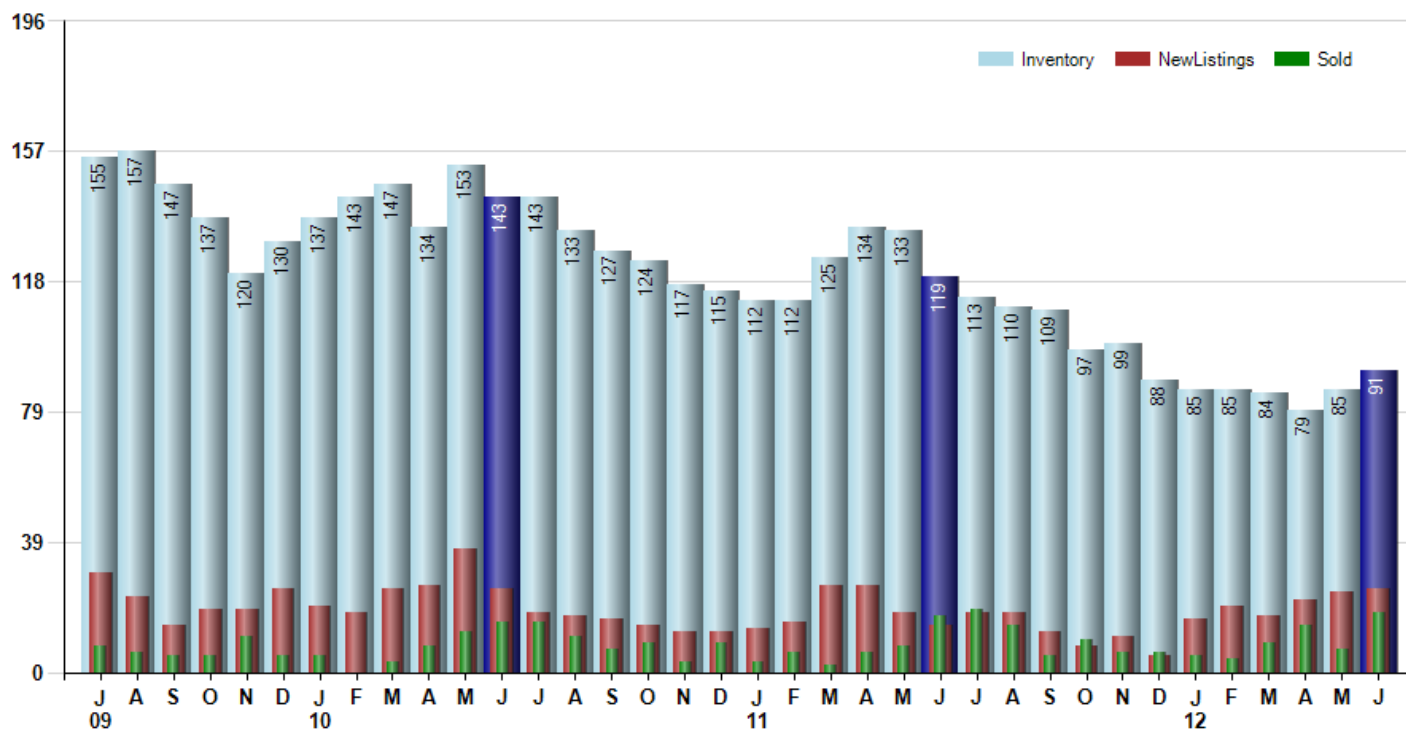
ART WILSON
Broker, Realtor
847-363-1599
Art.Wilson@cbexchange.com



Price Range: ALL | Properties: Single Family Home, Townhome, Condo

Inventory / New Listings / Sales

This last view of the market combines monthly inventory of Properties for sale along with New Listings and Sales. The graph shows the basic annual seasonality of the market as well as the relationship between these items. The number of New Listings in June 2012 was 25, up 4.2% from 24 last month and up 78.6% from 14 in June of last year.



Based on information from Midwest Real Estate Data LLC for the period 7/1/2009 through 6/30/2012. Due to MLS reporting methods and allowable reporting policy, this data is only informational and may not be completely accurate. Therefore, Coldwell Banker Residential Brokerage does not guarantee the data accuracy. Data maintained by the MLS's may not reflect all real estate activity in the market.



MARKET ACTION REPORT

June 2012

MLS Area: Lincolnshire



ART WILSON
 Broker, Realtor
 847-363-1599
 Art.Wilson@cbexchange.com



Price Range: ALL | Properties: Single Family Home, Townhome, Condo

	J 09	A	S	O	N	D	J 10	F	M	A	M	J	J	A	S	O	N	D	J 11	F	M	A	M	J	J	A	S	O	N	D	J 12	F	M	A	M	J
Homes Sold	8	6	5	5	11	5	5	0	3	8	12	15	15	11	7	9	3	9	3	6	2	6	8	17	19	14	5	10	6	6	5	4	9	14	7	18
3 Mo. Roll Avg			6	5	7	7	7	3	3	4	8	12	14	14	11	9	6	7	5	6	4	5	5	10	15	17	13	10	7	7	6	5	6	9	10	13

(000's)	J 09	A	S	O	N	D	J 10	F	M	A	M	J	J	A	S	O	N	D	J 11	F	M	A	M	J	J	A	S	O	N	D	J 12	F	M	A	M	J
Median Sale Price	407	695	480	510	480	600	436	0	900	362	416	473	485	475	262	430	400	310	315	541	725	537	504	455	430	269	330	320	441	433	423	311	375	375	460	463
3 Mo. Roll Avg			527	562	490	530	505	345	445	421	559	417	458	478	407	389	364	380	342	389	527	601	588	498	463	385	343	306	364	398	432	389	370	354	403	433

	J 09	A	S	O	N	D	J 10	F	M	A	M	J	J	A	S	O	N	D	J 11	F	M	A	M	J	J	A	S	O	N	D	J 12	F	M	A	M	J
Inventory	155	157	147	137	120	130	137	143	147	134	153	143	143	133	127	124	117	115	112	112	125	134	133	119	113	110	109	97	99	88	85	85	84	79	85	91
MSI	19	26	29	27	11	26	27	0	49	17	13	10	10	12	18	14	39	13	37	19	63	22	17	7	6	8	22	10	17	15	17	21	9	6	12	5

	J 09	A	S	O	N	D	J 10	F	M	A	M	J	J	A	S	O	N	D	J 11	F	M	A	M	J	J	A	S	O	N	D	J 12	F	M	A	M	J
Days On Market	38	119	128	98	66	181	163	0	119	135	112	146	107	134	122	128	299	107	66	173	230	179	168	134	182	90	62	208	84	60	200	325	133	119	69	97
3 Mo. Roll Avg			95	115	97	115	137	115	94	85	122	131	122	129	121	128	183	178	157	115	156	194	192	160	161	135	111	120	118	117	115	195	219	192	107	95

	J 09	A	S	O	N	D	J 10	F	M	A	M	J	J	A	S	O	N	D	J 11	F	M	A	M	J	J	A	S	O	N	D	J 12	F	M	A	M	J
Price per Sq Ft	194	160	183	190	184	132	160	0	202	164	168	184	170	171	159	161	160	146	123	170	188	195	174	168	159	131	149	121	141	135	137	142	125	153	182	176
3 Mo. Roll Avg			179	178	186	169	159	97	121	122	178	172	174	175	167	164	160	156	143	146	160	184	186	179	167	153	146	134	137	132	138	138	135	140	153	170

	J 09	A	S	O	N	D	J 10	F	M	A	M	J	J	A	S	O	N	D	J 11	F	M	A	M	J	J	A	S	O	N	D	J 12	F	M	A	M	J
Sale to List Price	0.932	0.925	0.892	0.930	0.927	0.931	0.917	0.000	0.864	0.924	0.918	0.904	0.919	0.944	0.883	0.925	0.947	0.912	0.966	0.911	0.917	0.907	0.920	0.925	0.915	0.925	0.914	0.896	0.921	0.959	0.849	0.949	0.895	0.939	0.944	0.935
3 Mo. Roll Avg			0.916	0.916	0.916	0.929	0.925	0.616	0.594	0.596	0.902	0.915	0.914	0.922	0.915	0.917	0.918	0.928	0.942	0.930	0.931	0.912	0.915	0.917	0.920	0.922	0.918	0.912	0.910	0.925	0.910	0.919	0.898	0.928	0.926	0.939

	J 09	A	S	O	N	D	J 10	F	M	A	M	J	J	A	S	O	N	D	J 11	F	M	A	M	J	J	A	S	O	N	D	J 12	F	M	A	M	J
New Listings	30	23	14	19	19	25	20	18	25	26	37	25	18	17	16	14	12	12	13	15	26	26	18	14	18	18	12	8	11	5	16	20	17	22	24	25
Inventory	155	157	147	137	120	130	137	143	147	134	153	143	143	133	127	124	117	115	112	112	125	134	133	119	113	110	109	97	99	88	85	85	84	79	85	91
Sales	8	6	5	5	11	5	5	0	3	8	12	15	15	11	7	9	3	9	3	6	2	6	8	17	19	14	5	10	6	6	5	4	9	14	7	18

(000's)	J 09	A	S	O	N	D	J 10	F	M	A	M	J	J	A	S	O	N	D	J 11	F	M	A	M	J	J	A	S	O	N	D	J 12	F	M	A	M	J
Avg Sale Price	455	765	484	611	465	656	420	0	836	400	454	531	546	462	401	467	353	334	257	648	725	611	548	483	471	378	400	333	393	372	578	321	425	469	473	564
3 Mo. Roll Avg			568	620	520	578	514	359	419	412	563	462	510	513	470	443	407	385	315	413	543	662	628	547	501	444	416	370	375	366	447	423	441	405	456	502

Based on information from Midwest Real Estate Data LLC for the period 7/1/2009 through 6/30/2012. Due to MLS reporting methods and allowable reporting policy, this data is only informational and may not be completely accurate. Therefore, Coldwell Banker Residential Brokerage does not guarantee the data accuracy. Data maintained by the MLS's may not reflect all real estate activity in the market.

