

MLS Area: Northbrook



ART WILSON
 Broker, Realtor
 847-363-1599
 Art.Wilson@cbexchange.com



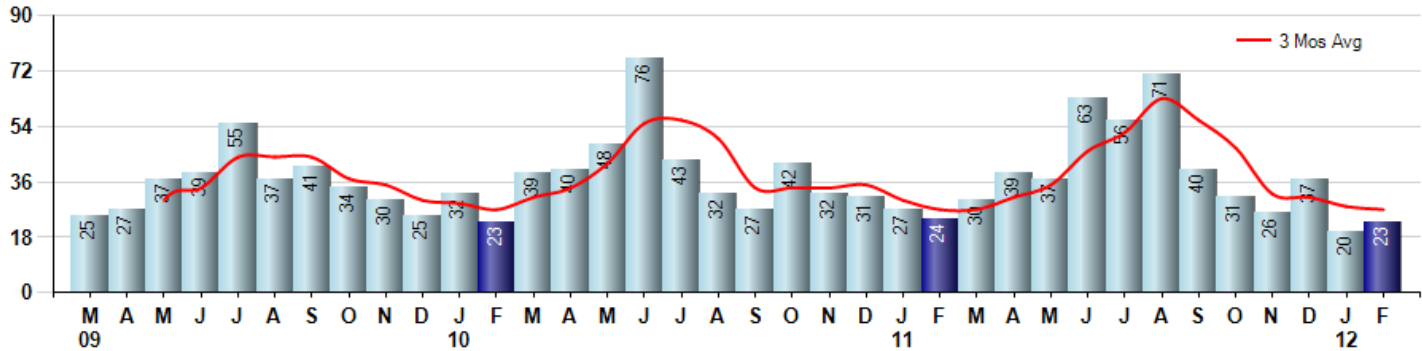
Price Range: ALL | Properties: Single Family Home, Townhome, Condo

Market Profile & Trends Overview	Month	Trending Versus*:				YTD	Trending Versus*:	
		LM	L3M	PYM	LY		PriorYTD	PriorYear
Median List Price of all Current Listings	\$449,900	↑		↑				
Average List Price of all Current Listings	\$583,491	↑		↑				
February Median Sales Price	\$180,449	↓	↓	↓	↓	\$227,000	↓	↓
February Average Sales Price	\$334,041	↓	↑	↓	↓	\$358,775	↓	↓
Total Properties Currently for Sale (Inventory)	270	↓		↓				
February Number of Properties Sold	23	↑		↓		43	↓	
February Average Days on Market (Solds)	83	↑		↓	↓	77	↓	↓
February Month's Supply of Inventory	11.7	↓	→	↓	↑	13.4	↓	↑
February Sale Price vs List Price Ratio	87.7%	↑	↑	↓	↑	88.5%	↑	↑

* LM=Last Month / L3M=Last 3 Months / PYM=Same Month Prior Year / LY=Last Year / YTD = Year-to-date

Property Sales

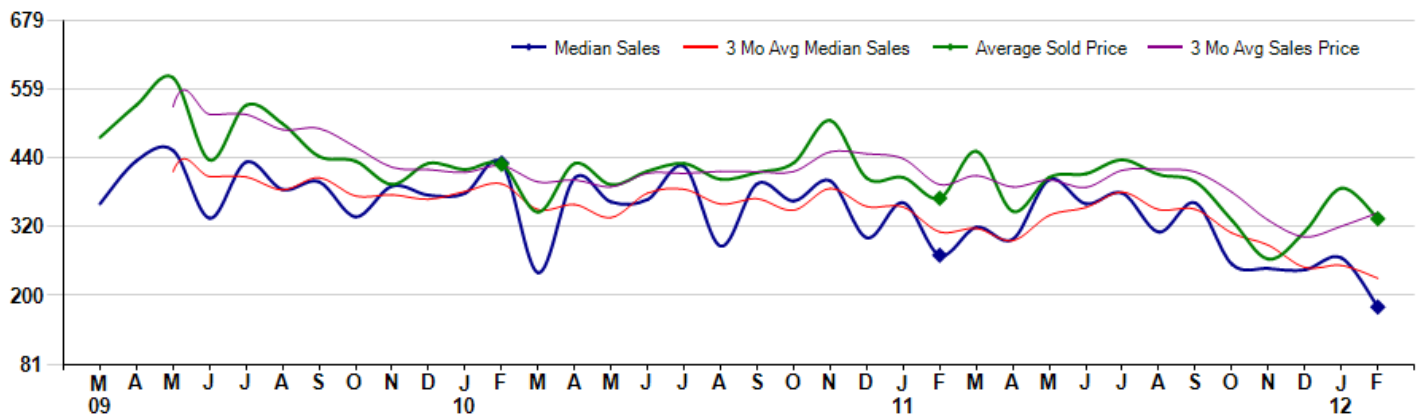
February Property sales were 23, down -4.2% from 24 in February of 2011 and 15.0% higher than the 20 sales last month. February 2012 sales were at their lowest level compared to February of 2011 and 2010. February YTD sales of 43 are running -15.7% behind last year's year-to-date sales of 51.



Prices

The Median Sales Price in February was \$180,449, down -33.3% from \$270,500 in February of 2011 and down -32.2% from \$266,000 last month. The Average Sales Price in February was \$334,041, down -9.7% from \$369,736 in February of 2011 and down -13.7% from \$387,219 last month. February 2012 ASP was at the lowest level compared to February of 2011 and 2010.

Median means Middle (the same # of properties sold above and below Median) (000's)



Based on information from Midwest Real Estate Data LLC for the period 3/1/2009 through 2/29/2012. Due to MLS reporting methods and allowable reporting policy, this data is only informational and may not be completely accurate. Therefore, Coldwell Banker Residential Brokerage does not guarantee the data accuracy. Data maintained by the MLS's may not reflect all real estate activity in the market.



MLS Area: Northbrook



ART WILSON
 Broker, Realtor
 847-363-1599
 Art.Wilson@cbexchange.com



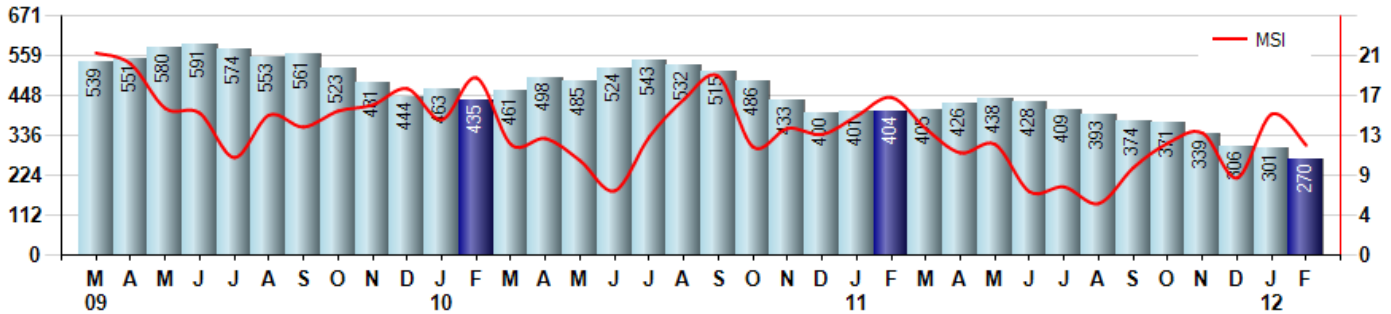
Price Range: ALL | Properties: Single Family Home, Townhome, Condo

Inventory & MSI

The Total Inventory of Properties available for sale as of February was 270, down -10.3% from 301 last month and down -33.2% from 404 in February of last year. February 2012 Inventory was at the lowest level compared to February of 2011 and 2010.

A comparatively lower MSI is more beneficial for sellers while a higher MSI is better for buyers. The February 2012 MSI of 11.7 months was at its lowest level compared with February of 2011 and 2010.

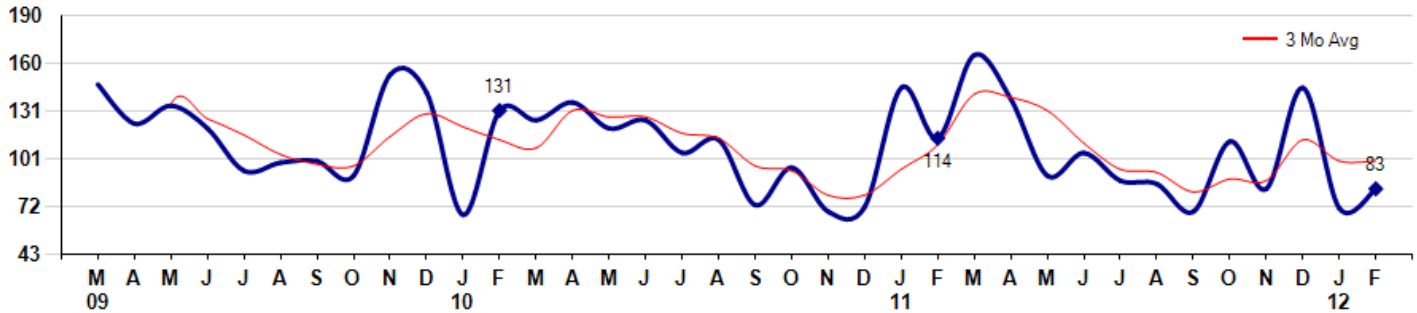
MSI is the # of months needed to sell all of the Inventory at the monthly Sales Pace



Market Time

The average Days On Market (DOM) shows how many days the average Property is on the Market before it sells. An upward trend in DOM tends to indicate a move towards more of a Buyer's market, a downward trend a move towards more of a Seller's market. The DOM for February was 83, up 16.9% from 71 days last month and down -27.2% from 114 days in February of last year. The February 2012 DOM was at its lowest level compared with February of 2011 and 2010.

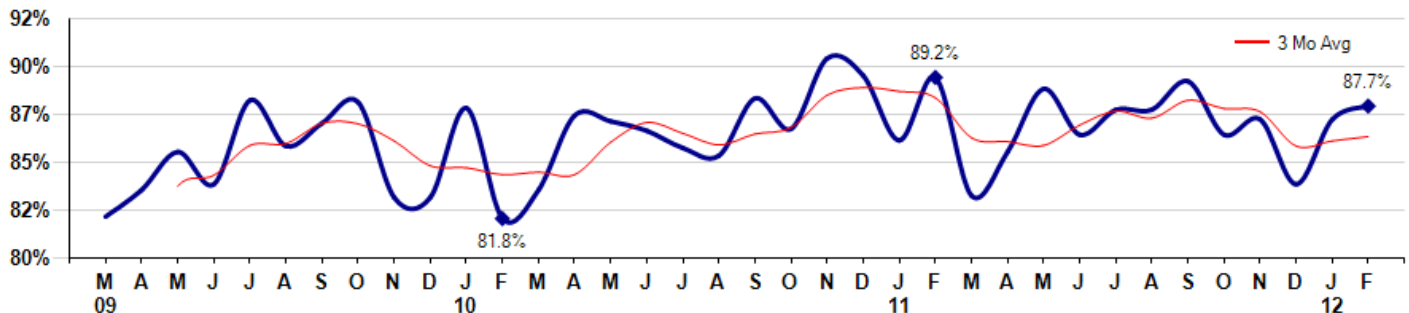
Average Days on Market (Listing to Contract) for properties sold during the month



Selling Price vs Original Listing Price

The Selling Price vs Original Listing Price reveals the average amount that Sellers are agreeing to come down from their original list price. The lower the ratio is below 100% the more of a Buyer's market exists, a ratio at or above 100% indicates more of a Seller's market. The February 2012 Selling Price vs Original List Price of 87.7% was up from 87.0% last month and down from 89.2% in February of last year.

Avg Selling Price divided by Avg Listing Price for sold properties during the month



Based on information from Midwest Real Estate Data LLC for the period 3/1/2009 through 2/29/2012. Due to MLS reporting methods and allowable reporting policy, this data is only informational and may not be completely accurate. Therefore, Coldwell Banker Residential Brokerage does not guarantee the data accuracy. Data maintained by the MLS's may not reflect all real estate activity in the market.



MLS Area: Northbrook



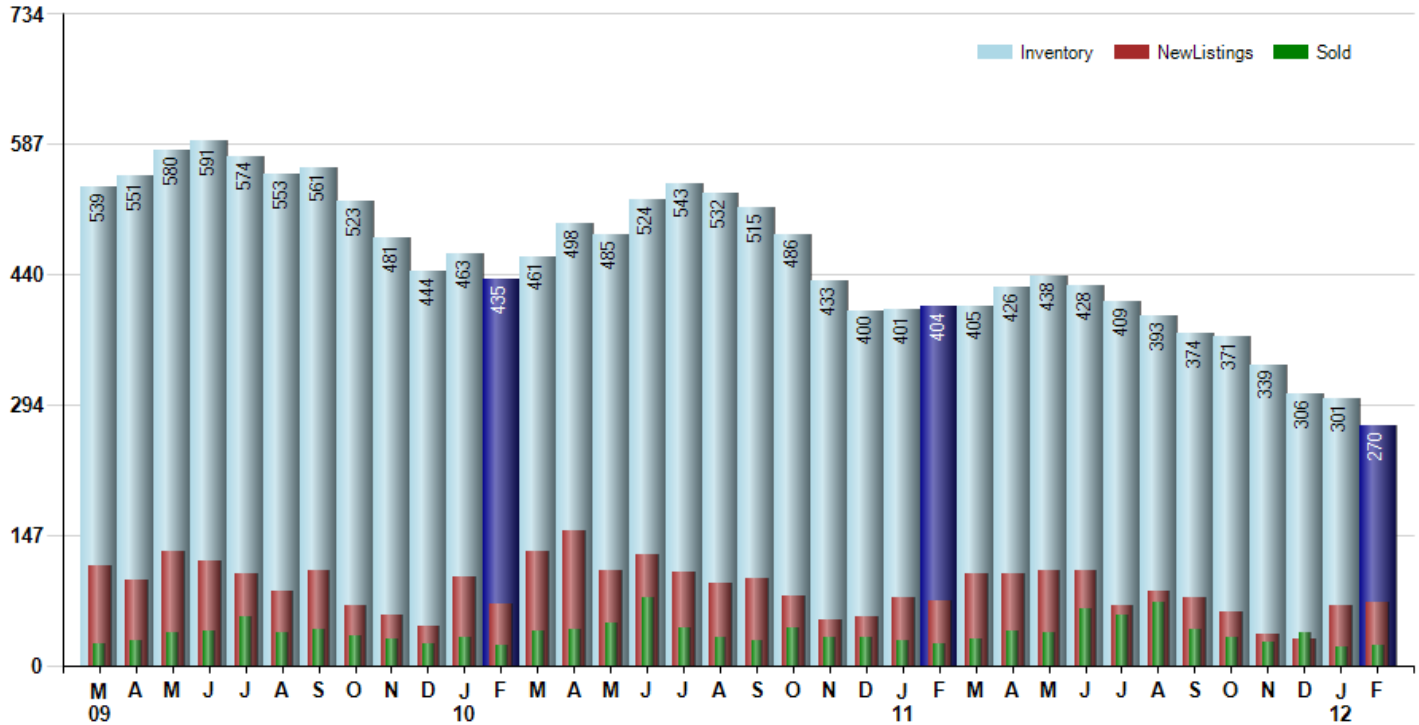
ART WILSON
 Broker, Realtor
 847-363-1599
 Art.Wilson@cbexchange.com



Price Range: ALL | Properties: Single Family Home, Townhome, Condo

Inventory / New Listings / Sales

This last view of the market combines monthly inventory of Properties for sale along with New Listings and Sales. The graph shows the basic annual seasonality of the market as well as the relationship between these items. The number of New Listings in February 2012 was 70, up 4.5% from 67 last month and down -4.1% from 73 in February of last year.



Based on information from Midwest Real Estate Data LLC for the period 3/1/2009 through 2/29/2012. Due to MLS reporting methods and allowable reporting policy, this data is only informational and may not be completely accurate. Therefore, Coldwell Banker Residential Brokerage does not guarantee the data accuracy. Data maintained by the MLS's may not reflect all real estate activity in the market.



MARKET ACTION REPORT

February 2012

MLS Area: Northbrook



ART WILSON
 Broker, Realtor
 847-363-1599
 Art.Wilson@cbexchange.com



Price Range: ALL | Properties: Single Family Home, Townhome, Condo

	M 09	A	M	J	J	A	S	O	N	D	J 10	F	M	A	M	J	J	A	S	O	N	D	J 11	F	M	A	M	J	J	A	S	O	N	D	J 12	F
Homes Sold	25	27	37	39	55	37	41	34	30	25	32	23	39	40	48	76	43	32	27	42	32	31	27	24	30	39	37	63	56	71	40	31	26	37	20	23
3 Mo. Roll Avg			30	34	44	44	44	37	35	30	29	27	31	34	42	55	56	50	34	34	34	35	30	27	27	31	35	46	52	63	56	47	32	31	28	27

	(000's) M 09	A	M	J	J	A	S	O	N	D	J 10	F	M	A	M	J	J	A	S	O	N	D	J 11	F	M	A	M	J	J	A	S	O	N	D	J 12	F
Median Sale Price	360	435	453	335	433	385	399	338	391	375	379	431	240	405	363	368	425	286	395	365	400	301	362	271	319	299	402	360	379	311	362	255	248	245	266	180
3 Mo. Roll Avg			416	408	407	384	405	374	376	368	382	395	350	359	336	379	385	360	369	349	387	355	354	311	317	296	340	354	380	350	350	309	288	249	253	230

	M 09	A	M	J	J	A	S	O	N	D	J 10	F	M	A	M	J	J	A	S	O	N	D	J 11	F	M	A	M	J	J	A	S	O	N	D	J 12	F
Inventory	539	551	580	591	574	553	561	523	481	444	463	435	461	498	485	524	543	532	515	486	433	400	401	404	405	426	438	428	409	393	374	371	339	306	301	270
MSI	22	20	16	15	10	15	14	15	16	18	14	19	12	12	10	7	13	17	19	12	14	13	15	17	14	11	12	7	7	6	9	12	13	8	15	12

	M 09	A	M	J	J	A	S	O	N	D	J 10	F	M	A	M	J	J	A	S	O	N	D	J 11	F	M	A	M	J	J	A	S	O	N	D	J 12	F
Days On Market	147	123	134	120	94	99	100	91	153	142	67	131	125	136	120	125	105	113	73	96	69	72	145	114	165	138	91	105	88	86	69	112	83	145	71	83
3 Mo. Roll Avg			135	126	116	104	98	97	115	129	121	113	108	131	127	127	117	114	97	94	79	79	95	110	141	139	131	111	95	93	81	89	88	113	100	100

	M 09	A	M	J	J	A	S	O	N	D	J 10	F	M	A	M	J	J	A	S	O	N	D	J 11	F	M	A	M	J	J	A	S	O	N	D	J 12	F
Price per Sq Ft	207	194	205	181	204	189	183	194	193	184	159	165	153	167	172	162	178	176	168	171	173	164	175	164	169	167	171	170	175	167	166	145	165	157	159	134
3 Mo. Roll Avg			202	193	197	191	192	189	190	190	179	169	159	162	164	167	171	172	174	172	171	169	171	168	169	167	169	169	172	171	169	159	159	156	160	150

	M 09	A	M	J	J	A	S	O	N	D	J 10	F	M	A	M	J	J	A	S	O	N	D	J 11	F	M	A	M	J	J	A	S	O	N	D	J 12	F
Sale to List Price	0.819	0.833	0.853	0.836	0.880	0.856	0.868	0.879	0.829	0.829	0.876	0.818	0.833	0.872	0.869	0.864	0.855	0.851	0.881	0.865	0.902	0.893	0.859	0.892	0.830	0.853	0.886	0.862	0.875	0.875	0.890	0.862	0.870	0.836	0.870	0.877
3 Mo. Roll Avg			0.835	0.841	0.856	0.857	0.868	0.868	0.859	0.846	0.845	0.841	0.842	0.841	0.858	0.868	0.863	0.857	0.862	0.866	0.883	0.887	0.885	0.881	0.860	0.858	0.856	0.867	0.874	0.871	0.880	0.876	0.874	0.856	0.859	0.861

	M 09	A	M	J	J	A	S	O	N	D	J 10	F	M	A	M	J	J	A	S	O	N	D	J 11	F	M	A	M	J	J	A	S	O	N	D	J 12	F
New Listings	113	96	129	118	104	83	107	67	57	44	100	69	128	152	107	125	105	93	98	78	51	54	76	73	103	103	107	107	68	84	77	60	35	30	67	70
Inventory	539	551	580	591	574	553	561	523	481	444	463	435	461	498	485	524	543	532	515	486	433	400	401	404	405	426	438	428	409	393	374	371	339	306	301	270
Sales	25	27	37	39	55	37	41	34	30	25	32	23	39	40	48	76	43	32	27	42	32	31	27	24	30	39	37	63	56	71	40	31	26	37	20	23

	(000's) M 09	A	M	J	J	A	S	O	N	D	J 10	F	M	A	M	J	J	A	S	O	N	D	J 11	F	M	A	M	J	J	A	S	O	N	D	J 12	F
Avg Sale Price	475	532	579	436	532	499	443	434	394	430	420	429	346	430	393	417	430	403	415	431	505	405	406	370	451	347	406	412	437	411	399	332	264	312	387	334
3 Mo. Roll Avg			529	516	516	489	491	459	424	420	415	426	398	402	390	413	413	416	416	416	450	447	439	393	409	389	402	388	418	420	415	380	331	302	321	344

