

## MLS Area: Northbrook



**ART WILSON**  
 Broker, Realtor  
 847-363-1599  
 Art.Wilson@cbexchange.com



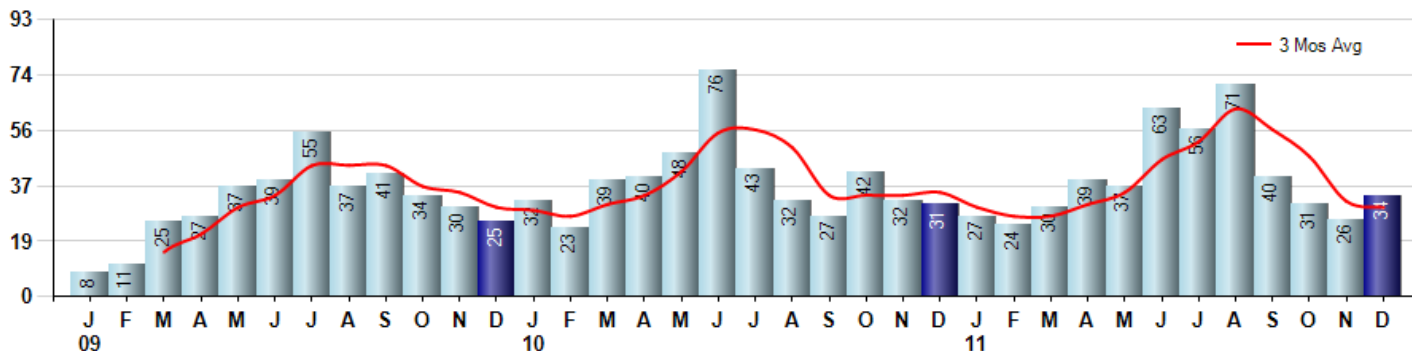
Price Range: ALL | Properties: Single Family Home, Townhome, Condo

Market Profile & Trends Overview	Month	Trending Versus*:				YTD	Trending Versus*:	
		LM	L3M	PYM	LY		PriorYTD	PriorYear
Median List Price of all Current Listings	\$389,450	↔		↑				
Average List Price of all Current Listings	\$547,752	↑		↓				
December Median Sales Price	\$256,250	↑	↓	↓	↓	\$320,000	↓	↓
December Average Sales Price	\$323,576	↑	↓	↓	↓	\$388,324	↓	↓
Total Properties Currently for Sale (Inventory)	286	↓		↓				
December Number of Properties Sold	34	↑		↑		478	↑	
December Average Days on Market (Solds)	131	↑	↑	↑	↑	106	↔	↓
December Month's Supply of Inventory	8.4	↓	↓	↓	↓	10.7	↓	↓
December Sale Price vs List Price Ratio	84.0%	↓	↓	↓	↓	87.0%	↑	↑

\* LM=Last Month / L3M=Last 3 Months / PYM=Same Month Prior Year / LY=Last Year / YTD = Year-to-date

### Property Sales

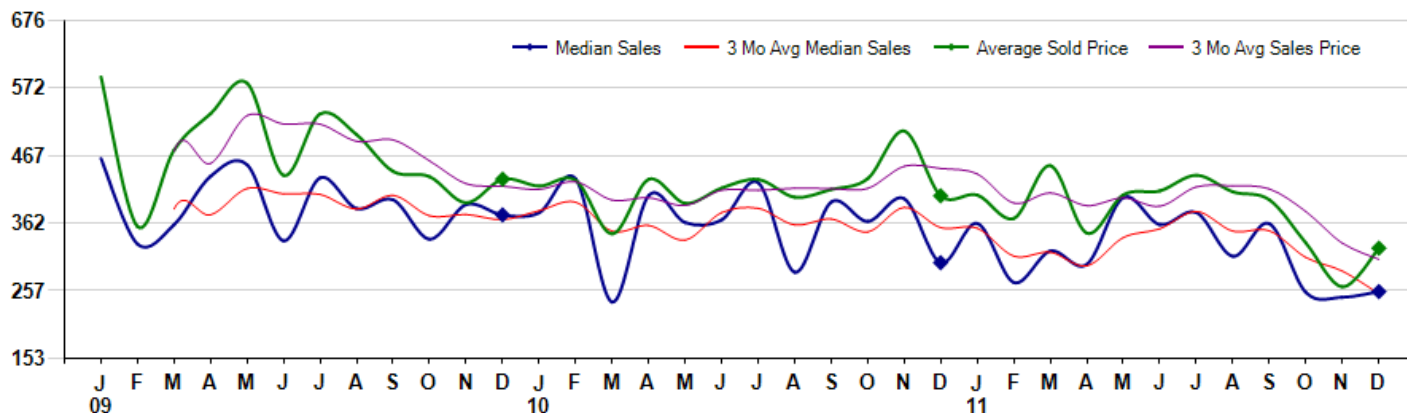
December Property sales were 34, up 9.7% from 31 in December of 2010 and 30.8% higher than the 26 sales last month. December 2011 sales were at their highest level compared to December of 2010 and 2009. December YTD sales of 478 are running 2.8% ahead of last year's year-to-date sales of 465.



### Prices

The Median Sales Price in December was \$256,250, down -14.9% from \$301,000 in December of 2010 and up 3.5% from \$247,500 last month. The Average Sales Price in December was \$323,576, down -20.0% from \$404,669 in December of 2010 and up 22.7% from \$263,817 last month. December 2011 ASP was at the lowest level compared to December of 2010 and 2009.

Median means Middle (the same # of properties sold above and below Median) (000's)



## MLS Area: Northbrook



**ART WILSON**  
 Broker, Realtor  
 847-363-1599  
 Art.Wilson@cbexchange.com



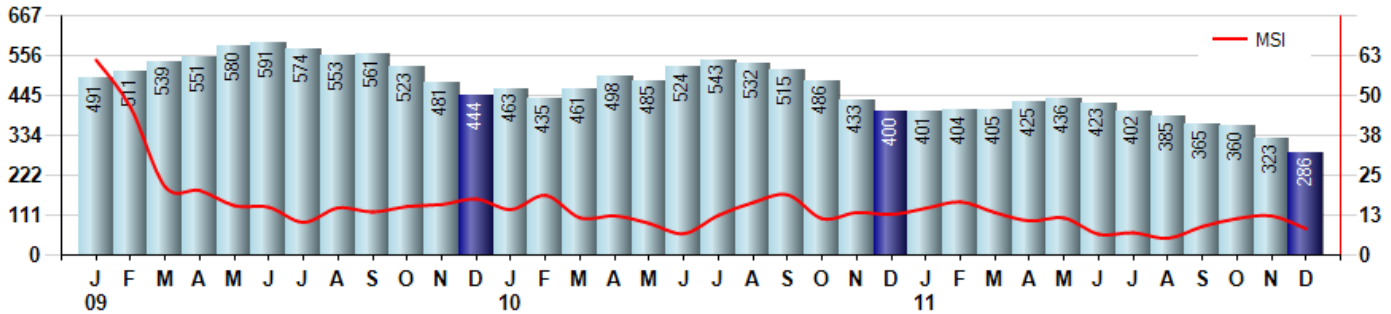
Price Range: ALL | Properties: Single Family Home, Townhome, Condo

### Inventory & MSI

The Total Inventory of Properties available for sale as of December was 286, down -11.5% from 323 last month and down -28.5% from 400 in December of last year. December 2011 Inventory was at the lowest level compared to December of 2010 and 2009.

A comparatively lower MSI is more beneficial for sellers while a higher MSI is better for buyers. The December 2011 MSI of 8.4 months was at its lowest level compared with December of 2010 and 2009.

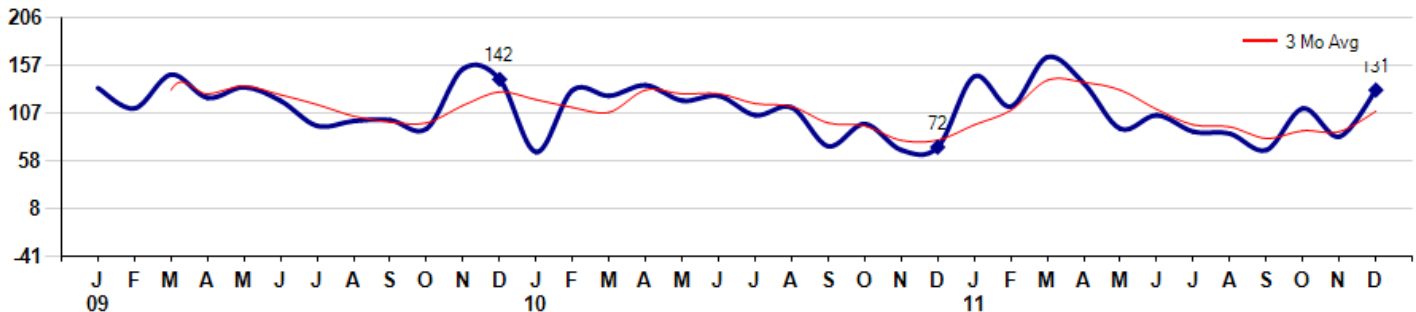
MSI is the # of months needed to sell all of the Inventory at the monthly Sales Pace



### Market Time

The average Days On Market (DOM) shows how many days the average Property is on the Market before it sells. An upward trend in DOM tends to indicate a move towards more of a Buyer's market, a downward trend a move towards more of a Seller's market. The DOM for December was 131, up 57.8% from 83 days last month and up 81.9% from 72 days in December of last year. The December 2011 DOM was at a mid range compared with December of 2010 and 2009.

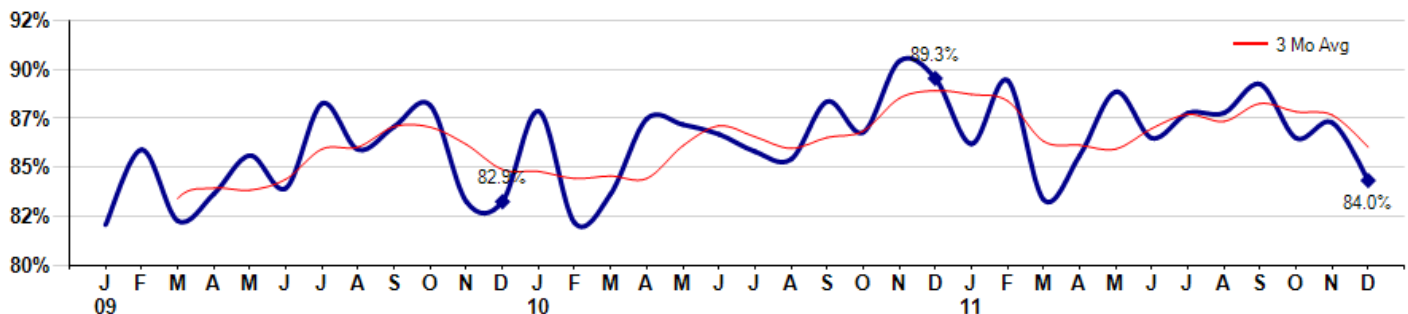
Average Days on Market (Listing to Contract) for properties sold during the month



### Selling Price vs Original Listing Price

The Selling Price vs Original Listing Price reveals the average amount that Sellers are agreeing to come down from their original list price. The lower the ratio is below 100% the more of a Buyer's market exists, a ratio at or above 100% indicates more of a Seller's market. The December 2011 Selling Price vs Original List Price of 84.0% was down from 87.0% last month and down from 89.3% in December of last year.

Avg Selling Price divided by Avg Listing Price for sold properties during the month



Based on information from Midwest Real Estate Data LLC for the period 1/1/2009 through 12/31/2011. Due to MLS reporting methods and allowable reporting policy, this data is only informational and may not be completely accurate. Therefore, Coldwell Banker Residential Brokerage does not guarantee the data accuracy. Data maintained by the MLS's may not reflect all real estate activity in the market.



## MLS Area: Northbrook



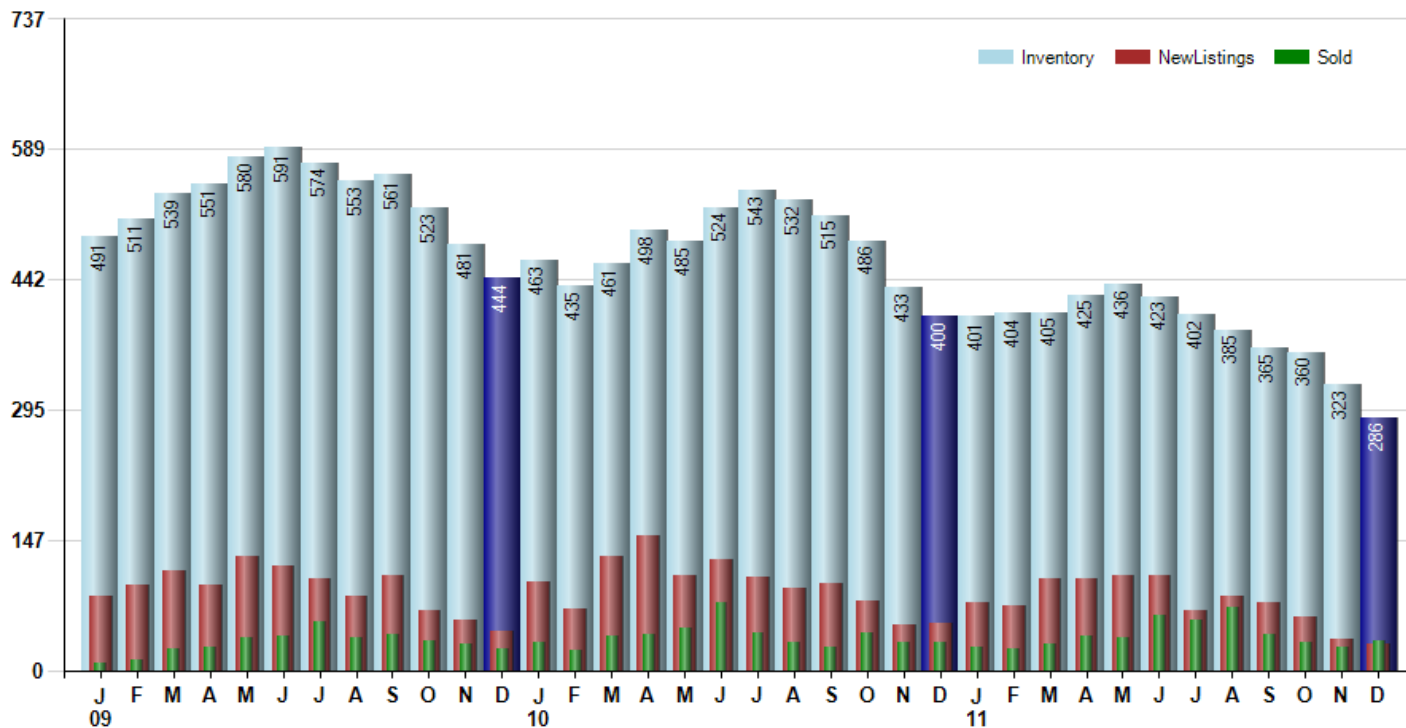
**ART WILSON**  
 Broker, Realtor  
 847-363-1599  
 Art.Wilson@cbexchange.com



Price Range: ALL | Properties: Single Family Home, Townhome, Condo

### Inventory / New Listings / Sales

This last view of the market combines monthly inventory of Properties for sale along with New Listings and Sales. The graph shows the basic annual seasonality of the market as well as the relationship between these items. The number of New Listings in December 2011 was 29, down -17.1% from 35 last month and down -46.3% from 54 in December of last year.



Based on information from Midwest Real Estate Data LLC for the period 1/1/2009 through 12/31/2011. Due to MLS reporting methods and allowable reporting policy, this data is only informational and may not be completely accurate. Therefore, Coldwell Banker Residential Brokerage does not guarantee the data accuracy. Data maintained by the MLS's may not reflect all real estate activity in the market.



# MARKET ACTION REPORT

December 2011

## MLS Area: Northbrook



**ART WILSON**  
 Broker, Realtor  
 847-363-1599  
 Art.Wilson@cbexchange.com



Price Range: ALL | Properties: Single Family Home, Townhome, Condo

	J 09	F	M	A	M	J	J	A	S	O	N	D	J 10	F	M	A	M	J	J	A	S	O	N	D	J 11	F	M	A	M	J	J	A	S	O	N	D
Homes Sold	8	11	25	27	37	39	55	37	41	34	30	25	32	23	39	40	48	76	43	32	27	42	32	31	27	24	30	39	37	63	56	71	40	31	26	34
3 Mo. Roll Avg			15	21	30	34	44	44	44	37	35	30	29	27	31	34	42	55	56	50	34	34	34	35	30	27	27	31	35	46	52	63	56	47	32	30

(000's)	J 09	F	M	A	M	J	J	A	S	O	N	D	J 10	F	M	A	M	J	J	A	S	O	N	D	J 11	F	M	A	M	J	J	A	S	O	N	D
Median Sale Price	463	330	360	435	453	335	433	385	399	338	391	375	379	431	240	405	363	368	425	286	395	365	400	301	362	271	319	299	402	360	379	311	362	255	248	256
3 Mo. Roll Avg			384	375	416	408	407	384	405	374	376	368	382	395	350	359	336	379	385	360	369	349	387	355	354	311	317	296	340	354	380	350	350	309	288	253

	J 09	F	M	A	M	J	J	A	S	O	N	D	J 10	F	M	A	M	J	J	A	S	O	N	D	J 11	F	M	A	M	J	J	A	S	O	N	D
Inventory	491	511	539	551	580	591	574	553	561	523	481	444	463	435	461	498	485	524	543	532	515	486	433	400	401	404	405	425	436	423	402	385	365	360	323	286
MSI	61	46	22	20	16	15	10	15	14	15	16	18	14	19	12	12	10	7	13	17	19	12	14	13	15	17	14	11	12	7	7	5	9	12	12	8

	J 09	F	M	A	M	J	J	A	S	O	N	D	J 10	F	M	A	M	J	J	A	S	O	N	D	J 11	F	M	A	M	J	J	A	S	O	N	D
Days On Market	133	112	147	123	134	120	94	99	100	91	153	142	67	131	125	136	120	125	105	113	73	96	69	72	145	114	165	138	91	105	88	86	69	112	83	131
3 Mo. Roll Avg			131	127	135	126	116	104	98	97	115	129	121	113	108	131	127	127	117	114	97	94	79	79	95	110	141	139	131	111	95	93	81	89	88	109

	J 09	F	M	A	M	J	J	A	S	O	N	D	J 10	F	M	A	M	J	J	A	S	O	N	D	J 11	F	M	A	M	J	J	A	S	O	N	D
Price per Sq Ft	0	180	207	194	205	181	204	189	183	194	193	184	159	165	153	167	172	162	178	176	168	171	173	164	175	164	169	167	171	170	175	167	166	145	165	159
3 Mo. Roll Avg			129	194	202	193	197	191	192	189	190	190	179	169	159	162	164	167	171	172	174	172	171	169	171	168	169	167	169	169	172	171	169	159	159	156

	J 09	F	M	A	M	J	J	A	S	O	N	D	J 10	F	M	A	M	J	J	A	S	O	N	D	J 11	F	M	A	M	J	J	A	S	O	N	D
Sale to List Price	0.817	0.856	0.819	0.833	0.853	0.836	0.880	0.856	0.868	0.879	0.829	0.829	0.876	0.818	0.833	0.872	0.869	0.864	0.855	0.851	0.881	0.865	0.902	0.893	0.859	0.892	0.830	0.853	0.886	0.862	0.875	0.875	0.890	0.862	0.870	0.840
3 Mo. Roll Avg			0.831	0.836	0.835	0.841	0.856	0.857	0.868	0.868	0.859	0.846	0.845	0.841	0.842	0.841	0.858	0.868	0.863	0.857	0.862	0.866	0.883	0.887	0.885	0.881	0.860	0.858	0.856	0.867	0.874	0.871	0.880	0.876	0.874	0.857

	J 09	F	M	A	M	J	J	A	S	O	N	D	J 10	F	M	A	M	J	J	A	S	O	N	D	J 11	F	M	A	M	J	J	A	S	O	N	D
New Listings	83	97	113	96	129	118	104	83	107	67	57	44	100	69	128	152	107	125	105	93	98	78	51	54	76	73	103	103	107	107	68	84	77	61	35	29
Inventory	491	511	539	551	580	591	574	553	561	523	481	444	463	435	461	498	485	524	543	532	515	486	433	400	401	404	405	425	436	423	402	385	365	360	323	286
Sales	8	11	25	27	37	39	55	37	41	34	30	25	32	23	39	40	48	76	43	32	27	42	32	31	27	24	30	39	37	63	56	71	40	31	26	34

(000's)	J 09	F	M	A	M	J	J	A	S	O	N	D	J 10	F	M	A	M	J	J	A	S	O	N	D	J 11	F	M	A	M	J	J	A	S	O	N	D
Avg Sale Price	589	357	475	532	579	436	532	499	443	434	394	430	420	429	346	430	393	417	430	403	415	431	505	405	406	370	451	347	406	412	437	411	399	332	264	324
3 Mo. Roll Avg			474	455	529	516	516	489	491	459	424	420	415	426	398	402	390	413	413	416	416	416	450	447	439	393	409	389	402	388	418	420	415	380	331	306

Based on information from Midwest Real Estate Data LLC for the period 1/1/2009 through 12/31/2011. Due to MLS reporting methods and allowable reporting policy, this data is only informational and may not be completely accurate. Therefore, Coldwell Banker Residential Brokerage does not guarantee the data accuracy. Data maintained by the MLS's may not reflect all real estate activity in the market.

