

MLS Area: Wilmette



ART WILSON

Broker, Realtor

847-363-1599

www.NorthShoreHomesOnline.com

Art.Wilson@cbexchange.com



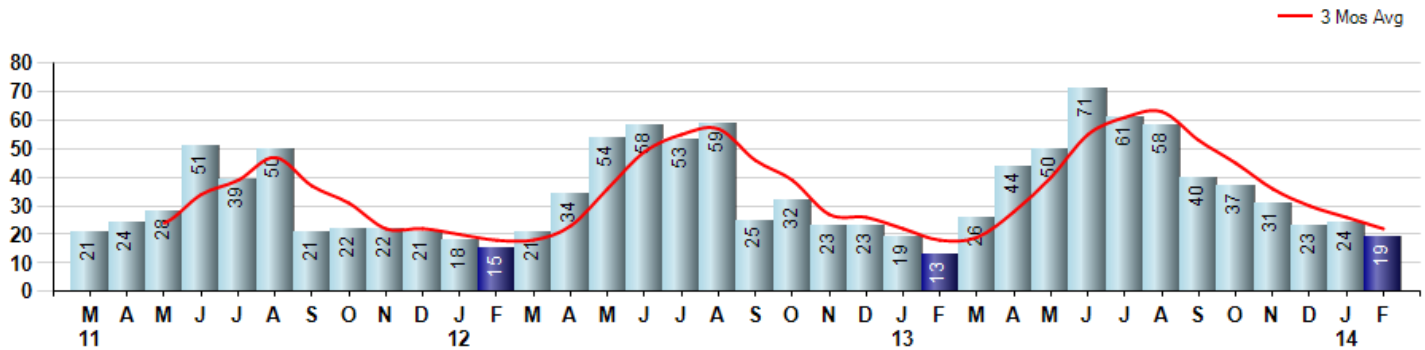
Price Range: \$0 to \$999,999,000 | Properties: Single Family Home, Townhome, Condo

Market Profile & Trends Overview	Month	Trending Versus*:				YTD	Trending Versus*:	
		LM	L3M	PYM	LY		PriorYTD	PriorYear
Median List Price of all Current Listings	\$578,750	↑		↑				
Average List Price of all Current Listings	\$766,731	↔		↑				
February Median Sales Price	\$472,980	↓	↓	↑	↓	\$517,500	↑	↓
February Average Sales Price	\$600,999	↑	↓	↑	↓	\$575,729	↑	↓
Total Properties Currently for Sale (Inventory)	108	↑		↓				
February Number of Properties Sold	19	↓		↑		43	↑	
February Average Days on Market (Solds)	93	↑	↑	↑	↑	73	↓	↑
February Month's Supply of Inventory	5.7	↑	↑	↓	↑	5.0	↓	↑
February Sale Price vs List Price Ratio	96.4%	↑	↑	↑	↑	95.1%	↔	↓

* LM=Last Month / L3M=Last 3 Months / PYM=Same Month Prior Year / LY=Last Year / YTD = Year-to-date

Property Sales

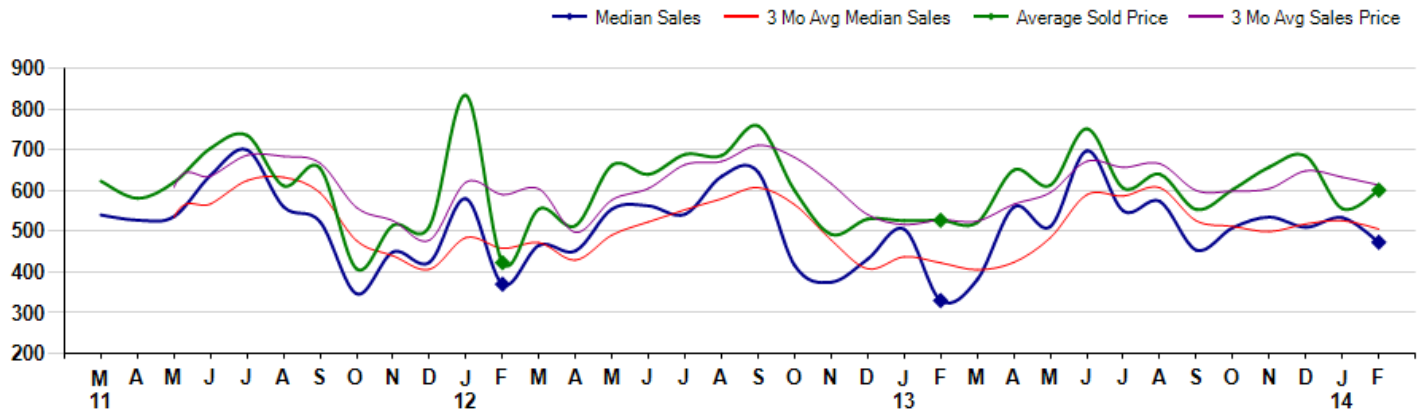
February Property sales were 19, up 46.2% from 13 in February of 2013 and -20.8% lower than the 24 sales last month. February 2014 sales were at their highest level compared to February of 2013 and 2012. February YTD sales of 43 are running 34.4% ahead of last year's year-to-date sales of 32.



Prices

The Median Sales Price in February was \$472,980, up 43.3% from \$330,000 in February of 2013 and down -11.3% from \$533,438 last month. The Average Sales Price in February was \$600,999, up 14.0% from \$527,231 in February of 2013 and up 8.1% from \$555,724 last month. February 2014 ASP was at highest level compared to February of 2013 and 2012.

Median means Middle (the same # of properties sold above and below Median) (000's)



MLS Area: Wilmette



ART WILSON

Broker, Realtor

847-363-1599

www.NorthShoreHomesOnline.com

Art.Wilson@cbexchange.com



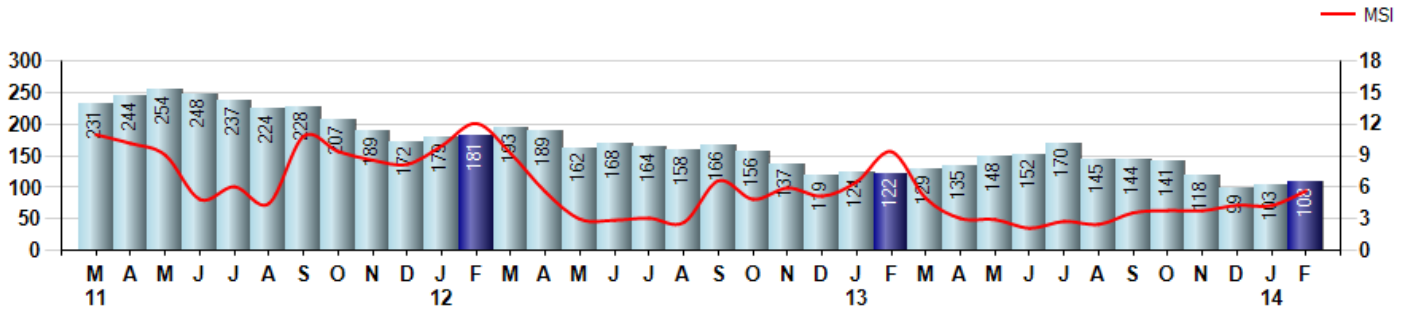
Price Range: \$0 to \$999,999,000 | Properties: Single Family Home, Townhome, Condo

Inventory & MSI

The Total Inventory of Properties available for sale as of February was 108, up 4.9% from 103 last month and down -11.5% from 122 in February of last year. February 2014 Inventory was at the lowest level compared to February of 2013 and 2012.

A comparatively lower MSI is more beneficial for sellers while a higher MSI is better for buyers. The February 2014 MSI of 5.7 months was at its lowest level compared with February of 2013 and 2012.

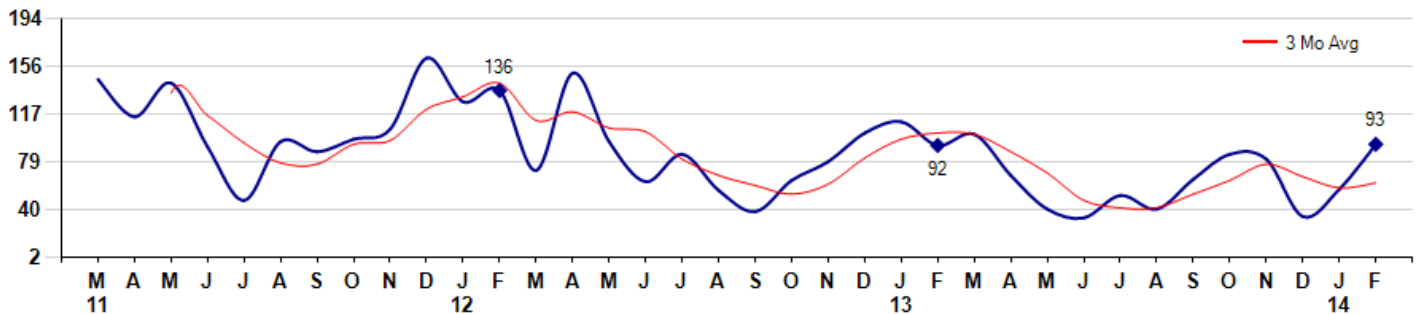
MSI is the # of months needed to sell all of the Inventory at the monthly Sales Pace



Market Time

The average Days On Market(DOM) shows how many days the average Property is on the Market before it sells. An upward trend in DOM tends to indicate a move towards more of a Buyer's market, a downward trend a move towards more of a Seller's market. The DOM for February was 93, up 63.2% from 57 days last month and up 1.1% from 92 days in February of last year. The February 2014 DOM was at a mid range compared with February of 2013 and 2012.

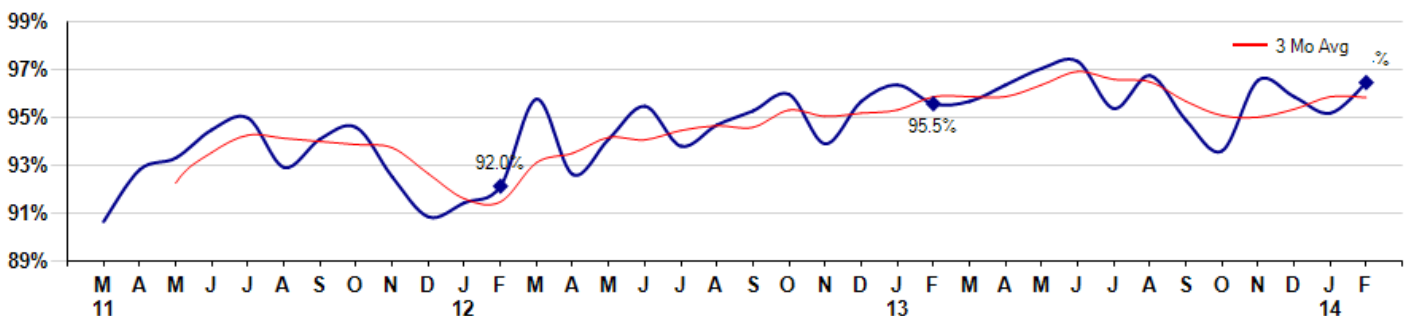
Average Days on Market(Listing to Contract) for properties sold during the month



Selling Price vs Listing Price

The Selling Price vs Listing Price reveals the average amount that Sellers are agreeing to come down from their list price. The lower the ratio is below 100% the more of a Buyer's market exists, a ratio at or above 100% indicates more of a Seller's market. The February 2014 Selling Price vs List Price of 96.4% was up from 95.1% last month and up from 95.5% in February of last year.

Avg Selling Price divided by Avg Listing Price for sold properties during the month



MLS Area: Wilmette



ART WILSON

Broker, Realtor

847-363-1599

www.NorthShoreHomesOnline.com

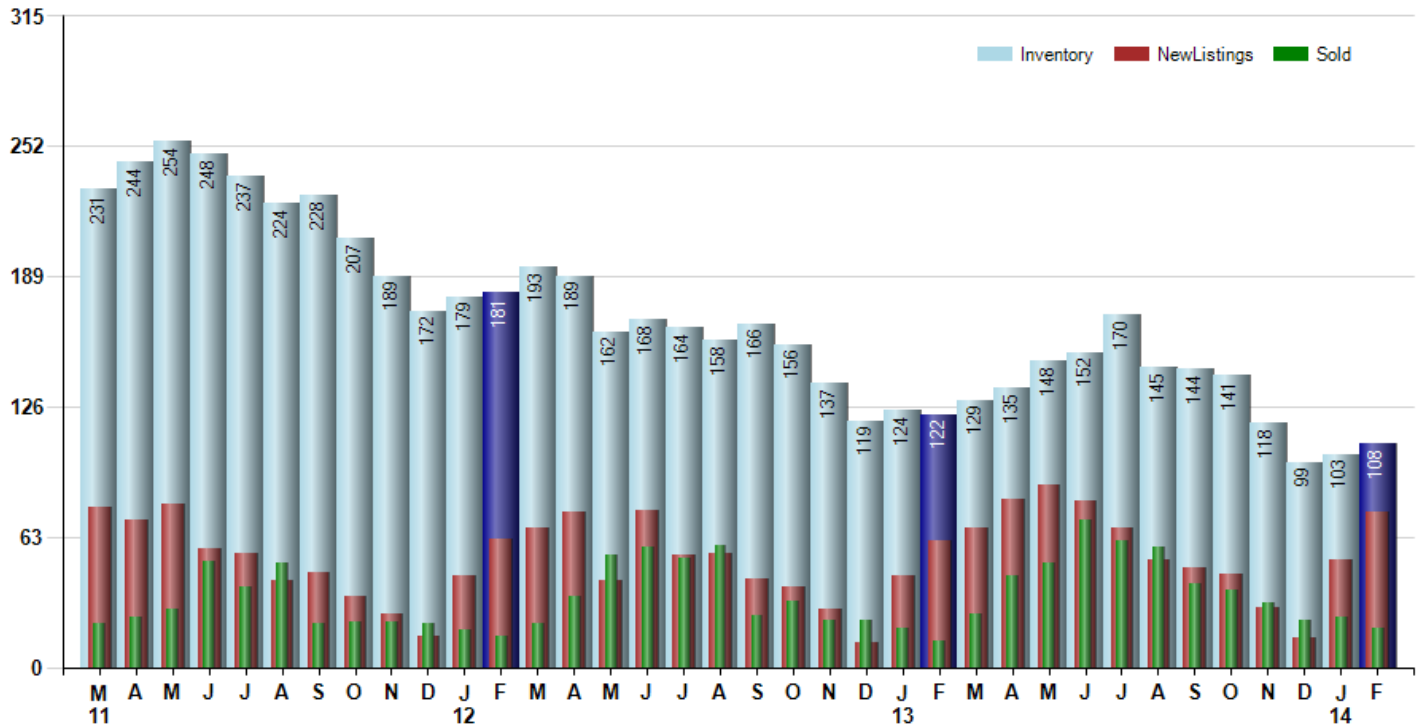
Art.Wilson@cbexchange.com



Price Range: \$0 to \$999,999,000 | Properties: Single Family Home, Townhome, Condo

Inventory / New Listings / Sales

This last view of the market combines monthly inventory of Properties for sale along with New Listings and Sales. The graph shows the basic annual seasonality of the market as well as the relationship between these items. The number of New Listings in February 2014 was 75, up 44.2% from 52 last month and up 23.0% from 61 in February of last year.



© 2014 Coldwell Banker Real Estate LLC. All Rights Reserved. Coldwell Banker Residential Brokerage fully supports the principles of the Fair Housing Act and the Equal Opportunity Act. Coldwell Banker Residential Brokerage is operated by a subsidiary of NRT LLC. Coldwell Banker and the Coldwell Banker Logo are registered service marks owned by Coldwell Banker Real Estate LLC.

Based on information from Midwest Real Estate Data LLC for the period 3/1/2011 through 2/28/2014. Due to MLS reporting methods and allowable reporting policy, this data is only informational and may not be completely accurate. Therefore, Coldwell Banker Residential Brokerage does not guarantee the data accuracy. Data maintained by the MLS's may not reflect all real estate activity in the market.



MARKET ACTION REPORT

February 2014

MLS Area: Wilmette



ART WILSON
 Broker, Realtor
 847-363-1599
 www.NorthShoreHomesOnline.com
 Art.Wilson@cbexchange.com



Price Range: \$0 to \$999,999,000 | Properties: Single Family Home, Townhome, Condo

	M 11	A	M	J	J	A	S	O	N	D	J 12	F	M	A	M	J	J	A	S	O	N	D	J 13	F	M	A	M	J	J	A	S	O	N	D	J 14	F
Homes Sold	21	24	28	51	39	50	21	22	22	21	18	15	21	34	54	58	53	59	25	32	23	23	19	13	26	44	50	71	61	58	40	37	31	23	24	19
3 Mo. Roll Avg			24	34	39	47	37	31	22	22	20	18	18	23	36	49	55	57	46	39	27	26	22	18	19	28	40	55	61	63	53	45	36	30	26	22

	(000's) M 11	A	M	J	J	A	S	O	N	D	J 12	F	M	A	M	J	J	A	S	O	N	D	J 13	F	M	A	M	J	J	A	S	O	N	D	J 14	F
Median Sale Price	540	527	536	638	700	560	524	347	449	424	580	370	466	452	555	563	542	635	645	416	375	432	505	330	381	560	512	698	550	573	454	509	535	510	533	473
3 Mo. Roll Avg			535	567	625	633	595	477	440	407	484	458	472	429	491	523	553	580	607	565	479	408	437	422	405	424	484	590	587	607	526	512	499	518	526	506

	M 11	A	M	J	J	A	S	O	N	D	J 12	F	M	A	M	J	J	A	S	O	N	D	J 13	F	M	A	M	J	J	A	S	O	N	D	J 14	F
Inventory	231	244	254	248	237	224	228	207	189	172	179	181	193	189	162	168	164	158	166	156	137	119	124	122	129	135	148	152	170	145	144	141	118	99	103	108
MSI	11	10	9	5	6	4	11	9	9	8	10	12	9	6	3	3	3	3	7	5	6	5	7	9	5	3	3	2	3	3	4	4	4	4	4	6

	M 11	A	M	J	J	A	S	O	N	D	J 12	F	M	A	M	J	J	A	S	O	N	D	J 13	F	M	A	M	J	J	A	S	O	N	D	J 14	F
Days On Market	145	115	142	91	48	95	87	97	105	162	127	136	72	150	95	63	85	56	39	64	79	102	111	92	101	68	41	34	52	41	65	85	81	35	57	93
3 Mo. Roll Avg			134	116	94	78	77	93	96	121	131	142	112	119	106	103	81	68	60	53	61	82	97	102	101	87	70	48	42	42	53	64	77	67	58	62

	M 11	A	M	J	J	A	S	O	N	D	J 12	F	M	A	M	J	J	A	S	O	N	D	J 13	F	M	A	M	J	J	A	S	O	N	D	J 14	F
Price per Sq Ft	232	245	252	226	242	237	277	188	229	194	247	264	219	216	225	242	242	234	238	263	234	234	235	234	178	239	263	266	248	262	266	254	259	242	248	279
3 Mo. Roll Avg			243	241	240	235	252	234	231	204	223	235	243	233	220	228	236	239	238	245	245	244	234	234	216	217	227	256	259	259	259	261	260	252	250	256

	M 11	A	M	J	J	A	S	O	N	D	J 12	F	M	A	M	J	J	A	S	O	N	D	J 13	F	M	A	M	J	J	A	S	O	N	D	J 14	F
Sale to List Price	0.905	0.927	0.932	0.944	0.949	0.928	0.940	0.945	0.924	0.907	0.913	0.920	0.957	0.925	0.940	0.954	0.937	0.946	0.952	0.959	0.938	0.956	0.963	0.955	0.956	0.963	0.970	0.973	0.953	0.967	0.948	0.935	0.965	0.958	0.951	0.964
3 Mo. Roll Avg			0.921	0.934	0.942	0.940	0.939	0.938	0.936	0.925	0.915	0.913	0.930	0.934	0.941	0.940	0.944	0.946	0.945	0.952	0.950	0.951	0.952	0.958	0.958	0.958	0.963	0.969	0.965	0.964	0.956	0.950	0.949	0.953	0.958	0.958

	M 11	A	M	J	J	A	S	O	N	D	J 12	F	M	A	M	J	J	A	S	O	N	D	J 13	F	M	A	M	J	J	A	S	O	N	D	J 14	F
New Listings	77	71	79	57	55	42	46	34	26	15	44	62	67	75	42	76	54	55	43	39	28	12	44	61	67	81	88	80	67	52	48	45	29	14	52	75
Inventory	231	244	254	248	237	224	228	207	189	172	179	181	193	189	162	168	164	158	166	156	137	119	124	122	129	135	148	152	170	145	144	141	118	99	103	108
Sales	21	24	28	51	39	50	21	22	22	21	18	15	21	34	54	58	53	59	25	32	23	23	19	13	26	44	50	71	61	58	40	37	31	23	24	19

	(000's) M 11	A	M	J	J	A	S	O	N	D	J 12	F	M	A	M	J	J	A	S	O	N	D	J 13	F	M	A	M	J	J	A	S	O	N	D	J 14	F
Avg Sale Price	623	581	620	704	736	612	655	408	515	513	834	423	555	514	663	640	689	686	759	600	493	530	526	527	522	650	613	752	606	640	554	603	658	685	556	601
3 Mo. Roll Avg			608	635	687	684	668	558	526	478	620	590	604	497	577	606	664	672	711	682	617	541	516	528	525	566	595	672	657	666	600	599	605	648	633	614

© 2014 Coldwell Banker Real Estate LLC. All Rights Reserved. Coldwell Banker Residential Brokerage fully supports the principles of the Fair Housing Act and the Equal Opportunity Act. Coldwell Banker Residential Brokerage is operated by a subsidiary of NRT LLC. Coldwell Banker and the Coldwell Banker Logo are registered service marks owned by Coldwell Banker Real Estate LLC.

Based on information from Midwest Real Estate Data LLC for the period 3/1/2011 through 2/28/2014. Due to MLS reporting methods and allowable reporting policy, this data is only informational and may not be completely accurate. Therefore, Coldwell Banker Residential Brokerage does not guarantee the data accuracy. Data maintained by the MLS's may not reflect all real estate activity in the market.

