

MLS Area: Northbrook



ART WILSON

Broker, Realtor

847-363-1599

www.NorthShoreHomesOnline.com

Art.Wilson@cbexchange.com



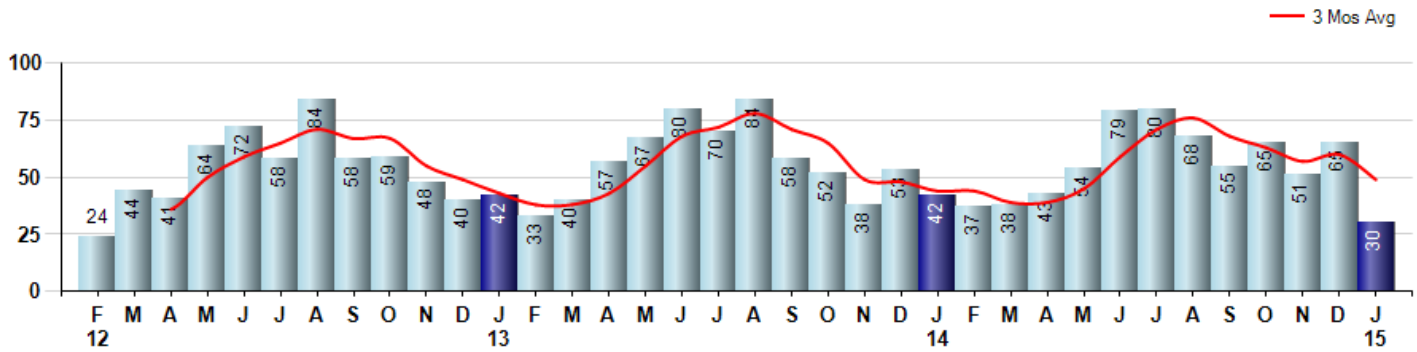
Price Range: \$0 to \$999,999,000 | Properties: Single Family Home, Townhome, Condo

Market Profile & Trends Overview	Month	Trending Versus*:				YTD	Trending Versus*:	
		LM	L3M	PYM	LY		PriorYTD	PriorYear
Median List Price of all Current Listings	\$549,000	↑		↑				
Average List Price of all Current Listings	\$712,874	↑		↑				
January Median Sales Price	\$520,000	↑	↑	↑	↑	\$520,000	↑	↑
January Average Sales Price	\$519,903	↑	↑	↑	↑	\$519,903	↑	↑
Total Properties Currently for Sale (Inventory)	181	↓		↑				
January Number of Properties Sold	30	↓		↓		30	↔	
January Average Days on Market (Solds)	58	↑	↑	↓	↑	58	↓	↑
January Month's Supply of Inventory	6.0	↑	↑	↑	↑	6.0	↑	↑
January Sale Price vs List Price Ratio	96.3%	↑	↔	↔	↑	95.8%	↓	↔

* LM=Last Month / L3M=Last 3 Months / PYM=Same Month Prior Year / LY=Last Year / YTD = Year-to-date

Property Sales

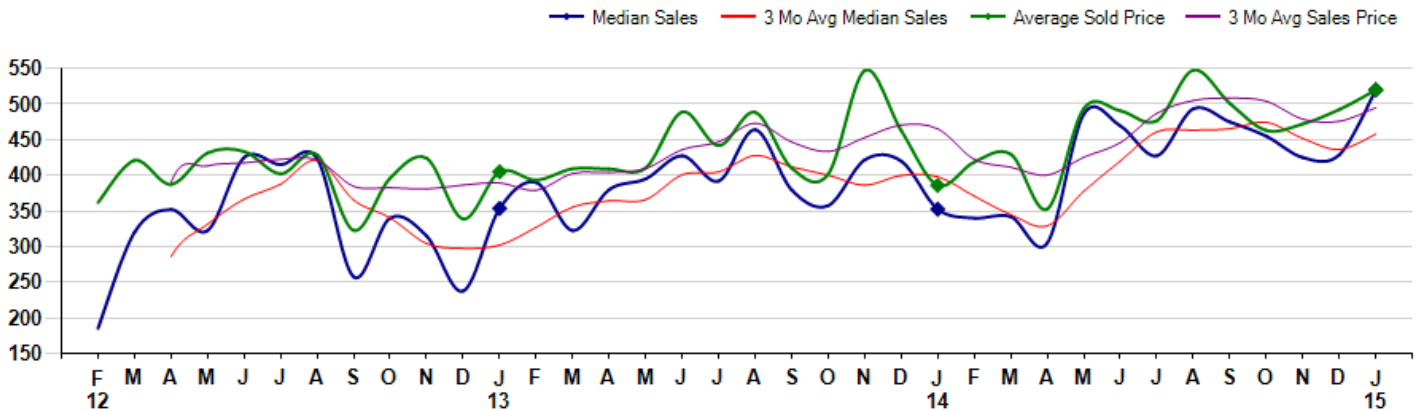
January Property sales were 30, down -28.6% from 42 in January of 2014 and -53.8% lower than the 65 sales last month. January 2015 sales were at their lowest level compared to January of 2014 and 2013. January YTD sales of 30 are running -28.6% behind last year's year-to-date sales of 42.



Prices

The Median Sales Price in January was \$520,000, up 47.5% from \$352,500 in January of 2014 and up 21.2% from \$429,000 last month. The Average Sales Price in January was \$519,903, up 34.7% from \$385,884 in January of 2014 and up 5.6% from \$492,399 last month. January 2015 ASP was at highest level compared to January of 2014 and 2013.

Median means Middle (the same # of properties sold above and below Median) (000's)



MLS Area: Northbrook



ART WILSON

Broker, Realtor

847-363-1599

www.NorthShoreHomesOnline.com

Art.Wilson@cbexchange.com



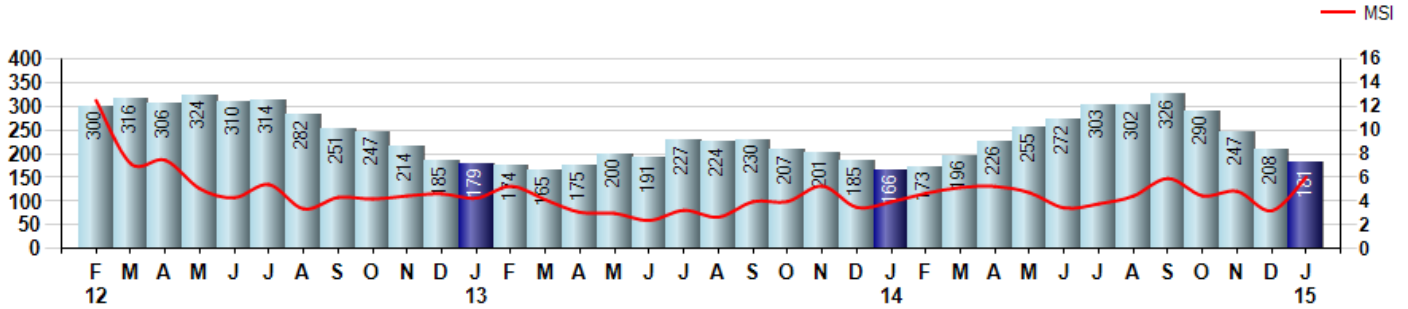
Price Range: \$0 to \$999,999,000 | Properties: Single Family Home, Townhome, Condo

Inventory & MSI

The Total Inventory of Properties available for sale as of January was 181, down -13.0% from 208 last month and up 9.0% from 166 in January of last year. January 2015 Inventory was at highest level compared to January of 2014 and 2013.

A comparatively lower MSI is more beneficial for sellers while a higher MSI is better for buyers. The January 2015 MSI of 6.0 months was at its highest level compared with January of 2014 and 2013.

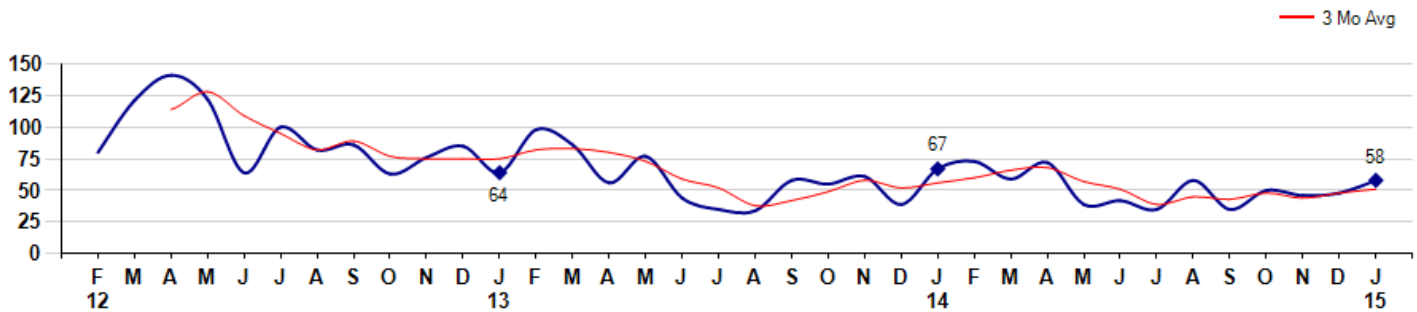
MSI is the # of months needed to sell all of the Inventory at the monthly Sales Pace



Market Time

The average Days On Market(DOM) shows how many days the average Property is on the Market before it sells. An upward trend in DOM tends to indicate a move towards more of a Buyer's market, a downward trend a move towards more of a Seller's market. The DOM for January was 58, up 20.8% from 48 days last month and down -13.4% from 67 days in January of last year. The January 2015 DOM was at its lowest level compared with January of 2014 and 2013.

Average Days on Market(Listing to Contract) for properties sold during the month



MLS Area: Northbrook



ART WILSON
 Broker, Realtor
 847-363-1599
 www.NorthShoreHomesOnline.com
 Art.Wilson@cbexchange.com

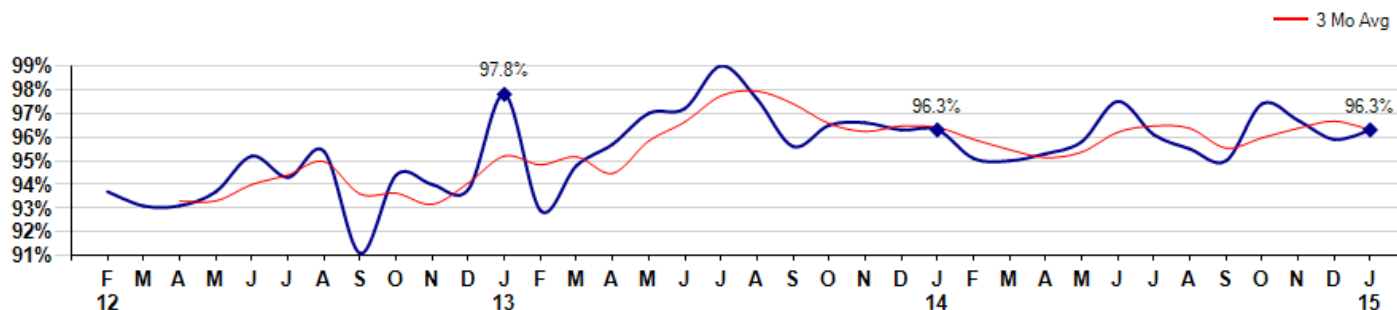


Price Range: \$0 to \$999,999,000 | Properties: Single Family Home, Townhome, Condo

Selling Price vs Listing Price

The Selling Price vs Listing Price reveals the average amount that Sellers are agreeing to come down from their list price. The lower the ratio is below 100% the more of a Buyer's market exists, a ratio at or above 100% indicates more of a Seller's market. The January 2015 Selling Price vs List Price of 96.3% was up from 95.9% last month and equal to 96.3% in January of last year.

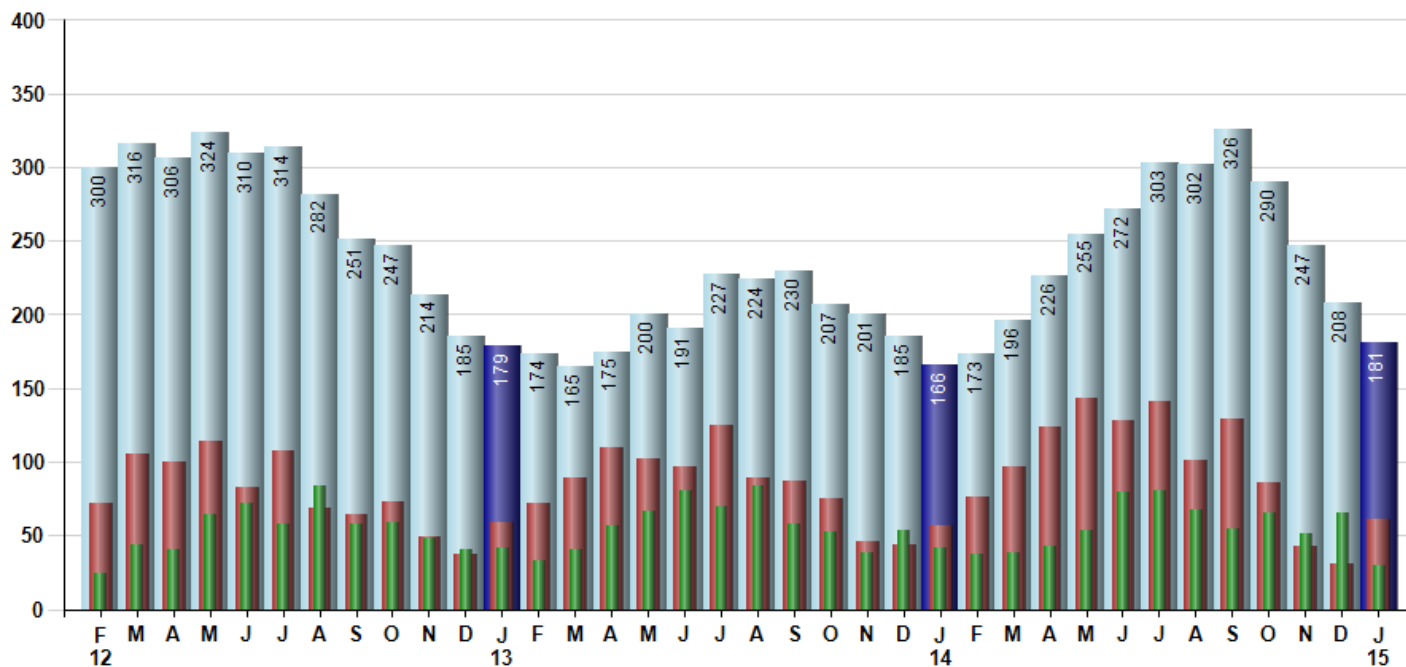
Avg Selling Price divided by Avg Listing Price for sold properties during the month



Inventory / New Listings / Sales

This last view of the market combines monthly inventory of Properties for sale along with New Listings and Sales. The graph shows the basic annual seasonality of the market as well as the relationship between these items. The number of New Listings in January 2015 was 61, up 96.8% from 31 last month and up 7.0% from 57 in January of last year.

Inventory New Listings Sold



© 2015 Coldwell Banker Real Estate LLC. All Rights Reserved. Coldwell Banker Residential Brokerage fully supports the principles of the Fair Housing Act and the Equal Opportunity Act. Coldwell Banker Residential Brokerage is operated by a subsidiary of NRT LLC. Coldwell Banker and the Coldwell Banker Logo are registered service marks owned by Coldwell Banker Real Estate LLC.

Based on information from Midwest Real Estate Data LLC for the period 2/1/2012 through 1/31/2015. Due to MLS reporting methods and allowable reporting policy, this data is only informational and may not be completely accurate. Therefore, Coldwell Banker Residential Brokerage does not guarantee the data accuracy. Data maintained by the MLS's may not reflect all real estate activity in the market.



MLS Area: Northbrook



ART WILSON
 Broker, Realtor
 847-363-1599
 www.NorthShoreHomesOnline.com
 Art.Wilson@cbexchange.com



Price Range: \$0 to \$999,999,000 | Properties: Single Family Home, Townhome, Condo

	F 12	M	A	M	J	J	A	S	O	N	D	J 13	F	M	A	M	J	J	A	S	O	N	D	J 14	F	M	A	M	J	J	A	S	O	N	D	J 15
Homes Sold	24	44	41	64	72	58	84	58	59	48	40	42	33	40	57	67	80	70	84	58	52	38	53	42	37	38	43	54	79	80	68	55	65	51	65	30
3 Mo. Roll Avg			36	50	59	65	71	67	67	55	49	43	38	38	43	55	68	72	78	71	65	49	48	44	44	39	39	45	59	71	76	68	63	57	60	49

	(000's) F 12	M	A	M	J	J	A	S	O	N	D	J 13	F	M	A	M	J	J	A	S	O	N	D	J 14	F	M	A	M	J	J	A	S	O	N	D	J 15
Median Sale Price	185	320	352	323	425	415	424	258	340	315	238	354	390	323	380	395	428	392	464	380	358	422	420	353	340	342	305	486	470	428	494	475	455	425	429	520
3 Mo. Roll Avg			286	332	366	387	421	365	340	304	298	302	327	355	364	366	401	405	428	412	400	386	400	398	371	345	329	378	420	461	464	465	475	452	436	458

	F 12	M	A	M	J	J	A	S	O	N	D	J 13	F	M	A	M	J	J	A	S	O	N	D	J 14	F	M	A	M	J	J	A	S	O	N	D	J 15
Inventory	300	316	306	324	310	314	282	251	247	214	185	179	174	165	175	200	191	227	224	230	207	201	185	166	173	196	226	255	272	303	302	326	290	247	208	181
MSI	13	7	7	5	4	5	3	4	4	4	5	4	5	4	3	3	2	3	3	4	4	5	3	4	5	5	5	5	3	4	4	6	4	5	3	6

	F 12	M	A	M	J	J	A	S	O	N	D	J 13	F	M	A	M	J	J	A	S	O	N	D	J 14	F	M	A	M	J	J	A	S	O	N	D	J 15
Days On Market	80	121	141	122	64	100	82	86	63	76	85	64	98	86	56	77	44	35	34	58	55	61	39	67	73	59	72	39	42	35	58	35	50	46	48	58
3 Mo. Roll Avg			114	128	109	95	82	89	77	75	75	82	83	80	73	59	52	38	42	49	58	52	56	60	66	68	57	51	39	45	43	48	44	48	51	

	F 12	M	A	M	J	J	A	S	O	N	D	J 13	F	M	A	M	J	J	A	S	O	N	D	J 14	F	M	A	M	J	J	A	S	O	N	D	J 15
Price per Sq Ft	140	178	159	160	180	172	177	151	167	173	144	176	158	172	186	207	198	186	187	188	182	182	179	184	180	208	192	206	226	210	210	210	194	200	204	204
3 Mo. Roll Avg			159	166	166	171	176	167	165	164	161	164	159	169	172	188	197	197	190	187	186	184	181	182	181	191	193	202	208	214	215	210	205	201	199	203

	F 12	M	A	M	J	J	A	S	O	N	D	J 13	F	M	A	M	J	J	A	S	O	N	D	J 14	F	M	A	M	J	J	A	S	O	N	D	J 15
Sale to List Price	0.937	0.931	0.931	0.937	0.952	0.943	0.954	0.911	0.944	0.940	0.938	0.978	0.929	0.948	0.957	0.970	0.972	0.990	0.976	0.956	0.965	0.966	0.963	0.963	0.951	0.950	0.953	0.958	0.975	0.961	0.955	0.950	0.974	0.967	0.959	0.963
3 Mo. Roll Avg			0.933	0.933	0.940	0.944	0.950	0.936	0.936	0.932	0.941	0.952	0.948	0.952	0.945	0.958	0.966	0.977	0.979	0.974	0.966	0.962	0.965	0.964	0.959	0.955	0.951	0.954	0.962	0.965	0.964	0.955	0.960	0.964	0.967	0.963

	F 12	M	A	M	J	J	A	S	O	N	D	J 13	F	M	A	M	J	J	A	S	O	N	D	J 14	F	M	A	M	J	J	A	S	O	N	D	J 15
New Listings	72	105	100	114	83	108	69	64	73	49	37	59	72	89	110	102	97	125	89	87	75	46	44	57	76	97	124	143	128	141	101	129	86	43	31	61
Inventory	300	316	306	324	310	314	282	251	247	214	185	179	174	165	175	200	191	227	224	230	207	201	185	166	173	196	226	255	272	303	302	326	290	247	208	181
Sales	24	44	41	64	72	58	84	58	59	48	40	42	33	40	57	67	80	70	84	58	52	38	53	42	37	38	43	54	79	80	68	55	65	51	65	30

	(000's) F 12	M	A	M	J	J	A	S	O	N	D	J 13	F	M	A	M	J	J	A	S	O	N	D	J 14	F	M	A	M	J	J	A	S	O	N	D	J 15
Avg Sale Price	362	421	387	431	434	402	429	323	396	424	339	405	393	409	409	410	489	442	489	410	402	547	463	386	419	430	353	494	491	477	548	501	463	472	492	520
3 Mo. Roll Avg			390	413	417	422	422	385	383	381	386	389	379	403	404	410	436	447	473	447	433	453	471	465	422	411	400	425	446	487	505	508	504	479	476	495

© 2015 Coldwell Banker Real Estate LLC. All Rights Reserved. Coldwell Banker Residential Brokerage fully supports the principles of the Fair Housing Act and the Equal Opportunity Act. Coldwell Banker Residential Brokerage is operated by a subsidiary of NRT LLC. Coldwell Banker and the Coldwell Banker Logo are registered service marks owned by Coldwell Banker Real Estate LLC.

Based on information from Midwest Real Estate Data LLC for the period 2/1/2012 through 1/31/2015. Due to MLS reporting methods and allowable reporting policy, this data is only informational and may not be completely accurate. Therefore, Coldwell Banker Residential Brokerage does not guarantee the data accuracy. Data maintained by the MLS's may not reflect all real estate activity in the market.

