

## MLS Area: Lake Forest



**ART WILSON**  
 Broker, Realtor  
 847-363-1599  
 www.NorthShoreHomesOnline.com  
 Art.Wilson@cbexchange.com



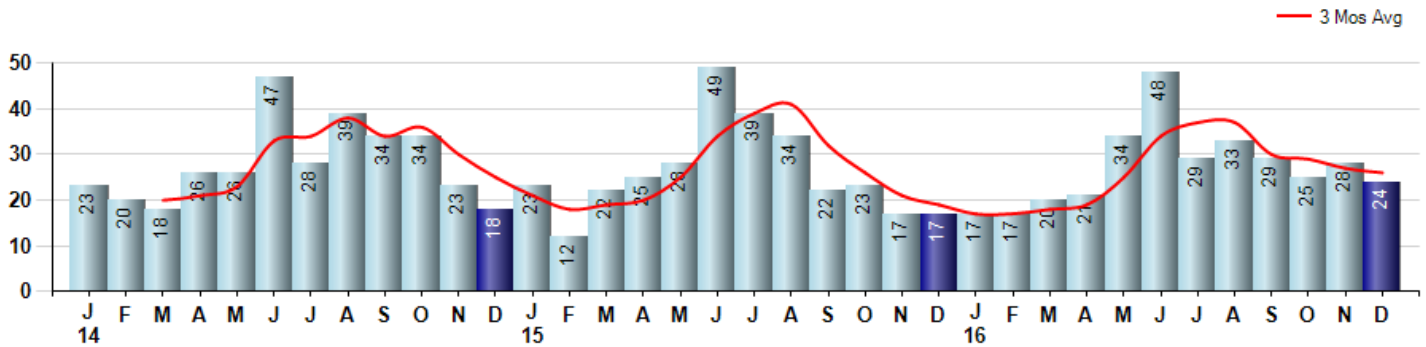
Price Range: \$0 to \$999,999,000 | Properties: Single Family Home, Townhome, Condo

Market Profile & Trends Overview	Month	Trending Versus*:				YTD	Trending Versus*:	
		LM	L3M	PYM	LY		PriorYTD	PriorYear
Median List Price of all Current Listings	\$1,249,450	↔		↑				
Average List Price of all Current Listings	\$1,677,768	↑		↔				
December Median Sales Price	\$737,500	↑	↑	↓	↓	\$730,000	↓	↓
December Average Sales Price	\$871,152	↑	↓	↓	↓	\$891,348	↓	↓
Total Properties Currently for Sale (Inventory)	268	↓		↓				
December Number of Properties Sold	24	↓		↑		325	↑	
December Average Days on Market (Solds)	145	↑	↑	↑	↑	104	↑	↑
December Month's Supply of Inventory	11.2	↓	↓	↓	↓	13.7	↑	↑
December Sale Price vs List Price Ratio	94.1%	↑	↑	↑	↑	92.6%	↔	↔

\* LM=Last Month / L3M=Last 3 Months / PYM=Same Month Prior Year / LY=Last Year / YTD = Year-to-date

### Property Sales

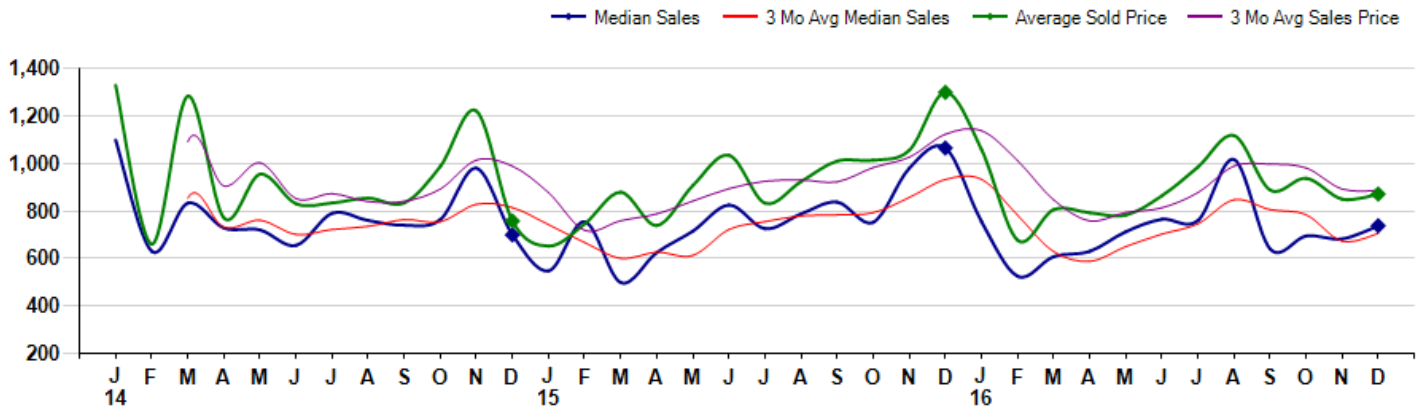
December Property sales were 24, up 41.2% from 17 in December of 2015 and -14.3% lower than the 28 sales last month. December 2016 sales were at their highest level compared to December of 2015 and 2014. December YTD sales of 325 are running 4.5% ahead of last year's year-to-date sales of 311.



### Prices

The Median Sales Price in December was \$737,500, down -30.8% from \$1,065,000 in December of 2015 and up 8.1% from \$682,500 last month. The Average Sales Price in December was \$871,152, down -33.0% from \$1,299,574 in December of 2015 and up 2.5% from \$849,802 last month. December 2016 ASP was at a mid range compared to December of 2015 and 2014.

Median means Middle (the same # of properties sold above and below Median) (000's)



## MLS Area: Lake Forest



**ART WILSON**

Broker, Realtor

847-363-1599

[www.NorthShoreHomesOnline.com](http://www.NorthShoreHomesOnline.com)

[Art.Wilson@cbexchange.com](mailto:Art.Wilson@cbexchange.com)



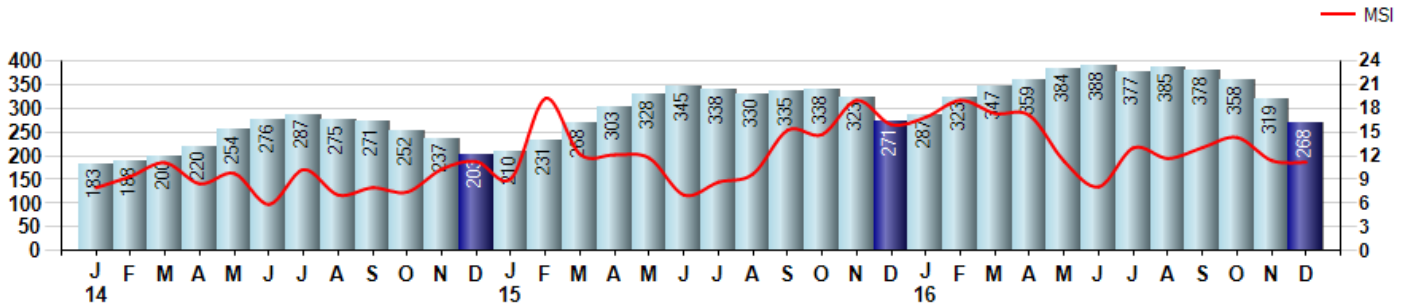
Price Range: \$0 to \$999,999,000 | Properties: Single Family Home, Townhome, Condo

### Inventory & MSI

The Total Inventory of Properties available for sale as of December was 268, down -16.0% from 319 last month and down -1.1% from 271 in December of last year. December 2016 Inventory was at a mid range compared to December of 2015 and 2014.

A comparatively lower MSI is more beneficial for sellers while a higher MSI is better for buyers. The December 2016 MSI of 11.2 months was at its lowest level compared with December of 2015 and 2014.

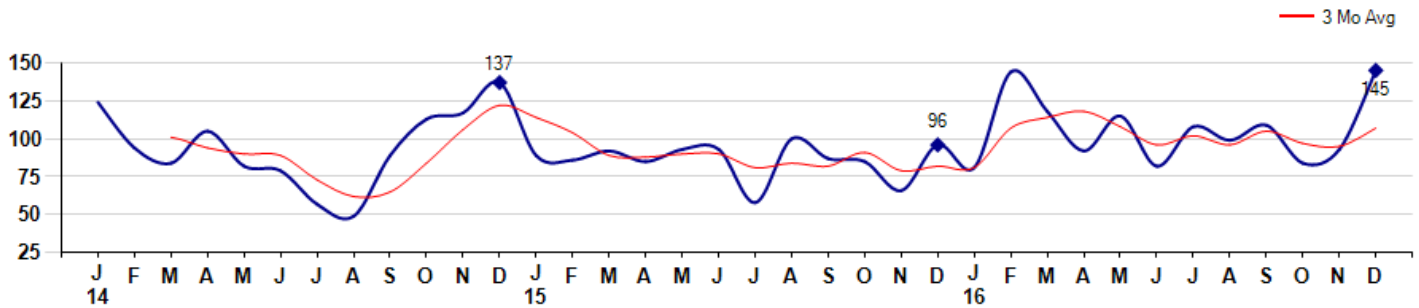
MSI is the # of months needed to sell all of the Inventory at the monthly Sales Pace



### Market Time

The average Days On Market(DOM) shows how many days the average Property is on the Market before it sells. An upward trend in DOM tends to indicate a move towards more of a Buyer's market, a downward trend a move towards more of a Seller's market. The DOM for December was 145, up 55.9% from 93 days last month and up 51.0% from 96 days in December of last year. The December 2016 DOM was at its highest level compared with December of 2015 and 2014.

Average Days on Market(Listing to Contract) for properties sold during the month



## MLS Area: Lake Forest



**ART WILSON**  
 Broker, Realtor  
 847-363-1599  
 www.NorthShoreHomesOnline.com  
 Art.Wilson@cbexchange.com

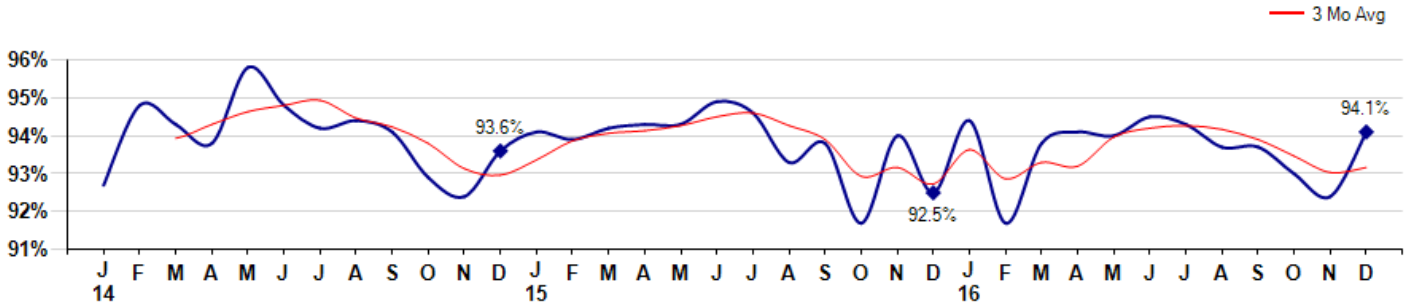


Price Range: \$0 to \$999,999,000 | Properties: Single Family Home, Townhome, Condo

### Selling Price vs Listing Price

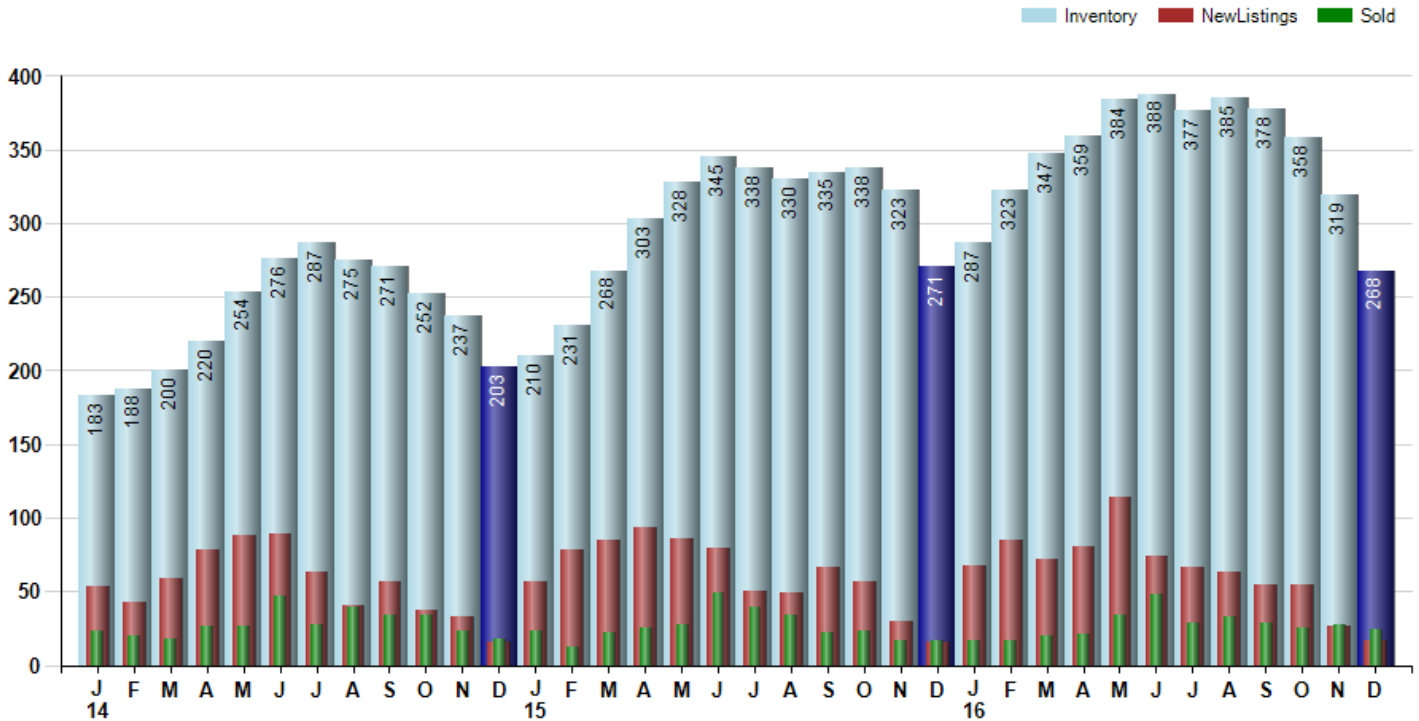
The Selling Price vs Listing Price reveals the average amount that Sellers are agreeing to come down from their list price. The lower the ratio is below 100% the more of a Buyer's market exists, a ratio at or above 100% indicates more of a Seller's market. The December 2016 Selling Price vs List Price of 94.1% was up from 92.4% last month and up from 92.5% in December of last year.

Avg Selling Price divided by Avg Listing Price for sold properties during the month



### Inventory / New Listings / Sales

This last view of the market combines monthly inventory of Properties for sale along with New Listings and Sales. The graph shows the basic annual seasonality of the market as well as the relationship between these items. The number of New Listings in December 2016 was 17, down -34.6% from 26 last month and up 6.3% from 16 in December of last year.



© 2017 Coldwell Banker Real Estate LLC. All Rights Reserved. Coldwell Banker Residential Brokerage fully supports the principles of the Fair Housing Act and the Equal Opportunity Act. Coldwell Banker Residential Brokerage is operated by a subsidiary of NRT LLC. Coldwell Banker and the Coldwell Banker Logo are registered service marks owned by Coldwell Banker Real Estate LLC.

Based on information from Midwest Real Estate Data LLC for the period 1/1/2014 through 12/31/2016. Due to MLS reporting methods and allowable reporting policy, this data is only informational and may not be completely accurate. Therefore, Coldwell Banker Residential Brokerage does not guarantee the data accuracy. Data maintained by the MLS's may not reflect all real estate activity in the market.



## MLS Area: Lake Forest



**ART WILSON**  
 Broker, Realtor  
 847-363-1599  
 www.NorthShoreHomesOnline.com  
 Art.Wilson@cbexchange.com



Price Range: \$0 to \$999,999,000 | Properties: Single Family Home, Townhome, Condo

	J 14	F	M	A	M	J	J	A	S	O	N	D	J 15	F	M	A	M	J	J	A	S	O	N	D	J 16	F	M	A	M	J	J	A	S	O	N	D
Homes Sold	23	20	18	26	26	47	28	39	34	34	23	18	23	12	22	25	28	49	39	34	22	23	17	17	17	17	20	21	34	48	29	33	29	25	28	24
3 Mo. Roll Avg			20	21	23	33	34	38	34	36	30	25	21	18	19	20	25	34	39	41	32	26	21	19	17	17	18	19	25	34	37	37	30	29	27	26

(000's)	J 14	F	M	A	M	J	J	A	S	O	N	D	J 15	F	M	A	M	J	J	A	S	O	N	D	J 16	F	M	A	M	J	J	A	S	O	N	D
Median Sale Price	1,099	630	833	729	720	655	790	760	740	764	980	699	548	755	499	625	715	825	725	788	838	753	980	1,065	755	525	608	630	713	765	760	1,017	640	695	683	738
3 Mo. Roll Avg			854	731	761	701	722	735	763	755	828	814	742	667	600	626	613	722	755	779	783	793	857	933	933	782	629	588	650	703	746	847	806	784	673	705

	J 14	F	M	A	M	J	J	A	S	O	N	D	J 15	F	M	A	M	J	J	A	S	O	N	D	J 16	F	M	A	M	J	J	A	S	O	N	D
Inventory	183	188	200	220	254	276	287	275	271	252	237	203	210	231	268	303	328	345	338	330	335	338	323	271	287	323	347	359	384	388	377	385	378	358	319	268
MSI	8	9	11	8	10	6	10	7	8	7	10	11	9	19	12	12	12	7	9	10	15	15	19	16	17	19	17	17	11	8	13	12	13	14	11	11

	J 14	F	M	A	M	J	J	A	S	O	N	D	J 15	F	M	A	M	J	J	A	S	O	N	D	J 16	F	M	A	M	J	J	A	S	O	N	D
Days On Market	124	94	84	105	82	79	57	49	89	113	117	137	89	86	92	85	93	93	58	100	87	85	66	96	81	144	118	92	115	82	108	99	109	84	93	145
3 Mo. Roll Avg			101	94	90	89	73	62	65	84	106	122	114	104	89	88	90	90	81	84	82	91	79	82	81	107	114	118	108	96	102	96	105	97	95	107

	J 14	F	M	A	M	J	J	A	S	O	N	D	J 15	F	M	A	M	J	J	A	S	O	N	D	J 16	F	M	A	M	J	J	A	S	O	N	D
Price per Sq Ft	288	229	285	241	288	256	258	262	275	272	275	266	223	228	242	242	273	278	265	251	246	272	275	292	287	236	270	240	241	255	277	276	241	238	241	241
3 Mo. Roll Avg			267	252	271	262	267	259	265	270	274	271	255	239	231	237	252	264	272	265	254	256	264	280	285	272	264	249	250	245	258	269	265	252	240	240

	J 14	F	M	A	M	J	J	A	S	O	N	D	J 15	F	M	A	M	J	J	A	S	O	N	D	J 16	F	M	A	M	J	J	A	S	O	N	D
Sale to List Price	0.927	0.948	0.943	0.938	0.958	0.948	0.942	0.944	0.941	0.929	0.924	0.936	0.941	0.939	0.942	0.943	0.943	0.949	0.946	0.933	0.938	0.917	0.940	0.925	0.944	0.917	0.938	0.941	0.940	0.945	0.943	0.937	0.937	0.930	0.924	0.941
3 Mo. Roll Avg			0.939	0.943	0.946	0.948	0.949	0.945	0.942	0.938	0.931	0.930	0.934	0.939	0.941	0.941	0.943	0.945	0.946	0.943	0.939	0.929	0.932	0.927	0.936	0.929	0.933	0.932	0.940	0.942	0.943	0.942	0.939	0.935	0.930	0.932

	J 14	F	M	A	M	J	J	A	S	O	N	D	J 15	F	M	A	M	J	J	A	S	O	N	D	J 16	F	M	A	M	J	J	A	S	O	N	D
New Listings	53	43	59	78	88	89	63	40	57	37	33	16	57	78	85	93	86	79	50	49	67	57	30	16	68	85	72	81	114	74	66	63	55	55	26	17
Inventory	183	188	200	220	254	276	287	275	271	252	237	203	210	231	268	303	328	345	338	330	335	338	323	271	287	323	347	359	384	388	377	385	378	358	319	268
Sales	23	20	18	26	26	47	28	39	34	34	23	18	23	12	22	25	28	49	39	34	22	23	17	17	17	20	21	34	48	29	33	29	25	28	24	

(000's)	J 14	F	M	A	M	J	J	A	S	O	N	D	J 15	F	M	A	M	J	J	A	S	O	N	D	J 16	F	M	A	M	J	J	A	S	O	N	D
Avg Sale Price	1,330	660	1,284	771	954	830	834	854	834	988	1,221	757	652	745	879	739	907	1,035	833	924	1,010	1,014	1,056	1,300	1,059	677	806	792	783	864	985	1,118	888	938	850	871
3 Mo. Roll Avg			1,091	905	1,003	852	873	839	841	892	1,014	989	877	718	759	788	842	894	925	931	922	983	1,026	1,123	1,138	1,012	847	758	793	813	877	989	997	981	892	886

© 2017 Coldwell Banker Real Estate LLC. All Rights Reserved. Coldwell Banker Residential Brokerage fully supports the principles of the Fair Housing Act and the Equal Opportunity Act. Coldwell Banker Residential Brokerage is operated by a subsidiary of NRT LLC. Coldwell Banker and the Coldwell Banker Logo are registered service marks owned by Coldwell Banker Real Estate LLC.

Based on information from Midwest Real Estate Data LLC for the period 1/1/2014 through 12/31/2016. Due to MLS reporting methods and allowable reporting policy, this data is only informational and may not be completely accurate. Therefore, Coldwell Banker Residential Brokerage does not guarantee the data accuracy. Data maintained by the MLS's may not reflect all real estate activity in the market.

