

## MLS Area: Lincolnshire



**ART WILSON**  
Broker, Realtor  
847-363-1599  
Art.Wilson@cbexchange.com



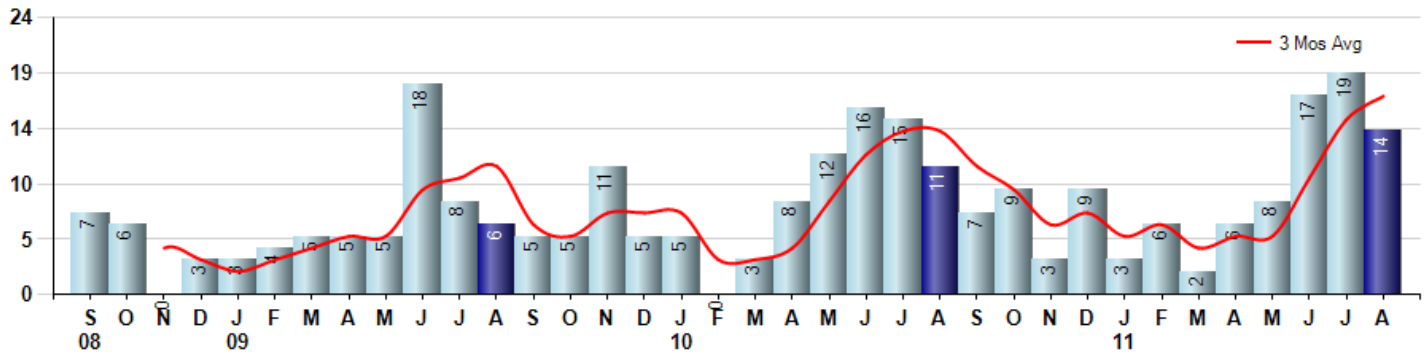
Price Range: ALL | Properties: Single Family Home, Townhome, Condo

Market Profile & Trends Overview	Month	Trending Versus*:				YTD	Trending Versus*:	
		LM	L3M	PYM	LY		PriorYTD	PriorYear
Median List Price of all Current Listings	\$537,000	↑		↑				
Average List Price of all Current Listings	\$615,571	↑		↓				
August Median Sales Price	\$269,000	↓	↓	↓	↓	\$440,000	↓	↑
August Average Sales Price	\$378,393	↓	↓	↓	↓	\$488,125	↓	↑
Total Properties Currently for Sale (Inventory)	106	↓		↓				
August Number of Properties Sold	14	↓		↑		75	↑	
August Average Days on Market (Solds)	90	↓	↓	↓	↓	148	↑	↑
August Month's Supply of Inventory	7.6	↑	↑	↓	↓	22.0	↑	↑
August Sale Price vs List Price Ratio	87.6%	↑	↑	↑	↑	84.3%	↓	↓

\* LM=Last Month / L3M=Last 3 Months / PYM=Same Month Prior Year / LY=Last Year / YTD = Year-to-date

### Property Sales

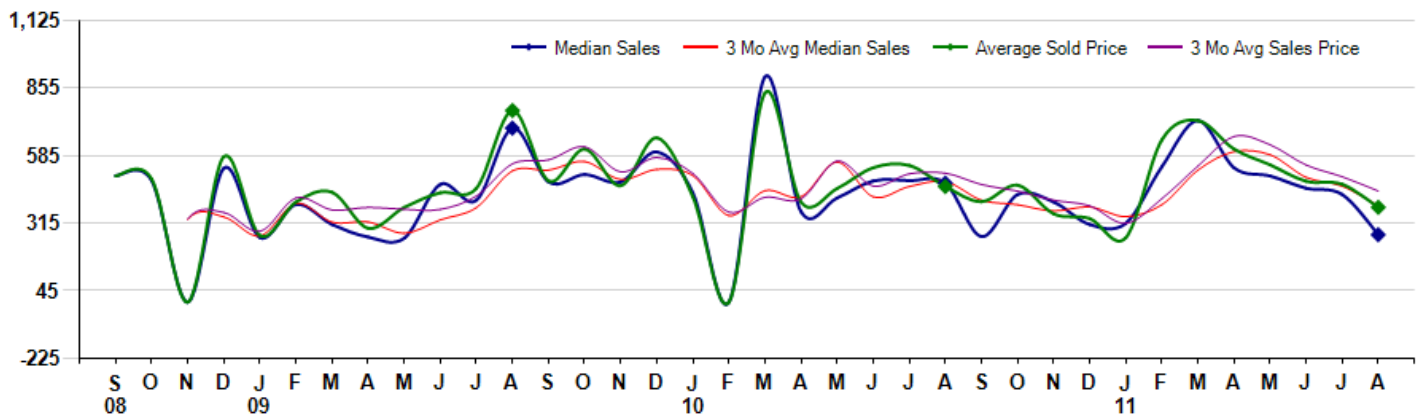
August Property sales were 14, up 27.3% from 11 in August of 2010 and -26.3% lower than the 19 sales last month. August 2011 sales were at their highest level compared to August of 2010 and 2009. August YTD sales of 75 are running 7.1% ahead of last year's year-to-date sales of 70.



### Prices

The Median Sales Price in August was \$269,000, down -43.4% from \$475,000 in August of 2010 and down -37.4% from \$430,000 last month. The Average Sales Price in August was \$378,393, down -18.0% from \$461,523 in August of 2010 and down -19.6% from \$470,684 last month. August 2011 ASP was at the lowest level compared to August of 2010 and 2009.

Median means Middle (the same # of properties sold above and below Median) (000's)



## MLS Area: Lincolnshire

Price Range: ALL | Properties: Single Family Home, Townhome, Condo



**ART WILSON**  
Broker, Realtor  
847-363-1599  
Art.Wilson@cbexchange.com

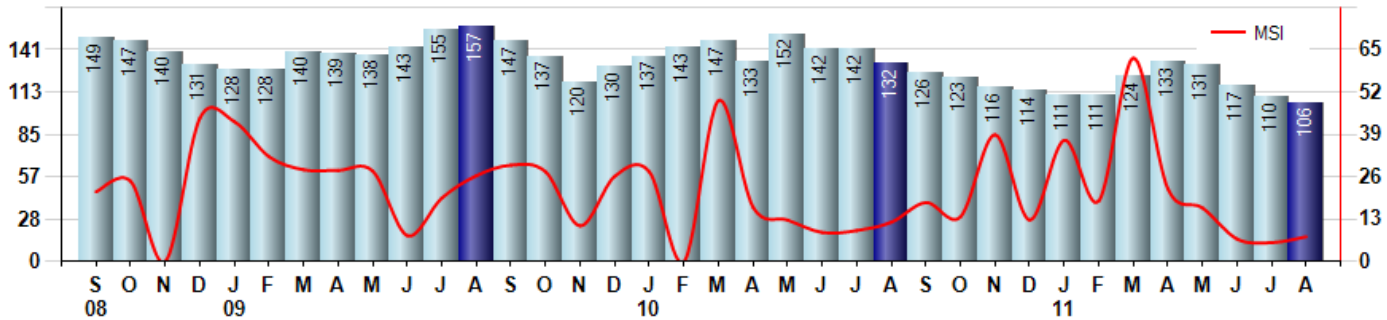


### Inventory & MSI

The Total Inventory of Properties available for sale as of August was 106, down -3.6% from 110 last month and down -19.7% from 132 in August of last year. August 2011 Inventory was at the lowest level compared to August of 2010 and 2009.

A comparatively lower MSI is more beneficial for sellers while a higher MSI is better for buyers. The August 2011 MSI of 7.6 months was at its lowest level compared with August of 2010 and 2009.

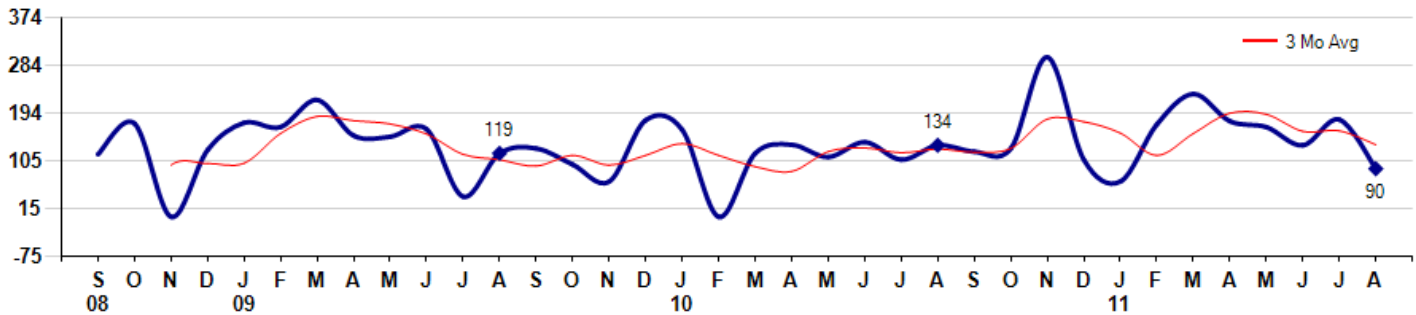
MSI is the # of months needed to sell all of the Inventory at the monthly Sales Pace



### Market Time

The average Days On Market (DOM) shows how many days the average Property is on the Market before it sells. An upward trend in DOM tends to indicate a move towards more of a Buyer's market, a downward trend a move towards more of a Seller's market. The DOM for August was 90, down -50.5% from 182 days last month and down -32.8% from 134 days in August of last year. The August 2011 DOM was at its lowest level compared with August of 2010 and 2009.

Average Days on Market (Listing to Contract) for properties sold during the month



## MLS Area: Lincolnshire



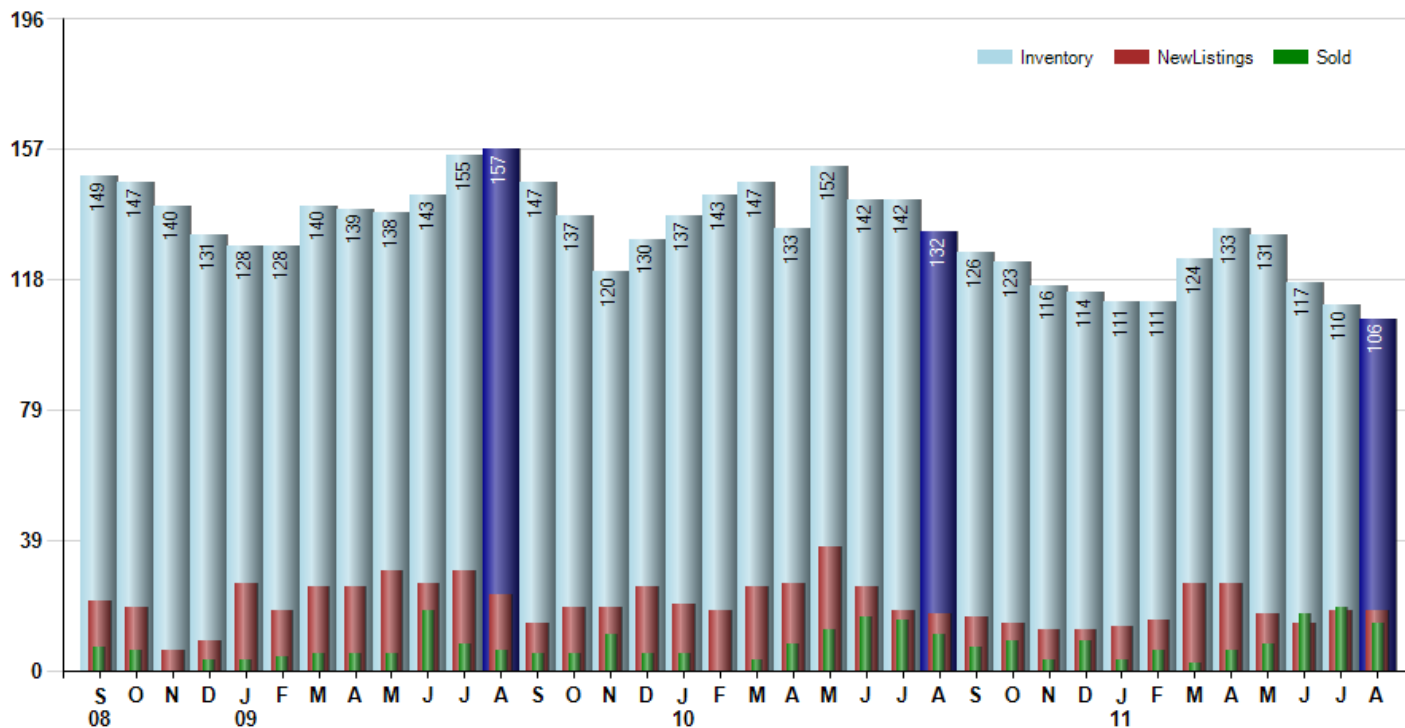
**ART WILSON**  
Broker, Realtor  
847-363-1599  
Art.Wilson@cbexchange.com



Price Range: ALL | Properties: Single Family Home, Townhome, Condo

### Inventory / New Listings / Sales

This last view of the market combines monthly inventory of Properties for sale along with New Listings and Sales. The graph shows the basic annual seasonality of the market as well as the relationship between these items. The number of New Listings in August 2011 was 18, equal to 18 last month and up 5.9% from 17 in August of last year.



Based on information from Midwest Real Estate Data LLC for the period 9/1/2008 through 8/31/2011. Due to MLS reporting methods and allowable reporting policy, this data is only informational and may not be completely accurate. Therefore, Coldwell Banker Residential Brokerage does not guarantee the data accuracy. Data maintained by the MLS's may not reflect all real estate activity in the market.



# MARKET ACTION REPORT

August 2011

## MLS Area: Lincolnshire



**ART WILSON**  
 Broker, Realtor  
 847-363-1599  
 Art.Wilson@cbexchange.com



Price Range: ALL | Properties: Single Family Home, Townhome, Condo

	S 08	O	N	D	J 09	F	M	A	M	J	J	A	S	O	N	D	J 10	F	M	A	M	J	J	A	S	O	N	D	J 11	F	M	A	M	J	J	A
Homes Sold	7	6	0	3	3	4	5	5	5	18	8	6	5	5	11	5	5	0	3	8	12	16	15	11	7	9	3	9	3	6	2	6	8	17	19	14
3 Mo. Roll Avg			4	3	2	3	4	5	5	9	10	11	6	5	7	7	7	3	3	4	8	12	14	14	11	9	6	7	5	6	4	5	5	10	15	17

	(000's) S 08	O	N	D	J 09	F	M	A	M	J	J	A	S	O	N	D	J 10	F	M	A	M	J	J	A	S	O	N	D	J 11	F	M	A	M	J	J	A
Median Sale Price	505	485	0	535	257	390	310	260	255	470	407	695	480	510	480	600	436	0	900	362	416	484	485	475	262	430	400	310	315	541	725	537	504	455	430	269
3 Mo. Roll Avg			330	340	264	394	319	320	275	328	377	524	527	562	490	530	505	345	445	421	559	421	462	481	407	389	364	380	342	389	527	601	588	498	463	385

	S 08	O	N	D	J 09	F	M	A	M	J	J	A	S	O	N	D	J 10	F	M	A	M	J	J	A	S	O	N	D	J 11	F	M	A	M	J	J	A
Inventory	149	147	140	131	128	128	140	139	138	143	155	157	147	137	120	130	137	143	147	133	152	142	142	132	126	123	116	114	111	111	124	133	131	117	110	106
MSI	21	25	0	44	43	32	28	28	28	8	19	26	29	27	11	26	27	0	49	17	13	9	9	12	18	14	39	13	37	19	62	22	16	7	6	8

	S 08	O	N	D	J 09	F	M	A	M	J	J	A	S	O	N	D	J 10	F	M	A	M	J	J	A	S	O	N	D	J 11	F	M	A	M	J	J	A
Days On Market	117	175	0	125	176	168	219	152	150	164	38	119	128	98	66	181	163	0	119	135	112	140	107	134	122	128	299	107	66	173	230	179	168	134	182	90
3 Mo. Roll Avg			97	100	100	156	188	180	174	155	117	107	95	115	97	115	137	115	94	85	122	129	120	127	121	128	183	178	157	115	156	194	192	160	161	135

	S 08	O	N	D	J 09	F	M	A	M	J	J	A	S	O	N	D	J 10	F	M	A	M	J	J	A	S	O	N	D	J 11	F	M	A	M	J	J	A
Price per Sq Ft	172	205	0	153	0	201	252	186	185	161	194	160	183	190	184	132	160	0	202	164	168	174	170	171	159	161	160	146	123	170	188	195	174	168	159	131
3 Mo. Roll Avg			126	119	51	118	151	213	208	177	180	172	179	178	186	169	159	97	121	122	178	169	171	172	167	164	160	156	143	146	160	184	186	179	167	153

	S 08	O	N	D	J 09	F	M	A	M	J	J	A	S	O	N	D	J 10	F	M	A	M	J	J	A	S	O	N	D	J 11	F	M	A	M	J	J	A
Sale to List Price	0.913	0.869	0.000	0.891	0.713	0.875	0.791	0.771	0.804	0.836	0.927	0.901	0.830	0.898	0.899	0.890	0.854	0.000	0.775	0.888	0.884	0.852	0.883	0.866	0.847	0.859	0.784	0.870	0.953	0.851	0.753	0.828	0.856	0.886	0.827	0.876
3 Mo. Roll Avg			0.594	0.587	0.535	0.826	0.793	0.812	0.789	0.804	0.856	0.888	0.886	0.876	0.876	0.896	0.881	0.581	0.543	0.554	0.849	0.875	0.873	0.867	0.865	0.857	0.830	0.838	0.869	0.891	0.852	0.811	0.812	0.857	0.856	0.863

	S 08	O	N	D	J 09	F	M	A	M	J	J	A	S	O	N	D	J 10	F	M	A	M	J	J	A	S	O	N	D	J 11	F	M	A	M	J	J	A
New Listings	21	19	6	9	26	18	25	25	30	26	30	23	14	19	19	25	20	18	25	26	37	25	18	17	16	14	12	12	13	15	26	26	17	14	18	18
Inventory	149	147	140	131	128	128	140	139	138	143	155	157	147	137	120	130	137	143	147	133	152	142	142	132	126	123	116	114	111	111	124	133	131	117	110	106
Sales	7	6	0	3	3	4	5	5	5	18	8	6	5	5	11	5	5	0	3	8	12	16	15	11	7	9	3	9	3	6	2	6	8	17	19	14

	(000's) S 08	O	N	D	J 09	F	M	A	M	J	J	A	S	O	N	D	J 10	F	M	A	M	J	J	A	S	O	N	D	J 11	F	M	A	M	J	J	A
Avg Sale Price	504	492	0	581	266	400	439	295	379	437	455	765	484	611	465	656	420	0	836	400	454	537	546	462	401	467	353	334	257	648	725	611	548	483	471	378
3 Mo. Roll Avg			332	358	282	416	368	378	371	370	423	552	568	620	520	578	514	359	419	412	563	463	512	515	470	443	407	385	315	413	543	662	628	547	501	444

