

MLS Area: Deerfield



ART WILSON
 Broker, Realtor
 847-363-1599
 Art.Wilson@cbexchange.com



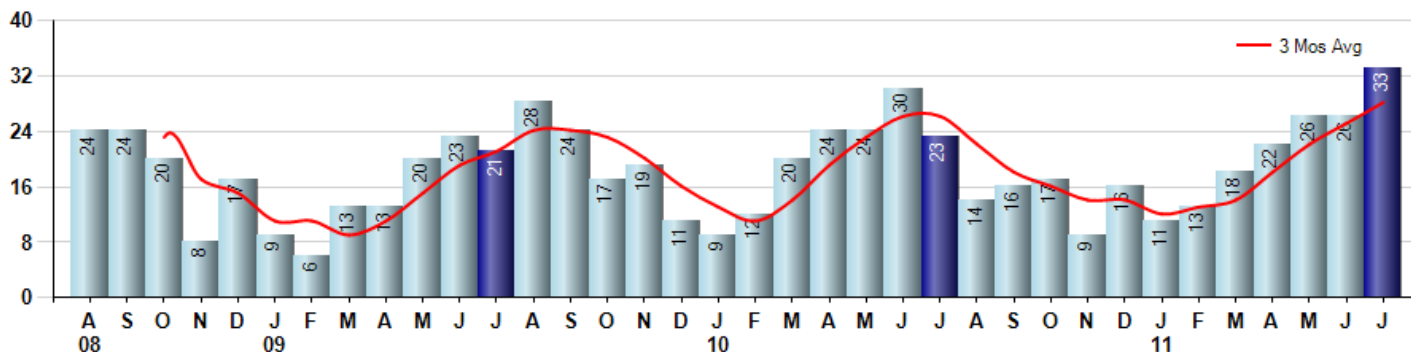
Price Range: ALL | Properties: Single Family Home, Townhome, Condo

Market Profile & Trends Overview	Month	Trending Versus*:				YTD	Trending Versus*:	
		LM	L3M	PYM	LY		PriorYTD	PriorYear
Median List Price of all Current Listings	\$398,000	↔		↓				
Average List Price of all Current Listings	\$519,276	↓		↓				
July Median Sales Price	\$377,000	↓	↑	↓	↑	\$341,000	↓	↓
July Average Sales Price	\$457,807	↓	↑	↓	↑	\$413,018	↓	↔
Total Properties Currently for Sale (Inventory)	191	↓		↓				
July Number of Properties Sold	33	↑		↑		149	↑	
July Average Days on Market (Solds)	97	↑	↑	↓	↓	97	↓	↓
July Month's Supply of Inventory	5.8	↓	↓	↓	↓	10.0	↓	↓
July Sale Price vs List Price Ratio	88.9%	↓	↑	↑	↑	87.9%	↑	↑

* LM=Last Month / L3M=Last 3 Months / PYM=Same Month Prior Year / LY=Last Year / YTD = Year-to-date

Property Sales

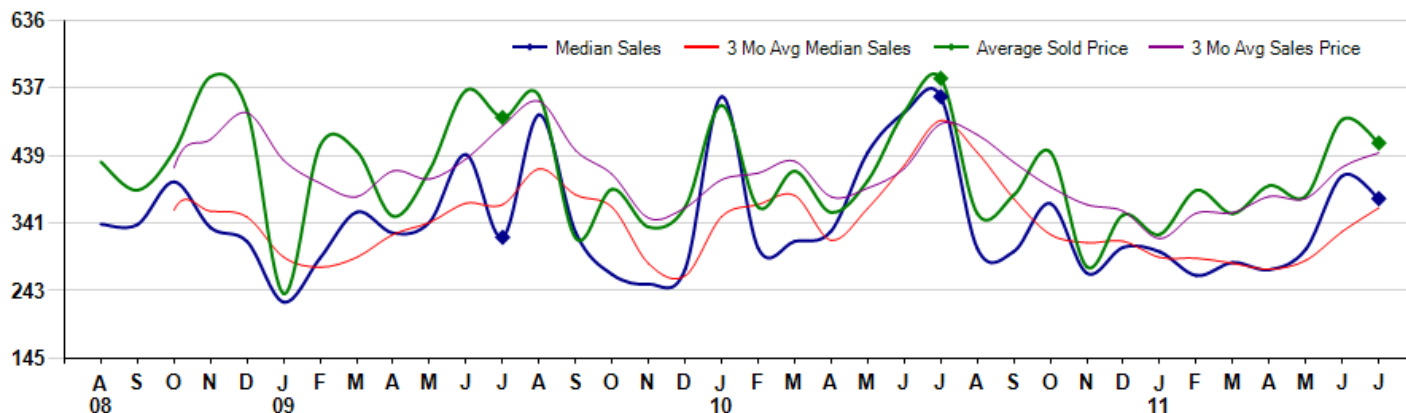
July Property sales were 33, up 43.5% from 23 in July of 2010 and 26.9% higher than the 26 sales last month. July 2011 sales were at their highest level compared to July of 2010 and 2009. July YTD sales of 149 are running 4.9% ahead of last year's year-to-date sales of 142.



Prices

The Median Sales Price in July was \$377,000, down -28.2% from \$525,000 in July of 2010 and down -8.1% from \$410,250 last month. The Average Sales Price in July was \$457,807, down -17.0% from \$551,496 in July of 2010 and down -6.9% from \$491,788 last month. July 2011 ASP was at the lowest level compared to July of 2010 and 2009.

Median means Middle (the same # of properties sold above and below Median) (000's)



Based on information from Midwest Real Estate Data LLC for the period 8/1/2008 through 7/31/2011. Due to MLS reporting methods and allowable reporting policy, this data is only informational and may not be completely accurate. Therefore, Coldwell Banker Residential Brokerage does not guarantee the data accuracy. Data maintained by the MLS's may not reflect all real estate activity in the market.



MLS Area: Deerfield



ART WILSON
 Broker, Realtor
 847-363-1599
 Art.Wilson@cbexchange.com



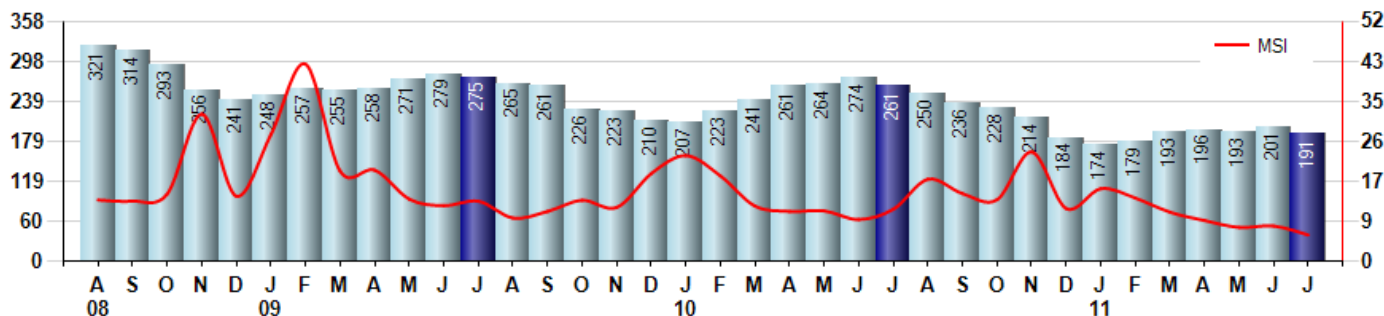
Price Range: ALL | Properties: Single Family Home, Townhome, Condo

Inventory & MSI

The Total Inventory of Properties available for sale as of July was 191, down -5.0% from 201 last month and down -26.8% from 261 in July of last year. July 2011 Inventory was at the lowest level compared to July of 2010 and 2009.

A comparatively lower MSI is more beneficial for sellers while a higher MSI is better for buyers. The July 2011 MSI of 5.8 months was at its lowest level compared with July of 2010 and 2009.

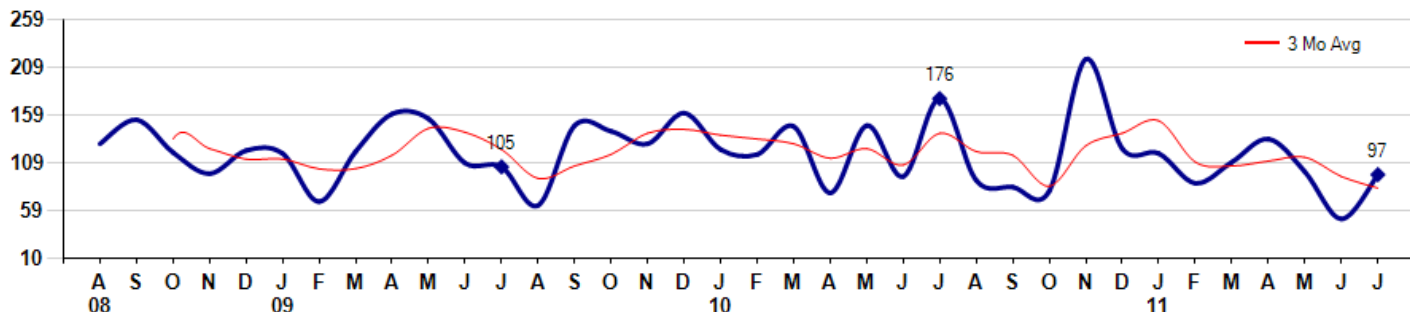
MSI is the # of months needed to sell all of the Inventory at the monthly Sales Pace



Market Time

The average Days On Market (DOM) shows how many days the average Property is on the Market before it sells. An upward trend in DOM tends to indicate a move towards more of a Buyer's market, a downward trend a move towards more of a Seller's market. The DOM for July was 97, up 90.2% from 51 days last month and down -44.9% from 176 days in July of last year. The July 2011 DOM was at its lowest level compared with July of 2010 and 2009.

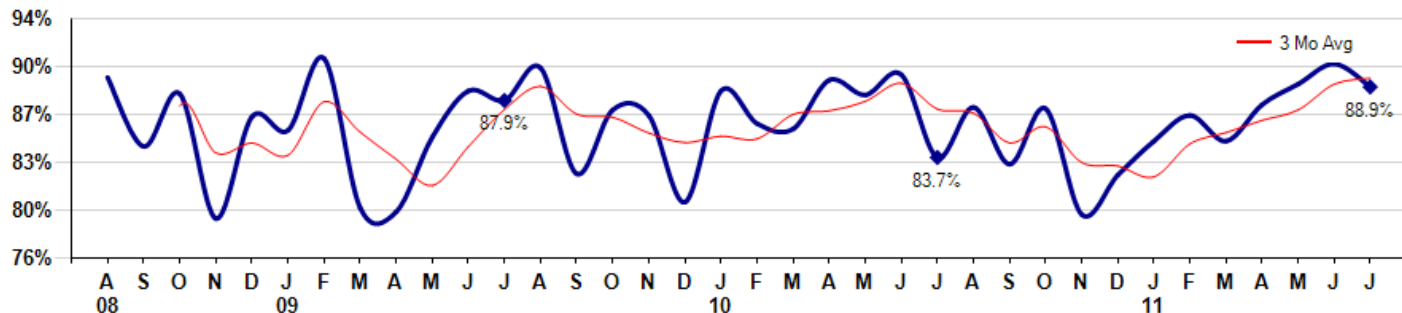
Average Days on Market (Listing to Contract) for properties sold during the month



Selling Price vs Original Listing Price

The Selling Price vs Original Listing Price reveals the average amount that Sellers are agreeing to come down from their original list price. The lower the ratio is below 100% the more of a Buyer's market exists, a ratio at or above 100% indicates more of a Seller's market. The July 2011 Selling Price vs Original List Price of 88.9% was down from 90.6% last month and up from 83.7% in July of last year.

Avg Selling Price divided by Avg Listing Price for sold properties during the month



Based on information from Midwest Real Estate Data LLC for the period 8/1/2008 through 7/31/2011. Due to MLS reporting methods and allowable reporting policy, this data is only informational and may not be completely accurate. Therefore, Coldwell Banker Residential Brokerage does not guarantee the data accuracy. Data maintained by the MLS's may not reflect all real estate activity in the market.



MLS Area: Deerfield



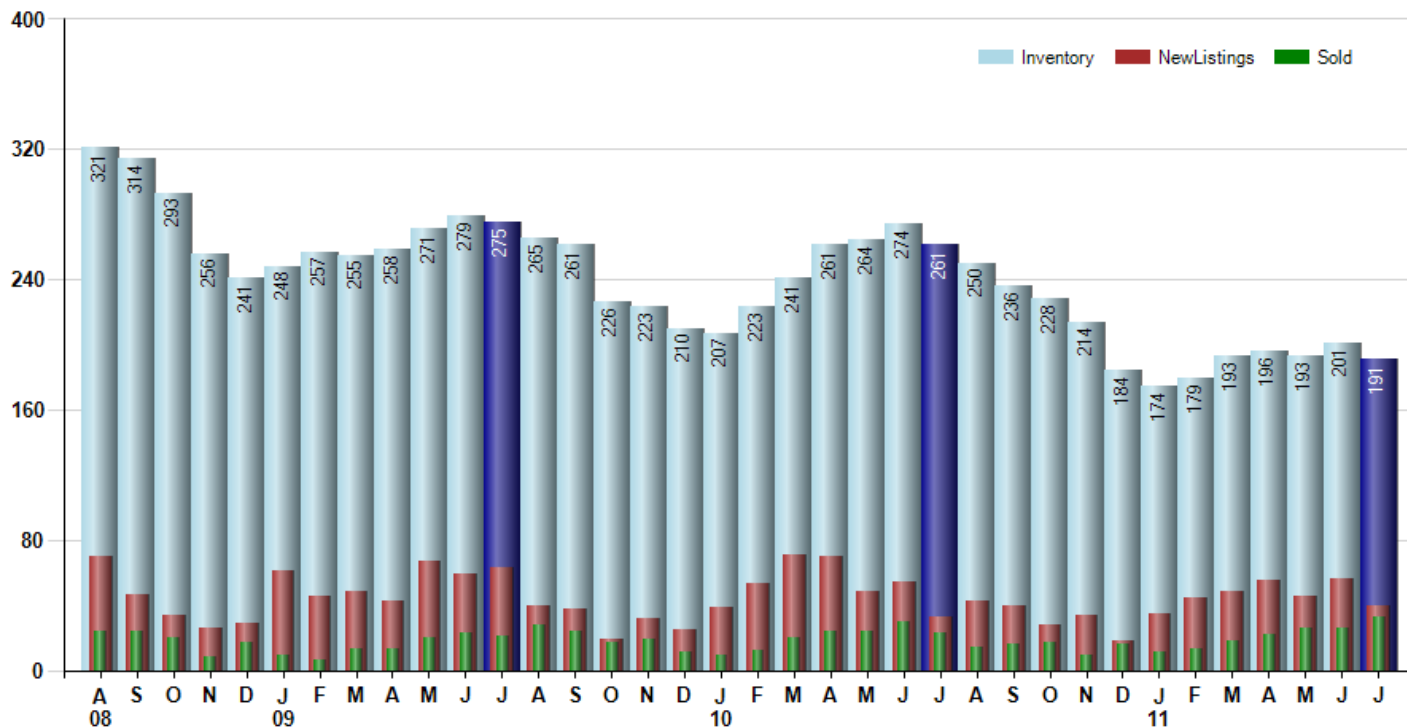
ART WILSON
 Broker, Realtor
 847-363-1599
 Art.Wilson@cbexchange.com



Price Range: ALL | Properties: Single Family Home, Townhome, Condo

Inventory / New Listings / Sales

This last view of the market combines monthly inventory of Properties for sale along with New Listings and Sales. The graph shows the basic annual seasonality of the market as well as the relationship between these items. The number of New Listings in July 2011 was 40, down - 28.6% from 56 last month and up 21.2% from 33 in July of last year.



Based on information from Midwest Real Estate Data LLC for the period 8/1/2008 through 7/31/2011. Due to MLS reporting methods and allowable reporting policy, this data is only informational and may not be completely accurate. Therefore, Coldwell Banker Residential Brokerage does not guarantee the data accuracy. Data maintained by the MLS's may not reflect all real estate activity in the market.



MARKET ACTION REPORT

July 2011

MLS Area: Deerfield



ART WILSON
 Broker, Realtor
 847-363-1599
 Art.Wilson@cbexchange.com



Price Range: ALL | Properties: Single Family Home, Townhome, Condo

	A 08	S	O	N	D	J 09	F	M	A	M	J	J	A	S	O	N	D	J 10	F	M	A	M	J	J	A	S	O	N	D	J 11	F	M	A	M	J	J
Homes Sold	24	24	20	8	17	9	6	13	13	20	23	21	28	24	17	19	11	9	12	20	24	24	30	23	14	16	17	9	16	11	13	18	22	26	26	33
3 Mo. Roll Avg			23	17	15	11	11	9	11	15	19	21	24	24	23	20	16	13	11	14	19	23	26	26	22	18	16	14	14	12	13	14	18	22	25	28

	(000's) A 08	S	O	N	D	J 09	F	M	A	M	J	J	A	S	O	N	D	J 10	F	M	A	M	J	J	A	S	O	N	D	J 11	F	M	A	M	J	J
Median Sale Price	340	340	402	335	315	227	291	358	327	343	441	321	499	328	267	253	275	525	305	315	330	444	502	525	305	301	370	269	307	300	266	284	274	304	410	377
3 Mo. Roll Avg			360	359	351	292	278	292	325	343	370	368	420	383	365	283	265	351	368	382	317	363	425	490	444	377	325	313	315	292	291	283	275	287	329	364

	A 08	S	O	N	D	J 09	F	M	A	M	J	J	A	S	O	N	D	J 10	F	M	A	M	J	J	A	S	O	N	D	J 11	F	M	A	M	J	J
Inventory	321	314	293	256	241	248	257	255	258	271	279	275	265	261	226	223	210	207	223	241	261	264	274	261	250	236	228	214	184	174	179	193	196	193	201	191
MSI	13	13	15	32	14	28	43	20	20	14	12	13	9	11	13	12	19	23	19	12	11	11	9	11	18	15	13	24	12	16	14	11	9	7	8	6

	A 08	S	O	N	D	J 09	F	M	A	M	J	J	A	S	O	N	D	J 10	F	M	A	M	J	J	A	S	O	N	D	J 11	F	M	A	M	J	J
Days On Market	129	154	120	98	122	119	69	121	160	155	109	105	65	148	142	129	161	123	118	147	78	148	95	176	91	84	80	217	124	119	88	110	134	100	51	97
3 Mo. Roll Avg			134	124	113	113	103	103	117	145	141	123	93	106	118	140	144	138	134	129	114	124	107	140	121	117	85	127	140	153	110	106	111	115	95	83

	A 08	S	O	N	D	J 09	F	M	A	M	J	J	A	S	O	N	D	J 10	F	M	A	M	J	J	A	S	O	N	D	J 11	F	M	A	M	J	J
Price per Sq Ft	243	214	212	176	215	150	131	196	156	216	218	184	208	139	140	198	150	202	149	160	146	183	202	204	149	187	178	149	156	145	155	166	151	170	198	171
3 Mo. Roll Avg			223	201	201	180	165	159	161	189	197	206	203	177	162	159	163	183	167	170	152	163	177	196	185	180	171	171	161	150	152	155	157	162	173	180

	A 08	S	O	N	D	J 09	F	M	A	M	J	J	A	S	O	N	D	J 10	F	M	A	M	J	J	A	S	O	N	D	J 11	F	M	A	M	J	J
Sale to List Price	0.896	0.845	0.884	0.792	0.867	0.857	0.910	0.800	0.797	0.852	0.886	0.879	0.903	0.825	0.872	0.868	0.804	0.886	0.862	0.858	0.894	0.883	0.898	0.837	0.874	0.832	0.873	0.795	0.824	0.849	0.868	0.849	0.876	0.891	0.906	0.889
3 Mo. Roll Avg			0.875	0.840	0.848	0.839	0.878	0.856	0.836	0.816	0.845	0.872	0.889	0.869	0.867	0.855	0.848	0.853	0.851	0.869	0.871	0.878	0.892	0.873	0.870	0.848	0.860	0.833	0.831	0.823	0.847	0.855	0.864	0.872	0.891	0.895

	A 08	S	O	N	D	J 09	F	M	A	M	J	J	A	S	O	N	D	J 10	F	M	A	M	J	J	A	S	O	N	D	J 11	F	M	A	M	J	J
New Listings	70	46	34	26	29	61	45	48	43	67	59	63	40	38	19	32	25	39	53	71	70	48	54	33	43	40	28	34	18	35	44	48	55	45	56	40
Inventory	321	314	293	256	241	248	257	255	258	271	279	275	265	261	226	223	210	207	223	241	261	264	274	261	250	236	228	214	184	174	179	193	196	193	201	191
Sales	24	24	20	8	17	9	6	13	13	20	23	21	28	24	17	19	11	9	12	20	24	24	30	23	14	16	17	9	16	11	13	18	22	26	26	33

	(000's) A 08	S	O	N	D	J 09	F	M	A	M	J	J	A	S	O	N	D	J 10	F	M	A	M	J	J	A	S	O	N	D	J 11	F	M	A	M	J	J
Avg Sale Price	430	389	446	554	506	239	454	446	352	419	534	495	526	320	391	336	365	512	365	417	357	403	502	551	356	382	445	278	354	325	389	355	396	381	492	458
3 Mo. Roll Avg			422	463	502	433	400	380	417	405	435	482	518	447	412	349	364	404	414	431	380	392	421	486	470	430	394	368	359	319	356	357	380	377	423	443

Based on information from Midwest Real Estate Data LLC for the period 8/1/2008 through 7/31/2011. Due to MLS reporting methods and allowable reporting policy, this data is only informational and may not be completely accurate. Therefore, Coldwell Banker Residential Brokerage does not guarantee the data accuracy. Data maintained by the MLS's may not reflect all real estate activity in the market.

