

MLS Area: Highland Park



ART WILSON

Broker, Realtor

847-363-1599

www.NorthShoreHomesOnline.com

Art.Wilson@cbexchange.com



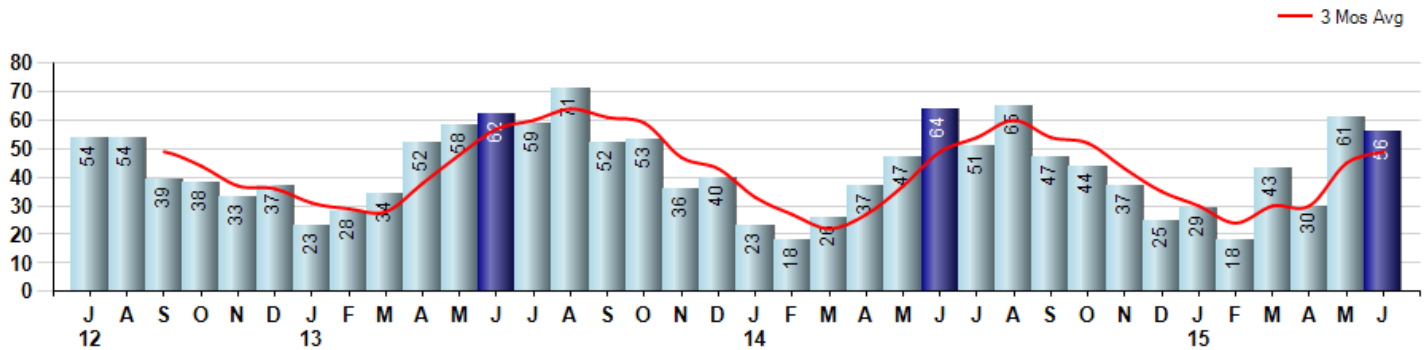
Price Range: \$0 to \$999,999,000 | Properties: Single Family Home, Townhome, Condo

Market Profile & Trends Overview	Month	Trending Versus*:				YTD	Trending Versus*:	
		LM	L3M	PYM	LY		PriorYTD	PriorYear
Median List Price of all Current Listings	\$699,000	↑		↓				
Average List Price of all Current Listings	\$960,165	↑		↓				
June Median Sales Price	\$545,000	↑	↑	↑	↑	\$495,000	↔	↔
June Average Sales Price	\$621,075	↑	↑	↔	↑	\$530,317	↓	↓
Total Properties Currently for Sale (Inventory)	291	↓		↑				
June Number of Properties Sold	56	↓		↓		237	↑	
June Average Days on Market (Solds)	59	↓	↓	↓	↓	75	↑	↑
June Month's Supply of Inventory	5.2	↑		↑	↓	7.5	↑	↑
June Sale Price vs List Price Ratio	95.1%	↓	↔	↓	↑	95.1%	↑	↑

* LM=Last Month / L3M=Last 3 Months / PYM=Same Month Prior Year / LY=Last Year / YTD = Year-to-date

Property Sales

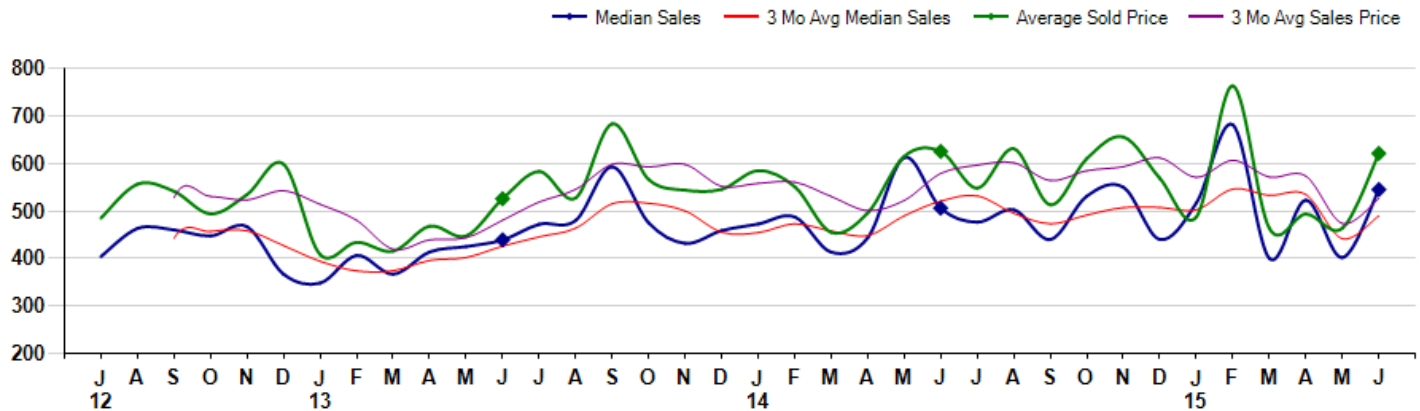
June Property sales were 56, down -12.5% from 64 in June of 2014 and -8.2% lower than the 61 sales last month. June 2015 sales were at their lowest level compared to June of 2014 and 2013. June YTD sales of 237 are running 10.2% ahead of last year's year-to-date sales of 215.



Prices

The Median Sales Price in June was \$545,000, up 7.7% from \$506,000 in June of 2014 and up 35.6% from \$401,800 last month. The Average Sales Price in June was \$621,075, down -0.7% from \$625,366 in June of 2014 and up 33.9% from \$463,904 last month. June 2015 ASP was at a mid range compared to June of 2014 and 2013.

Median means Middle (the same # of properties sold above and below Median) (000's)



MLS Area: Highland Park



ART WILSON
 Broker, Realtor
 847-363-1599
 www.NorthShoreHomesOnline.com
 Art.Wilson@cbexchange.com



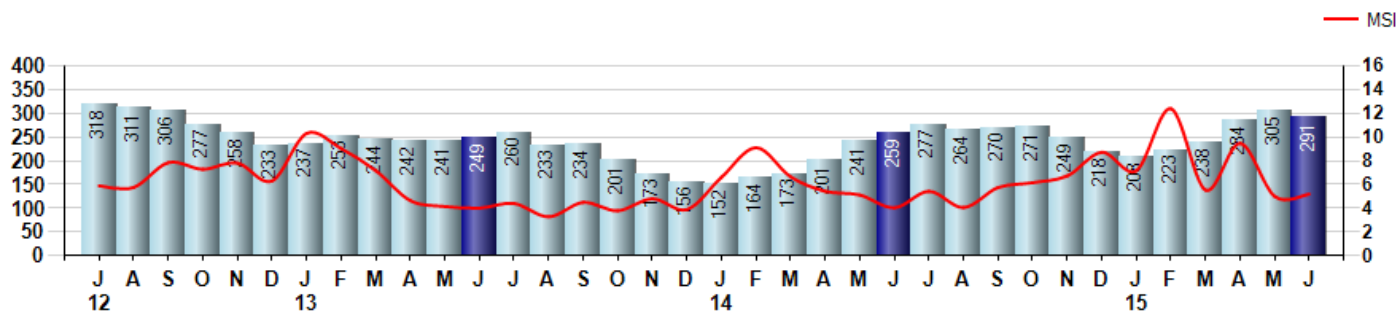
Price Range: \$0 to \$999,999,000 | Properties: Single Family Home, Townhome, Condo

Inventory & MSI

The Total Inventory of Properties available for sale as of June was 291, down -4.6% from 305 last month and up 12.4% from 259 in June of last year. June 2015 Inventory was at highest level compared to June of 2014 and 2013.

A comparatively lower MSI is more beneficial for sellers while a higher MSI is better for buyers. The June 2015 MSI of 5.2 months was at its highest level compared with June of 2014 and 2013.

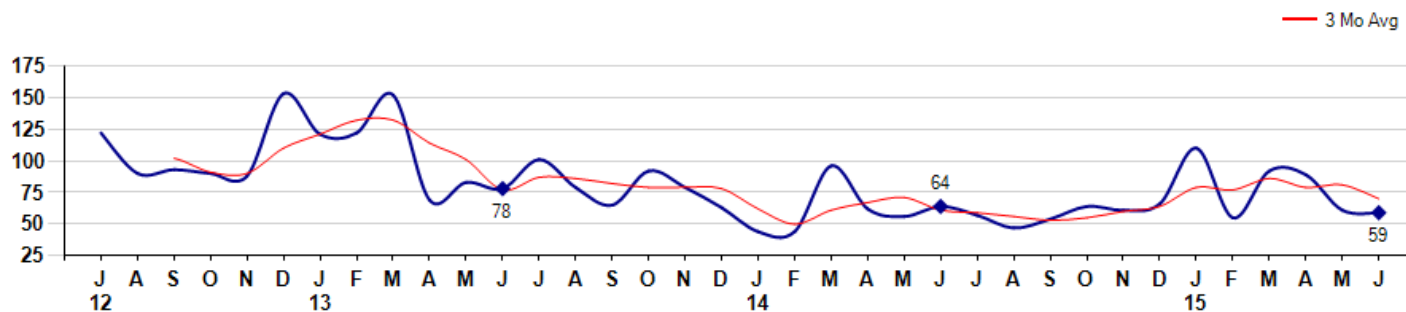
MSI is the # of months needed to sell all of the Inventory at the monthly Sales Pace



Market Time

The average Days On Market(DOM) shows how many days the average Property is on the Market before it sells. An upward trend in DOM tends to indicate a move towards more of a Buyer's market, a downward trend a move towards more of a Seller's market. The DOM for June was 59, down -3.3% from 61 days last month and down -7.8% from 64 days in June of last year. The June 2015 DOM was at its lowest level compared with June of 2014 and 2013.

Average Days on Market(Listing to Contract) for properties sold during the month



© 2015 Coldwell Banker Real Estate LLC. All Rights Reserved. Coldwell Banker Residential Brokerage fully supports the principles of the Fair Housing Act and the Equal Opportunity Act. Coldwell Banker Residential Brokerage is operated by a subsidiary of NRT LLC. Coldwell Banker and the Coldwell Banker Logo are registered service marks owned by Coldwell Banker Real Estate LLC.

Based on information from Midwest Real Estate Data LLC for the period 7/1/2012 through 6/30/2015. Due to MLS reporting methods and allowable reporting policy, this data is only informational and may not be completely accurate. Therefore, Coldwell Banker Residential Brokerage does not guarantee the data accuracy. Data maintained by the MLS's may not reflect all real estate activity in the market.



MLS Area: Highland Park



ART WILSON

Broker, Realtor

847-363-1599

www.NorthShoreHomesOnline.com

Art.Wilson@cbexchange.com

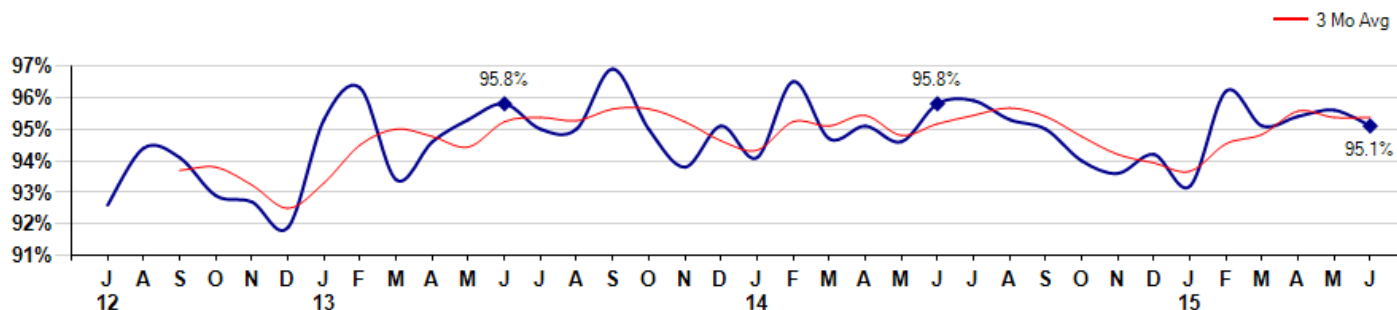


Price Range: \$0 to \$999,999,000 | Properties: Single Family Home, Townhome, Condo

Selling Price vs Listing Price

The Selling Price vs Listing Price reveals the average amount that Sellers are agreeing to come down from their list price. The lower the ratio is below 100% the more of a Buyer's market exists, a ratio at or above 100% indicates more of a Seller's market. The June 2015 Selling Price vs List Price of 95.1% was down from 95.6% last month and down from 95.8% in June of last year.

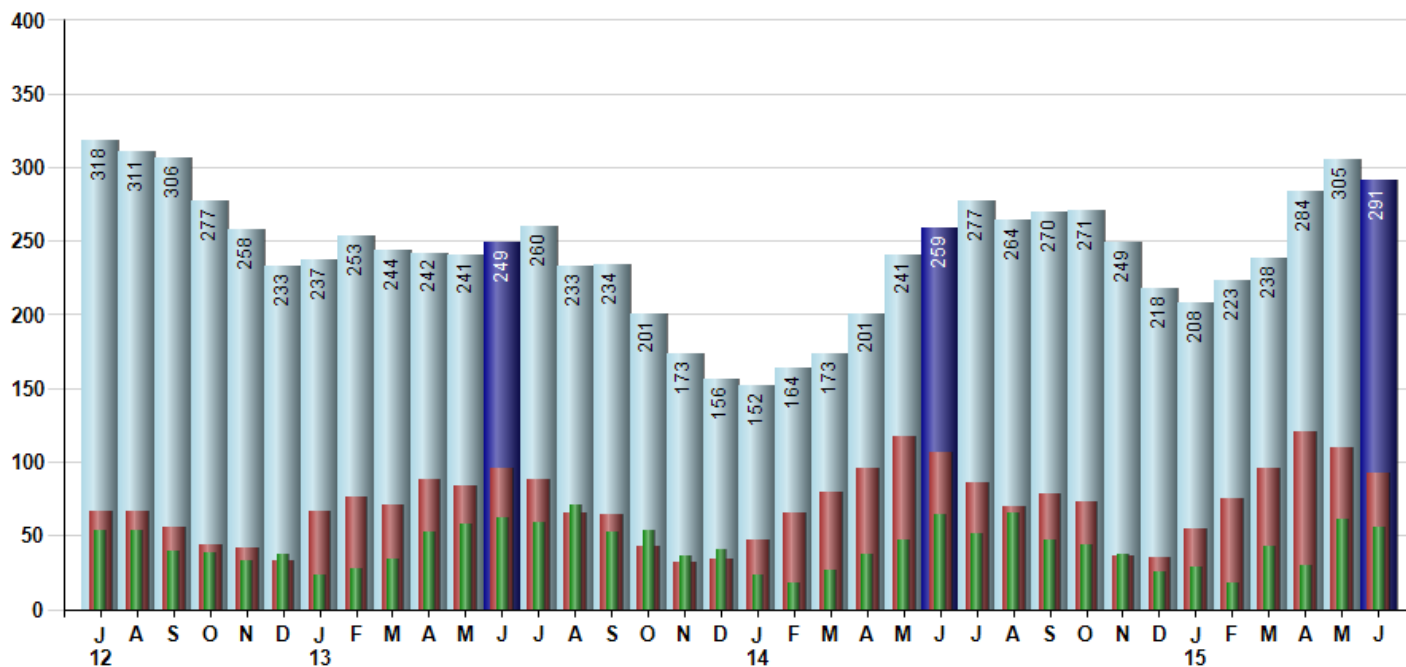
Avg Selling Price divided by Avg Listing Price for sold properties during the month



Inventory / New Listings / Sales

This last view of the market combines monthly inventory of Properties for sale along with New Listings and Sales. The graph shows the basic annual seasonality of the market as well as the relationship between these items. The number of New Listings in June 2015 was 92, down -16.4% from 110 last month and down -14.0% from 107 in June of last year.

Inventory New Listings Sold



© 2015 Coldwell Banker Real Estate LLC. All Rights Reserved. Coldwell Banker Residential Brokerage fully supports the principles of the Fair Housing Act and the Equal Opportunity Act. Coldwell Banker Residential Brokerage is operated by a subsidiary of NRT LLC. Coldwell Banker and the Coldwell Banker Logo are registered service marks owned by Coldwell Banker Real Estate LLC.

Based on information from Midwest Real Estate Data LLC for the period 7/1/2012 through 6/30/2015. Due to MLS reporting methods and allowable reporting policy, this data is only informational and may not be completely accurate. Therefore, Coldwell Banker Residential Brokerage does not guarantee the data accuracy. Data maintained by the MLS's may not reflect all real estate activity in the market.



MARKET ACTION REPORT

June 2015

MLS Area: Highland Park



ART WILSON
 Broker, Realtor
 847-363-1599
 www.NorthShoreHomesOnline.com
 Art.Wilson@cbexchange.com



Price Range: \$0 to \$999,999,000 | Properties: Single Family Home, Townhome, Condo

	J 12	A	S	O	N	D	J 13	F	M	A	M	J	J	A	S	O	N	D	J 14	F	M	A	M	J	J	A	S	O	N	D	J 15	F	M	A	M	J
Homes Sold	54	54	39	38	33	37	23	28	34	52	58	62	59	71	52	53	36	40	23	18	26	37	47	64	51	65	47	44	37	25	29	18	43	30	61	56
3 Mo. Roll Avg			49	44	37	36	31	29	28	38	48	57	60	64	61	59	47	43	33	27	22	27	37	49	54	60	54	52	43	35	30	24	30	30	45	49

(000's)	J 12	A	S	O	N	D	J 13	F	M	A	M	J	J	A	S	O	N	D	J 14	F	M	A	M	J	J	A	S	O	N	D	J 15	F	M	A	M	J
Median Sale Price	404	463	460	448	467	367	348	406	367	414	425	439	472	480	593	475	432	459	473	488	413	444	613	506	476	503	440	531	550	440	517	681	400	523	402	545
3 Mo. Roll Avg			442	457	458	427	394	374	374	396	402	426	445	464	515	516	500	455	454	473	458	448	490	521	532	495	473	491	507	507	502	546	533	535	442	490

	J 12	A	S	O	N	D	J 13	F	M	A	M	J	J	A	S	O	N	D	J 14	F	M	A	M	J	J	A	S	O	N	D	J 15	F	M	A	M	J
Inventory	318	311	306	277	258	233	237	253	244	242	241	249	260	233	234	201	173	156	152	164	173	201	241	259	277	264	270	271	249	218	208	223	238	284	305	291
MSI	6	6	8	7	8	6	10	9	7	5	4	4	4	3	5	4	5	4	7	9	7	5	5	4	5	4	6	6	7	9	7	12	6	9	5	5

	J 12	A	S	O	N	D	J 13	F	M	A	M	J	J	A	S	O	N	D	J 14	F	M	A	M	J	J	A	S	O	N	D	J 15	F	M	A	M	J
Days On Market	122	90	93	90	88	153	121	122	152	69	83	78	101	79	65	92	79	63	44	44	96	62	56	64	57	47	54	64	61	66	110	55	92	89	61	59
3 Mo. Roll Avg			102	91	90	110	121	132	132	114	101	77	87	86	82	79	79	78	62	50	61	67	71	61	59	56	53	55	60	64	79	77	86	79	81	70

	J 12	A	S	O	N	D	J 13	F	M	A	M	J	J	A	S	O	N	D	J 14	F	M	A	M	J	J	A	S	O	N	D	J 15	F	M	A	M	J
Price per Sq Ft	172	179	190	190	183	187	169	166	190	183	180	196	202	188	224	195	207	209	211	239	189	201	215	218	205	215	208	215	219	220	198	216	199	211	202	221
3 Mo. Roll Avg			180	186	188	187	180	174	175	180	184	186	193	195	205	202	209	204	209	220	213	210	202	211	213	213	209	213	214	218	212	211	204	209	204	211

	J 12	A	S	O	N	D	J 13	F	M	A	M	J	J	A	S	O	N	D	J 14	F	M	A	M	J	J	A	S	O	N	D	J 15	F	M	A	M	J
Sale to List Price	0.926	0.944	0.941	0.929	0.927	0.919	0.953	0.963	0.934	0.946	0.953	0.958	0.950	0.950	0.969	0.950	0.938	0.951	0.941	0.965	0.947	0.951	0.946	0.958	0.959	0.953	0.950	0.940	0.936	0.942	0.932	0.962	0.951	0.954	0.956	0.951
3 Mo. Roll Avg			0.937	0.938	0.932	0.925	0.933	0.945	0.950	0.948	0.944	0.952	0.954	0.953	0.956	0.956	0.952	0.946	0.943	0.952	0.951	0.954	0.948	0.952	0.954	0.957	0.954	0.948	0.942	0.939	0.937	0.945	0.948	0.956	0.954	0.954

	J 12	A	S	O	N	D	J 13	F	M	A	M	J	J	A	S	O	N	D	J 14	F	M	A	M	J	J	A	S	O	N	D	J 15	F	M	A	M	J
New Listings	67	66	56	44	42	33	66	76	71	88	84	96	88	65	64	43	32	34	47	65	79	96	117	107	86	70	78	73	36	35	55	75	96	121	110	92
Inventory	318	311	306	277	258	233	237	253	244	242	241	249	260	233	234	201	173	156	152	164	173	201	241	259	277	264	270	271	249	218	208	223	238	284	305	291
Sales	54	54	39	38	33	37	23	28	34	52	58	62	59	71	52	53	36	40	23	18	26	37	47	64	51	65	47	44	37	25	29	18	43	30	61	56

(000's)	J 12	A	S	O	N	D	J 13	F	M	A	M	J	J	A	S	O	N	D	J 14	F	M	A	M	J	J	A	S	O	N	D	J 15	F	M	A	M	J
Avg Sale Price	485	557	541	494	535	599	409	434	415	468	447	526	583	527	684	566	544	546	585	551	455	496	615	625	548	631	513	610	656	569	487	763	463	494	464	621
3 Mo. Roll Avg			528	531	523	542	514	480	419	439	444	480	519	545	598	592	598	552	558	561	530	501	522	579	596	601	564	585	593	612	571	607	571	573	474	526

© 2015 Coldwell Banker Real Estate LLC. All Rights Reserved. Coldwell Banker Residential Brokerage fully supports the principles of the Fair Housing Act and the Equal Opportunity Act. Coldwell Banker Residential Brokerage is operated by a subsidiary of NRT LLC. Coldwell Banker and the Coldwell Banker Logo are registered service marks owned by Coldwell Banker Real Estate LLC.

Based on information from Midwest Real Estate Data LLC for the period 7/1/2012 through 6/30/2015. Due to MLS reporting methods and allowable reporting policy, this data is only informational and may not be completely accurate. Therefore, Coldwell Banker Residential Brokerage does not guarantee the data accuracy. Data maintained by the MLS's may not reflect all real estate activity in the market.

