

MLS Area: Lincolnshire



ART WILSON
Broker, Realtor
847-363-1599
Art.Wilson@cbexchange.com



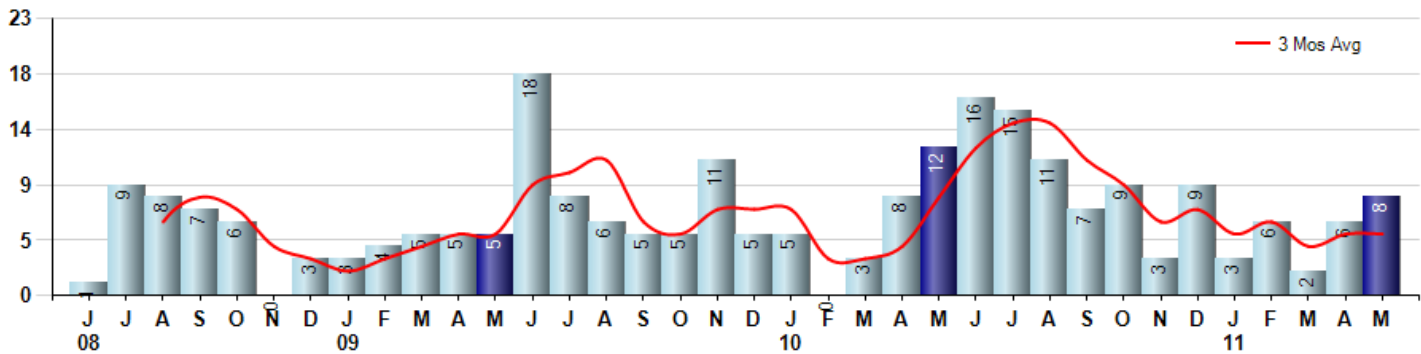
Price Range: ALL | Properties: Single Family Home, Townhome, Condo

Market Profile & Trends Overview	Month	Trending Versus*:				YTD	Trending Versus*:	
		LM	L3M	PYM	LY		PriorYTD	PriorYear
Median List Price of all Current Listings	\$499,990	↓		↓				
Average List Price of all Current Listings	\$596,927	↓		↓				
May Median Sales Price	\$503,750	↓	↔	↑	↑	\$460,000	↑	↑
May Average Sales Price	\$548,231	↓	↓	↑	↑	\$566,594	↑	↑
Total Properties Currently for Sale (Inventory)	127	↓		↓				
May Number of Properties Sold	8	↑		↓		25	↓	
May Average Days on Market (Solds)	168	↓	↓	↑	↑	164	↑	↑
May Month's Supply of Inventory	15.9	↓	↓	↑	↓	31.3	↑	↑
May Sale Price vs List Price Ratio	85.6%	↑	↑	↓	↔	81.4%	↓	↓

* LM=Last Month / L3M=Last 3 Months / PYM=Same Month Prior Year / LY=Last Year / YTD = Year-to-date

Property Sales

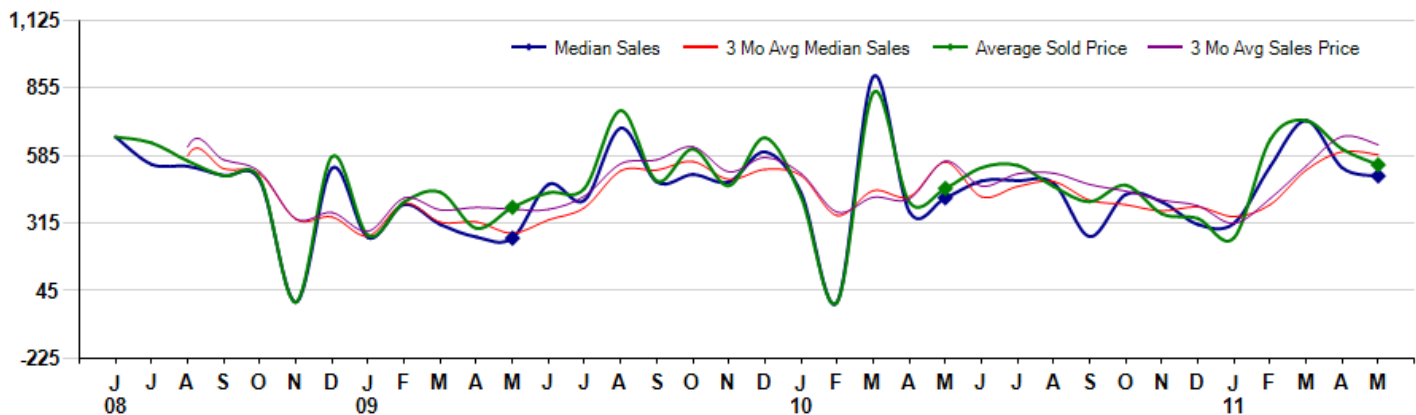
May Property sales were 8, down -33.3% from 12 in May of 2010 and 33.3% higher than the 6 sales last month. May 2011 sales were at a mid level compared to May of 2010 and 2009. May YTD sales of 25 are running -10.7% behind last year's year-to-date sales of 28.



Prices

The Median Sales Price in May was \$503,750, up 21.0% from \$416,250 in May of 2010 and down -6.1% from \$536,500 last month. The Average Sales Price in May was \$548,231, up 20.8% from \$453,948 in May of 2010 and down -10.3% from \$611,417 last month. May 2011 ASP was at highest level compared to May of 2010 and 2009.

Median means Middle (the same # of properties sold above and below Median) (000's)



MLS Area: Lincolnshire

Price Range: ALL | Properties: Single Family Home, Townhome, Condo



ART WILSON
Broker, Realtor
847-363-1599
Art.Wilson@cbexchange.com

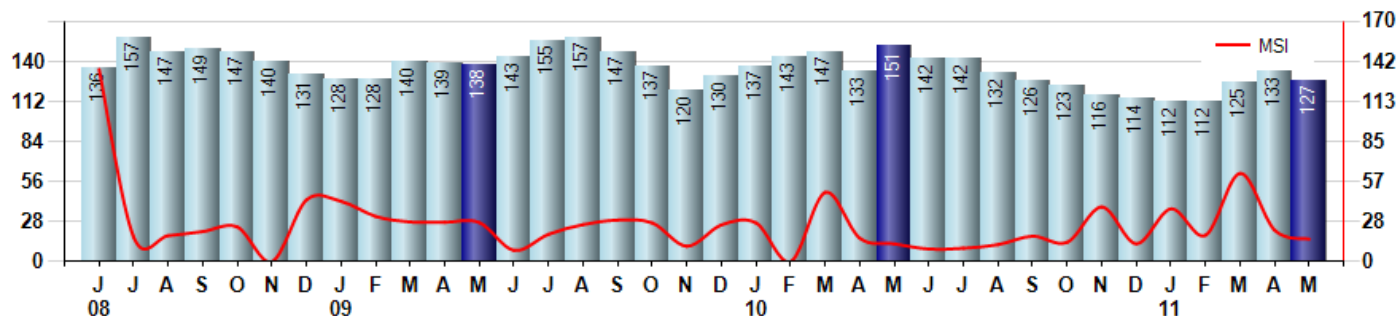


Inventory & MSI

The Total Inventory of Properties available for sale as of May was 127, down -4.5% from 133 last month and down -15.9% from 151 in May of last year. May 2011 Inventory was at the lowest level compared to May of 2010 and 2009.

A comparatively lower MSI is more beneficial for sellers while a higher MSI is better for buyers. The May 2011 MSI of 15.9 months was at a mid range compared with May of 2010 and 2009.

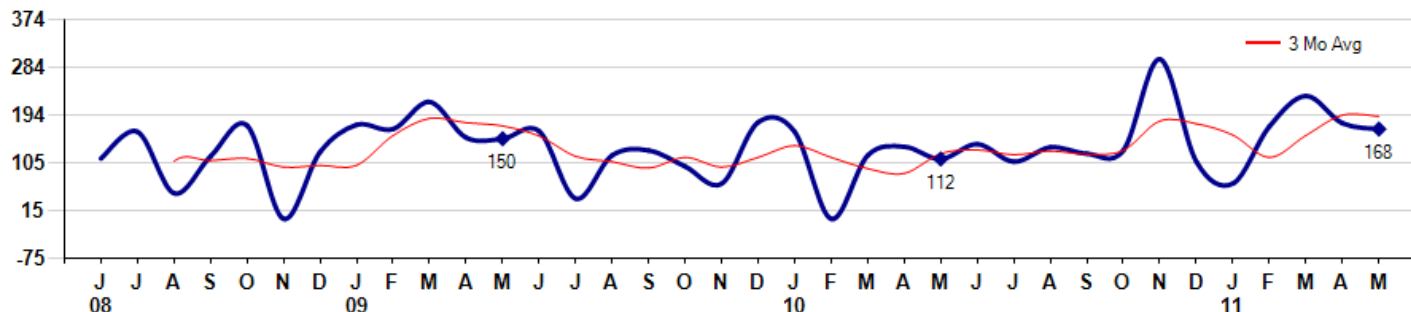
MSI is the # of months needed to sell all of the Inventory at the monthly Sales Pace



Market Time

The average Days On Market(DOM) shows how many days the average Property is on the Market before it sells. An upward trend in DOM tends to indicate a move towards more of a Buyer's market, a downward trend a move towards more of a Seller's market. The DOM for May was 168, down -6.1% from 179 days last month and up 50.0% from 112 days in May of last year. The May 2011 DOM was at its highest level compared with May of 2010 and 2009.

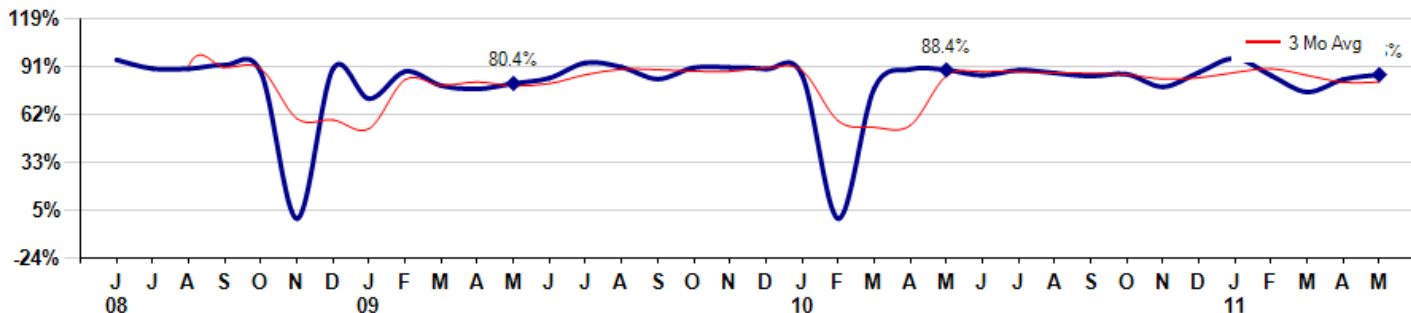
Average Days on Market(Listing to Contract) for properties sold during the month



Selling Price vs Original Listing Price

The Selling Price vs Original Listing Price reveals the average amount that Sellers are agreeing to come down from their original list price. The lower the ratio is below 100% the more of a Buyer's market exists, a ratio at or above 100% indicates more of a Seller's market. The May 2011 Selling Price vs Original List Price of 85.6% was up from 82.8% last month and down from 88.4% in May of last year.

Avg Selling Price divided by Avg Listing Price for sold properties during the month



Based on information from Midwest Real Estate Data LLC for the period 6/1/2008 through 5/31/2011. Due to MLS reporting methods and allowable reporting policy, this data is only informational and may not be completely accurate. Therefore, Coldwell Banker Residential Brokerage does not guarantee the data accuracy. Data maintained by the MLS's may not reflect all real estate activity in the market.



MLS Area: Lincolnshire



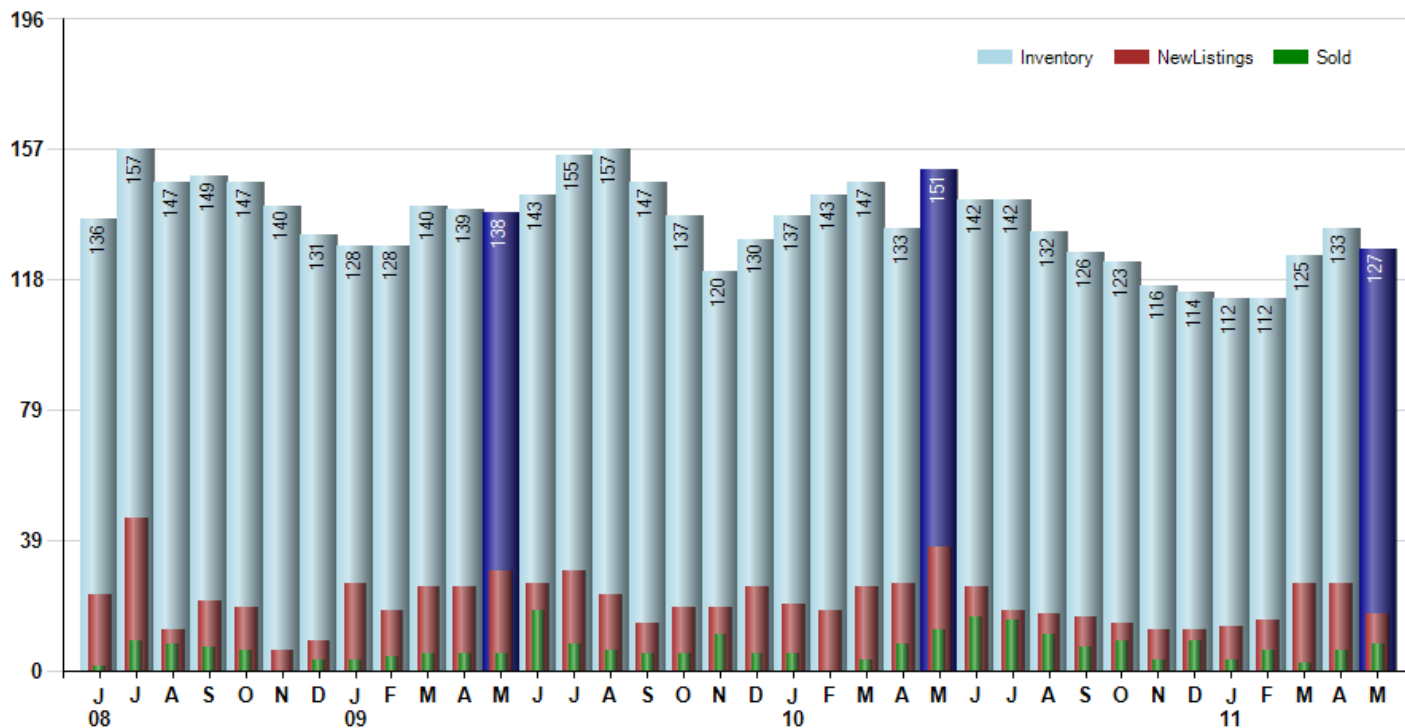
ART WILSON
Broker, Realtor
847-363-1599
Art.Wilson@cbexchange.com



Price Range: ALL | Properties: Single Family Home, Townhome, Condo

Inventory / New Listings / Sales

This last view of the market combines monthly inventory of Properties for sale along with New Listings and Sales. The graph shows the basic annual seasonality of the market as well as the relationship between these items. The number of New Listings in May 2011 was 17, down -34.6% from 26 last month and down -54.1% from 37 in May of last year.



Based on information from Midwest Real Estate Data LLC for the period 6/1/2008 through 5/31/2011. Due to MLS reporting methods and allowable reporting policy, this data is only informational and may not be completely accurate. Therefore, Coldwell Banker Residential Brokerage does not guarantee the data accuracy. Data maintained by the MLS's may not reflect all real estate activity in the market.



MARKET ACTION REPORT

May 2011

MLS Area: Lincolnshire



ART WILSON
 Broker, Realtor
 847-363-1599
 Art.Wilson@cbexchange.com



Price Range: ALL | Properties: Single Family Home, Townhome, Condo

	J 08	J	A	S	O	N	D	J 09	F	M	A	M	J	J	A	S	O	N	D	J 10	F	M	A	M	J	J	A	S	O	N	D	J 11	F	M	A	M
Homes Sold	1	9	8	7	6	0	3	3	4	5	5	5	18	8	6	5	5	11	5	5	0	3	8	12	16	15	11	7	9	3	9	3	6	2	6	8
3 Mo. Roll Avg			6	8	7	4	3	2	3	4	5	5	9	10	11	6	5	7	7	7	3	3	4	8	12	14	14	11	9	6	7	5	6	4	5	5

(000's)	J 08	J	A	S	O	N	D	J 09	F	M	A	M	J	J	A	S	O	N	D	J 10	F	M	A	M	J	J	A	S	O	N	D	J 11	F	M	A	M
Median Sale Price	660	550	543	505	485	0	535	257	390	310	260	255	470	407	695	480	510	480	600	436	0	900	362	416	484	485	475	262	430	400	310	315	541	725	537	504
3 Mo. Roll Avg			584	532	511	330	340	264	394	319	320	275	328	377	524	527	562	490	530	505	345	445	421	559	421	462	481	407	389	364	380	342	389	527	601	588

	J 08	J	A	S	O	N	D	J 09	F	M	A	M	J	J	A	S	O	N	D	J 10	F	M	A	M	J	J	A	S	O	N	D	J 11	F	M	A	M
Inventory	136	157	147	149	147	140	131	128	128	140	139	138	143	155	157	147	137	120	130	137	143	147	133	151	142	142	132	126	123	116	114	112	112	125	133	127
MSI	136	17	18	21	25	0	44	43	32	28	28	28	8	19	26	29	27	11	26	27	0	49	17	13	9	9	12	18	14	39	13	37	19	63	22	16

	J 08	J	A	S	O	N	D	J 09	F	M	A	M	J	J	A	S	O	N	D	J 10	F	M	A	M	J	J	A	S	O	N	D	J 11	F	M	A	M
Days On Market	113	163	48	117	175	0	125	176	168	219	152	150	164	38	119	128	98	66	181	163	0	119	135	112	140	107	134	122	128	299	107	66	173	230	179	168
3 Mo. Roll Avg			108	109	113	97	100	100	156	188	180	174	155	117	107	95	115	97	115	137	115	94	85	122	129	120	127	121	128	183	178	157	115	156	194	192

	J 08	J	A	S	O	N	D	J 09	F	M	A	M	J	J	A	S	O	N	D	J 10	F	M	A	M	J	J	A	S	O	N	D	J 11	F	M	A	M
Price per Sq Ft	0	179	182	172	205	0	153	0	201	252	186	185	161	194	160	183	190	184	132	160	0	202	164	168	174	170	171	159	161	160	146	123	170	188	195	174
3 Mo. Roll Avg			120	178	186	126	119	51	118	151	213	208	177	180	172	179	178	186	169	159	97	121	122	178	169	171	172	167	164	160	156	143	146	160	184	186

	J 08	J	A	S	O	N	D	J 09	F	M	A	M	J	J	A	S	O	N	D	J 10	F	M	A	M	J	J	A	S	O	N	D	J 11	F	M	A	M
Sale to List Price	0.944	0.892	0.891	0.913	0.869	0.000	0.891	0.713	0.875	0.791	0.771	0.804	0.836	0.927	0.901	0.830	0.898	0.899	0.890	0.854	0.000	0.775	0.888	0.884	0.852	0.883	0.866	0.847	0.859	0.784	0.870	0.953	0.851	0.753	0.828	0.856
3 Mo. Roll Avg			0.909	0.899	0.891	0.594	0.587	0.535	0.826	0.793	0.812	0.789	0.804	0.856	0.888	0.886	0.876	0.876	0.896	0.881	0.581	0.543	0.554	0.849	0.875	0.873	0.867	0.865	0.857	0.830	0.838	0.869	0.891	0.852	0.811	0.812

	J 08	J	A	S	O	N	D	J 09	F	M	A	M	J	J	A	S	O	N	D	J 10	F	M	A	M	J	J	A	S	O	N	D	J 11	F	M	A	M
New Listings	23	46	12	21	19	6	9	26	18	25	25	30	26	30	23	14	19	19	25	20	18	25	26	37	25	18	17	16	14	12	12	13	15	26	26	17
Inventory	136	157	147	149	147	140	131	128	128	140	139	138	143	155	157	147	137	120	130	137	143	147	133	151	142	142	132	126	123	116	114	112	112	125	133	127
Sales	1	9	8	7	6	0	3	3	4	5	5	5	18	8	6	5	5	11	5	5	0	3	8	12	16	15	11	7	9	3	9	3	6	2	6	8

(000's)	J 08	J	A	S	O	N	D	J 09	F	M	A	M	J	J	A	S	O	N	D	J 10	F	M	A	M	J	J	A	S	O	N	D	J 11	F	M	A	M
Avg Sale Price	660	636	564	504	492	0	581	266	400	439	295	379	437	455	765	484	611	465	656	420	0	836	400	454	537	546	462	401	467	353	334	257	648	725	611	548
3 Mo. Roll Avg			620	568	520	332	358	282	416	368	378	371	370	423	552	568	620	520	578	514	359	419	412	563	463	512	515	470	443	407	385	315	413	543	662	628

