

MLS Area: Winnetka



ART WILSON
 Broker, Realtor
 847-363-1599
 Art.Wilson@cbexchange.com



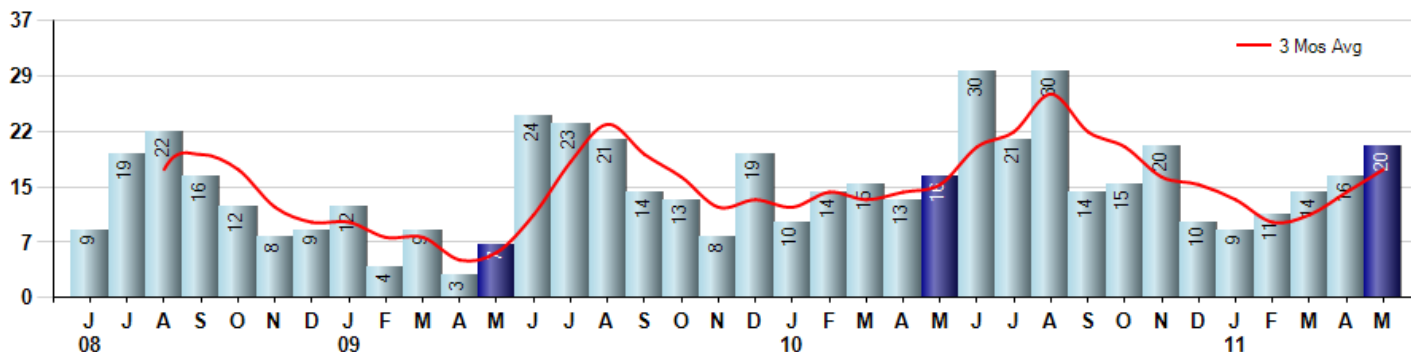
Price Range: ALL | Properties: Single Family Home, Townhome, Condo

Market Profile & Trends Overview	Month	Trending Versus*:				YTD	Trending Versus*:	
		LM	L3M	PYM	LY		PriorYTD	PriorYear
Median List Price of all Current Listings	\$1,397,000	↓		↑				
Average List Price of all Current Listings	\$1,875,219	↔		↓				
May Median Sales Price	\$980,000	↓	↑	↑	↓	\$917,500	↓	↓
May Average Sales Price	\$1,417,400	↓	↑	↑	↑	\$1,268,623	↔	↓
Total Properties Currently for Sale (Inventory)	198	↑		↓				
May Number of Properties Sold	20	↑		↑		70	↑	
May Average Days on Market (Solds)	218	↑	↑	↑	↑	166	↑	↑
May Month's Supply of Inventory	9.9	↓	↓	↓	↓	13.9	↓	↔
May Sale Price vs List Price Ratio	83.2%	↓	↓	↓	↓	85.7%	↑	↑

* LM=Last Month / L3M=Last 3 Months / PYM=Same Month Prior Year / LY=Last Year / YTD = Year-to-date

Property Sales

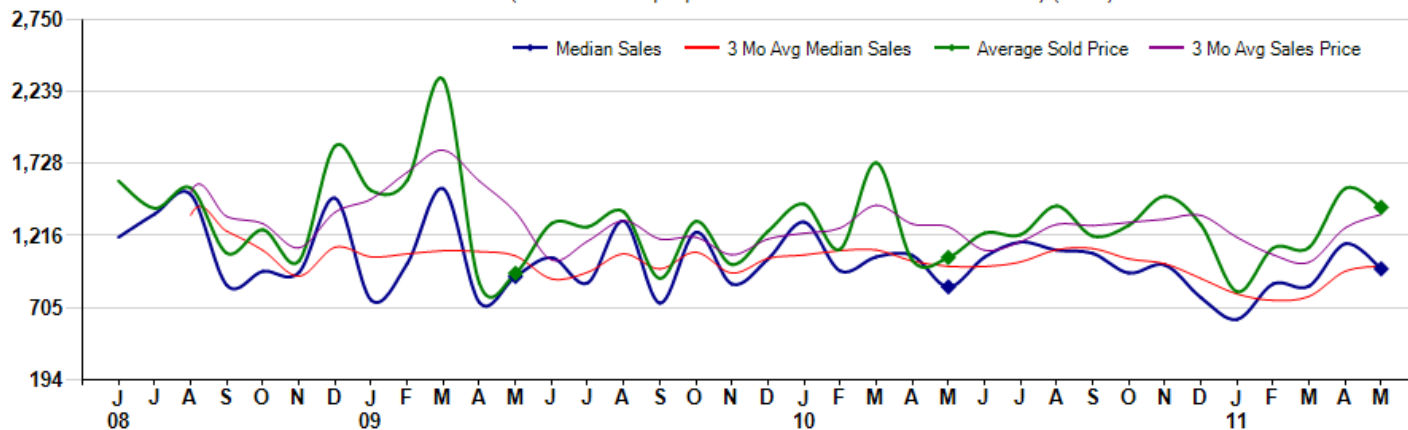
May Property sales were 20, up 25.0% from 16 in May of 2010 and 25.0% higher than the 16 sales last month. May 2011 sales were at their highest level compared to May of 2010 and 2009. May YTD sales of 70 are running 2.9% ahead of last year's year-to-date sales of 68.



Prices

The Median Sales Price in May was \$980,000, up 15.1% from \$851,250 in May of 2010 and down -15.4% from \$1,158,500 last month. The Average Sales Price in May was \$1,417,400, up 33.6% from \$1,060,595 in May of 2010 and down -8.6% from \$1,551,219 last month. May 2011 ASP was at highest level compared to May of 2010 and 2009.

Median means Middle (the same # of properties sold above and below Median) (000's)



Based on information from Midwest Real Estate Data LLC for the period 6/1/2008 through 5/31/2011. Due to MLS reporting methods and allowable reporting policy, this data is only informational and may not be completely accurate. Therefore, Coldwell Banker Residential Brokerage does not guarantee the data accuracy. Data maintained by the MLS's may not reflect all real estate activity in the market.



MLS Area: Winnetka



ART WILSON
 Broker, Realtor
 847-363-1599
 Art.Wilson@cbexchange.com



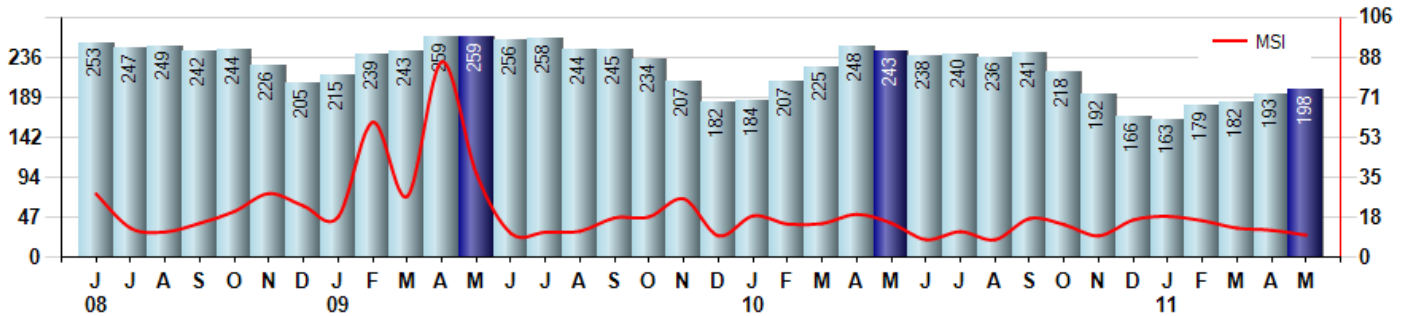
Price Range: ALL | Properties: Single Family Home, Townhome, Condo

Inventory & MSI

The Total Inventory of Properties available for sale as of May was 198, up 2.6% from 193 last month and down -18.5% from 243 in May of last year. May 2011 Inventory was at the lowest level compared to May of 2010 and 2009.

A comparatively lower MSI is more beneficial for sellers while a higher MSI is better for buyers. The May 2011 MSI of 9.9 months was at its lowest level compared with May of 2010 and 2009.

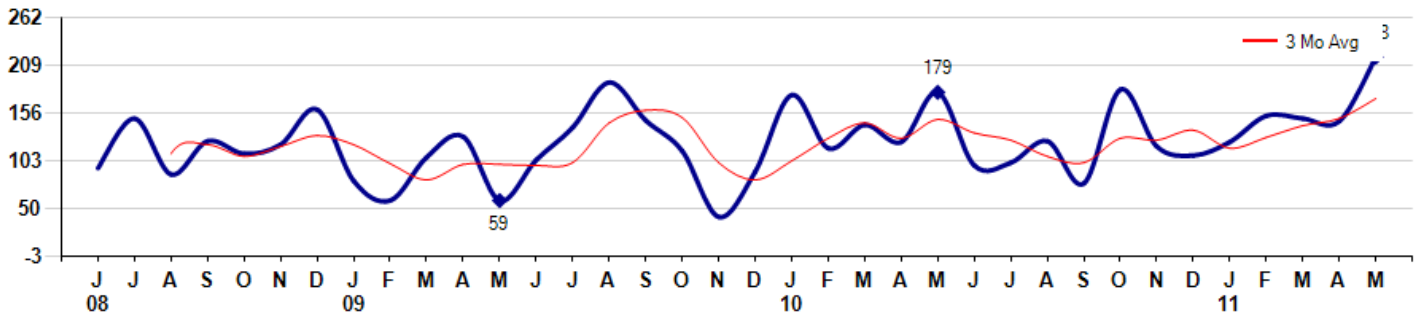
MSI is the # of months needed to sell all of the Inventory at the monthly Sales Pace



Market Time

The average Days On Market (DOM) shows how many days the average Property is on the Market before it sells. An upward trend in DOM tends to indicate a move towards more of a Buyer's market, a downward trend a move towards more of a Seller's market. The DOM for May was 218, up 48.3% from 147 days last month and up 21.8% from 179 days in May of last year. The May 2011 DOM was at its highest level compared with May of 2010 and 2009.

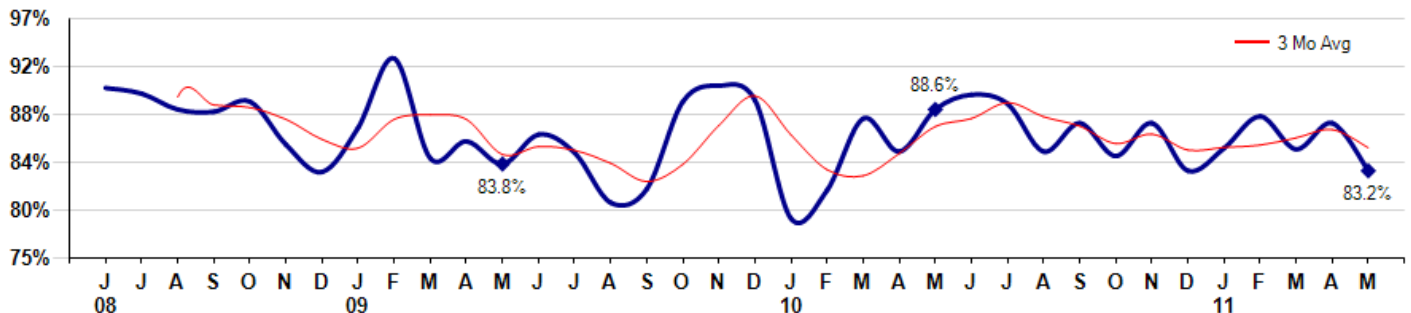
Average Days on Market (Listing to Contract) for properties sold during the month



Selling Price vs Original Listing Price

The Selling Price vs Original Listing Price reveals the average amount that Sellers are agreeing to come down from their original list price. The lower the ratio is below 100% the more of a Buyer's market exists, a ratio at or above 100% indicates more of a Seller's market. The May 2011 Selling Price vs Original List Price of 83.2% was down from 87.4% last month and down from 88.6% in May of last year.

Avg Selling Price divided by Avg Listing Price for sold properties during the month



Based on information from Midwest Real Estate Data LLC for the period 6/1/2008 through 5/31/2011. Due to MLS reporting methods and allowable reporting policy, this data is only informational and may not be completely accurate. Therefore, Coldwell Banker Residential Brokerage does not guarantee the data accuracy. Data maintained by the MLS's may not reflect all real estate activity in the market.



MLS Area: Winnetka



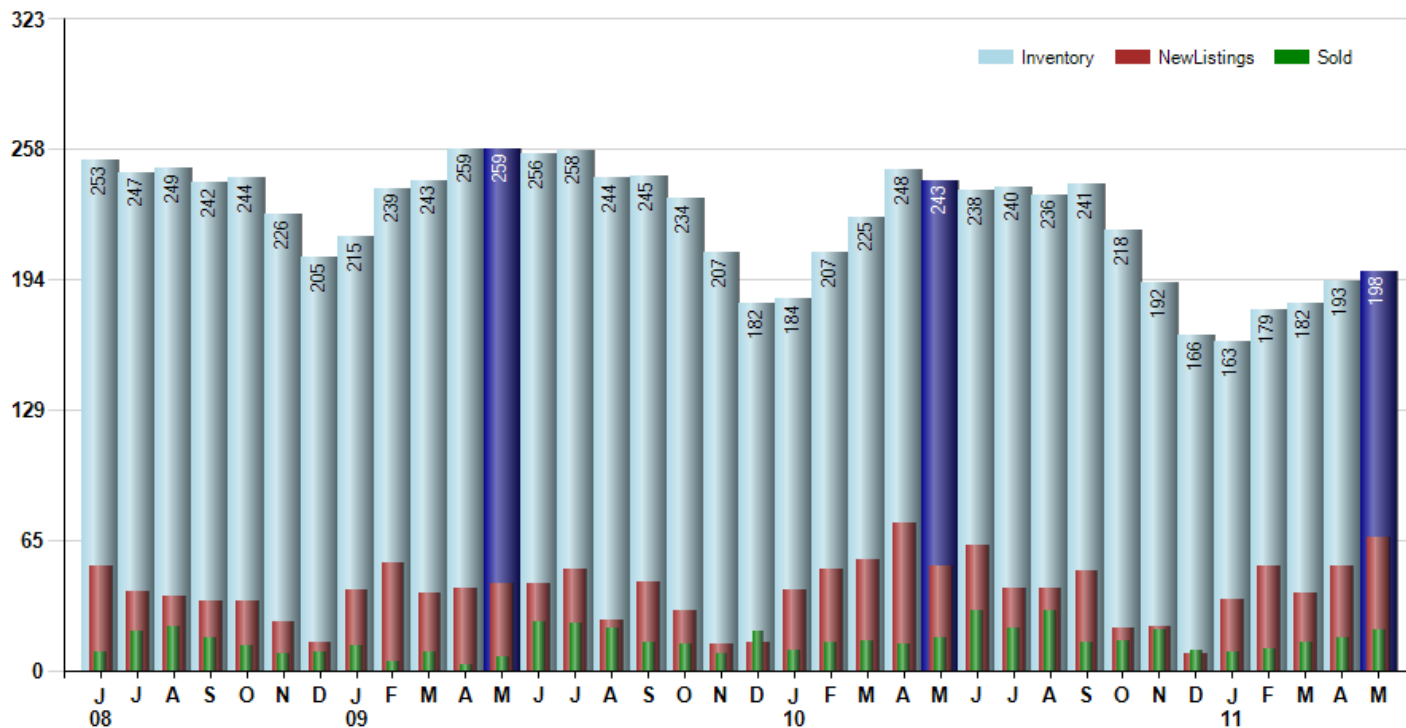
ART WILSON
 Broker, Realtor
 847-363-1599
 Art.Wilson@cbexchange.com



Price Range: ALL | Properties: Single Family Home, Townhome, Condo

Inventory / New Listings / Sales

This last view of the market combines monthly inventory of Properties for sale along with New Listings and Sales. The graph shows the basic annual seasonality of the market as well as the relationship between these items. The number of New Listings in May 2011 was 66, up 26.9% from 52 last month and up 26.9% from 52 in May of last year.



Based on information from Midwest Real Estate Data LLC for the period 6/1/2008 through 5/31/2011. Due to MLS reporting methods and allowable reporting policy, this data is only informational and may not be completely accurate. Therefore, Coldwell Banker Residential Brokerage does not guarantee the data accuracy. Data maintained by the MLS's may not reflect all real estate activity in the market.



MARKET ACTION REPORT

May 2011

MLS Area: Winnetka



ART WILSON
 Broker, Realtor
 847-363-1599
 Art.Wilson@cbexchange.com



Price Range: ALL | Properties: Single Family Home, Townhome, Condo

	J 08	J	A	S	O	N	D	J 09	F	M	A	M	J	J	A	S	O	N	D	J 10	F	M	A	M	J	J	A	S	O	N	D	J 11	F	M	A	M
Homes Sold	9	19	22	16	12	8	9	12	4	9	3	7	24	23	21	14	13	8	19	10	14	15	13	16	30	21	30	14	15	20	10	9	11	14	16	20
3 Mo. Roll Avg			17	19	17	12	10	10	8	8	5	6	11	18	23	19	16	12	13	12	14	13	14	15	20	22	27	22	20	16	15	13	10	11	14	17

(000's)	J 08	J	A	S	O	N	D	J 09	F	M	A	M	J	J	A	S	O	N	D	J 10	F	M	A	M	J	J	A	S	O	N	D	J 11	F	M	A	M
Median Sale Price	1,205	1,370	1,509	863	963	955	1,483	758	1,018	1,550	740	925	1,060	880	1,320	736	1,240	871	1,050	1,313	965	1,065	1,075	851	1,064	1,170	1,113	1,090	950	1,008	775	620	873	858	1,159	980
3 Mo. Roll Avg			1,361	1,247	1,111	927	1,133	1,065	1,086	1,108	1,103	1,072	908	955	1,087	979	1,099	949	1,054	1,078	1,109	1,114	1,035	997	997	1,028	1,115	1,124	1,051	1,016	911	801	756	783	963	999

	J 08	J	A	S	O	N	D	J 09	F	M	A	M	J	J	A	S	O	N	D	J 10	F	M	A	M	J	J	A	S	O	N	D	J 11	F	M	A	M
Inventory	253	247	249	242	244	226	205	215	239	243	259	259	256	258	244	245	234	207	182	184	207	225	248	243	238	240	236	241	218	192	166	163	179	182	193	198
MSI	28	13	11	15	20	28	23	18	60	27	86	37	11	11	12	18	18	26	10	18	15	15	19	15	8	11	8	17	15	10	17	18	16	13	12	10

	J 08	J	A	S	O	N	D	J 09	F	M	A	M	J	J	A	S	O	N	D	J 10	F	M	A	M	J	J	A	S	O	N	D	J 11	F	M	A	M
Days On Market	95	150	88	125	111	121	160	81	59	107	130	59	104	140	190	148	114	41	91	176	117	143	124	179	98	101	125	78	182	119	109	124	153	150	147	218
3 Mo. Roll Avg			111	121	108	119	131	121	100	82	99	99	98	101	145	159	151	101	82	103	128	145	128	149	134	126	108	101	128	126	137	117	129	142	150	172

	J 08	J	A	S	O	N	D	J 09	F	M	A	M	J	J	A	S	O	N	D	J 10	F	M	A	M	J	J	A	S	O	N	D	J 11	F	M	A	M
Price per Sq Ft	369	354	406	456	386	343	0	266	253	517	0	339	316	294	362	234	384	483	343	195	245	416	218	365	282	323	321	339	282	332	242	204	278	263	341	306
3 Mo. Roll Avg			376	405	416	395	243	203	173	345	257	285	218	316	324	297	327	367	403	340	261	285	293	333	288	323	309	328	314	318	285	259	241	248	294	303

	J 08	J	A	S	O	N	D	J 09	F	M	A	M	J	J	A	S	O	N	D	J 10	F	M	A	M	J	J	A	S	O	N	D	J 11	F	M	A	M
Sale to List Price	0.905	0.900	0.886	0.884	0.893	0.855	0.831	0.870	0.931	0.843	0.858	0.838	0.864	0.848	0.804	0.816	0.893	0.907	0.894	0.790	0.815	0.878	0.849	0.886	0.899	0.891	0.849	0.874	0.845	0.874	0.832	0.852	0.880	0.851	0.874	0.832
3 Mo. Roll Avg			0.897	0.890	0.888	0.877	0.860	0.852	0.877	0.881	0.877	0.846	0.853	0.850	0.839	0.823	0.838	0.872	0.898	0.864	0.833	0.828	0.847	0.871	0.878	0.892	0.880	0.871	0.856	0.864	0.850	0.853	0.855	0.861	0.868	0.852

	J 08	J	A	S	O	N	D	J 09	F	M	A	M	J	J	A	S	O	N	D	J 10	F	M	A	M	J	J	A	S	O	N	D	J 11	F	M	A	M
New Listings	52	39	37	34	34	24	14	40	53	38	41	43	43	50	25	44	30	13	14	40	50	55	73	52	62	41	41	49	21	22	8	35	52	38	52	66
Inventory	253	247	249	242	244	226	205	215	239	243	259	259	256	258	244	245	234	207	182	184	207	225	248	243	238	240	236	241	218	192	166	163	179	182	193	198
Sales	9	19	22	16	12	8	9	12	4	9	3	7	24	23	21	14	13	8	19	10	14	15	13	16	30	21	30	14	15	20	10	9	11	14	16	20

(000's)	J 08	J	A	S	O	N	D	J 09	F	M	A	M	J	J	A	S	O	N	D	J 10	F	M	A	M	J	J	A	S	O	N	D	J 11	F	M	A	M
Avg Sale Price	1,604	1,410	1,554	1,091	1,258	1,036	1,853	1,537	1,609	2,324	877	948	1,302	1,278	1,385	911	1,317	1,010	1,247	1,440	1,120	1,735	1,041	1,061	1,234	1,222	1,427	1,213	1,289	1,496	1,294	818	1,129	1,133	1,551	1,417
3 Mo. Roll Avg			1,523	1,352	1,301	1,128	1,382	1,475	1,666	1,823	1,603	1,383	1,042	1,176	1,322	1,192	1,205	1,080	1,192	1,233	1,269	1,432	1,299	1,279	1,112	1,172	1,295	1,287	1,310	1,333	1,360	1,203	1,080	1,026	1,271	1,367

Based on information from Midwest Real Estate Data LLC for the period 6/1/2008 through 5/31/2011. Due to MLS reporting methods and allowable reporting policy, this data is only informational and may not be completely accurate. Therefore, Coldwell Banker Residential Brokerage does not guarantee the data accuracy. Data maintained by the MLS's may not reflect all real estate activity in the market.

