

MLS Area: Highland Park



ART WILSON
 Broker, Realtor
 847-363-1599
 www.NorthShoreHomesOnline.com
 Art.Wilson@cbexchange.com



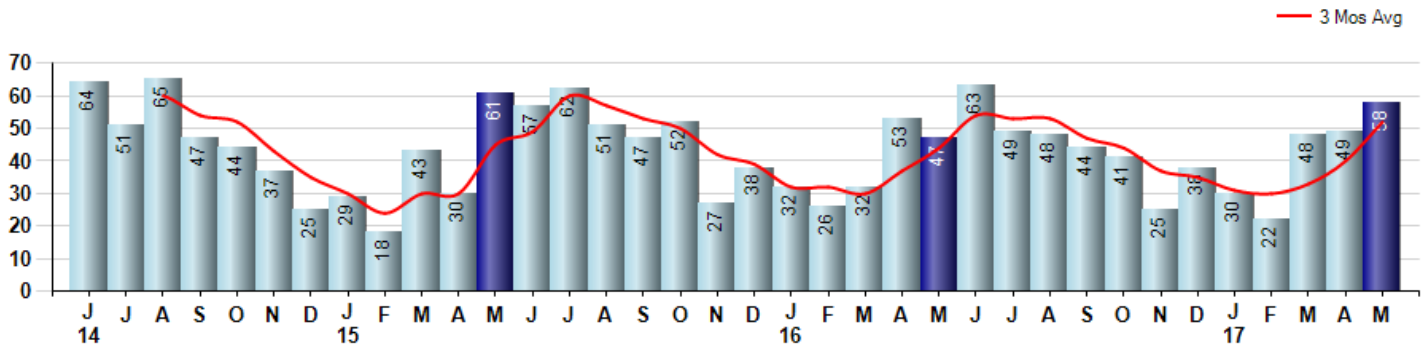
Price Range: 0 to 999999999 | Properties: Single Family Home, Townhome, Condo

Market Profile & Trends Overview	Month	Trending Versus*:				YTD	Trending Versus*:	
		LM	L3M	PYM	LY		PriorYTD	PriorYear
Median List Price of all Current Listings	\$699,450	↔		↓				
Average List Price of all Current Listings	\$962,272	↑		↑				
May Median Sales Price	\$512,500	↑	↑	↓	↑	\$455,000	↓	↓
May Average Sales Price	\$568,243	↓	↑	↓	↓	\$553,452	↓	↓
Total Properties Currently for Sale (Inventory)	362	↑		↑				
May Number of Properties Sold	58	↑		↑		207	↑	
May Average Days on Market (Solds)	69	↓	↓	↓	↓	89	↑	↑
May Month's Supply of Inventory	6.2	↓	↓	↓	↓	8.7	↑	↑
May Sale Price vs List Price Ratio	93.2%	↑	↑	↑	↑	90.7%	↓	↓

* LM=Last Month / L3M=Last 3 Months / PYM=Same Month Prior Year / LY=Last Year / YTD = Year-to-date

Property Sales

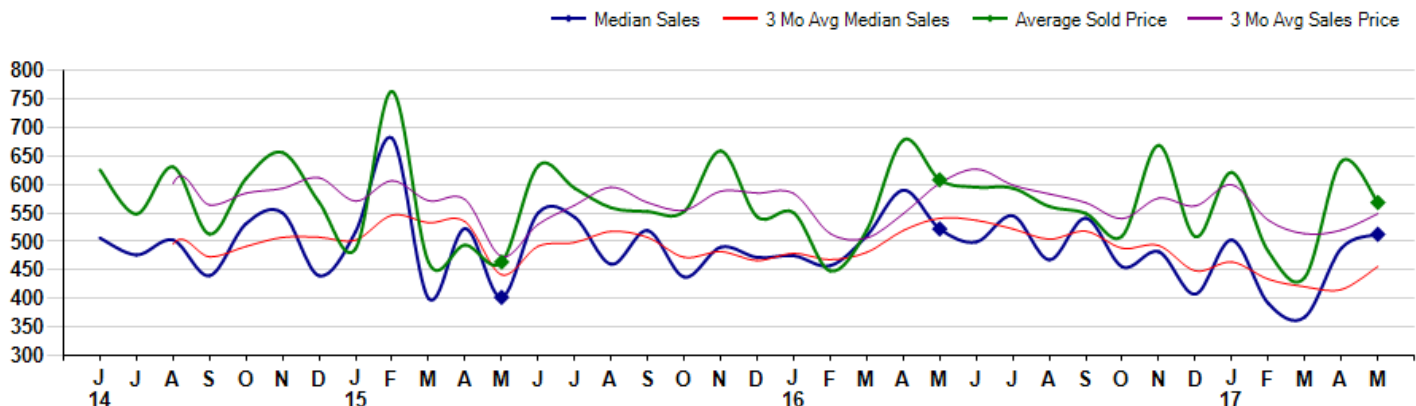
May Property sales were 58, up 23.4% from 47 in May of 2016 and 18.4% higher than the 49 sales last month. May 2017 sales were at a mid level compared to May of 2016 and 2015. May YTD sales of 207 are running 8.9% ahead of last year's year-to-date sales of 190.



Prices

The Median Sales Price in May was \$512,500, down -1.8% from \$522,000 in May of 2016 and up 5.0% from \$488,000 last month. The Average Sales Price in May was \$568,243, down -6.5% from \$608,032 in May of 2016 and down -11.3% from \$640,520 last month. May 2017 ASP was at a mid range compared to May of 2016 and 2015.

Median means Middle (the same # of properties sold above and below Median) (000's)



MLS Area: Highland Park



ART WILSON
 Broker, Realtor
 847-363-1599
 www.NorthShoreHomesOnline.com
 Art.Wilson@cbexchange.com



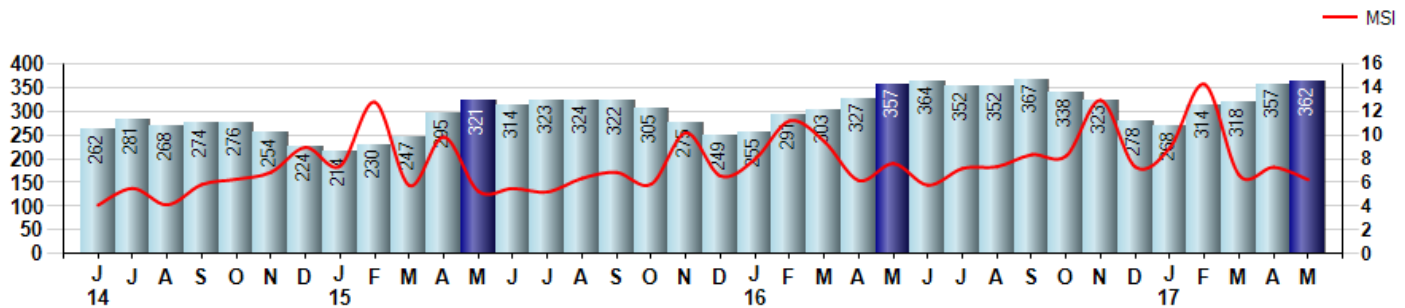
Price Range: 0 to 999999999 | Properties: Single Family Home, Townhome, Condo

Inventory & MSI

The Total Inventory of Properties available for sale as of May was 362, up 1.4% from 357 last month and up 1.4% from 357 in May of last year. May 2017 Inventory was at highest level compared to May of 2016 and 2015.

A comparatively lower MSI is more beneficial for sellers while a higher MSI is better for buyers. The May 2017 MSI of 6.2 months was at a mid range compared with May of 2016 and 2015.

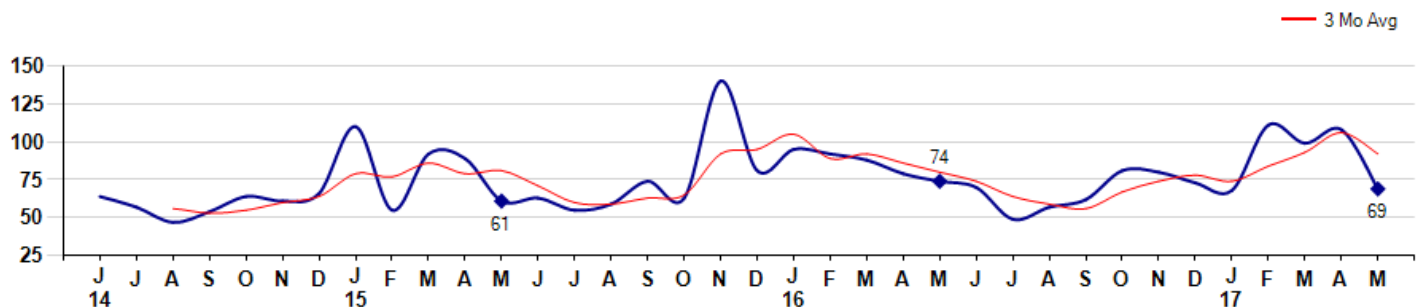
MSI is the # of months needed to sell all of the Inventory at the monthly Sales Pace



Market Time

The average Days On Market(DOM) shows how many days the average Property is on the Market before it sells. An upward trend in DOM tends to indicate a move towards more of a Buyer's market, a downward trend a move towards more of a Seller's market. The DOM for May was 69, down -36.1% from 108 days last month and down -6.8% from 74 days in May of last year. The May 2017 DOM was at a mid range compared with May of 2016 and 2015.

Average Days on Market(Listing to Contract) for properties sold during the month



MLS Area: Highland Park



ART WILSON
 Broker, Realtor
 847-363-1599
www.NorthShoreHomesOnline.com
Art.Wilson@cbexchange.com

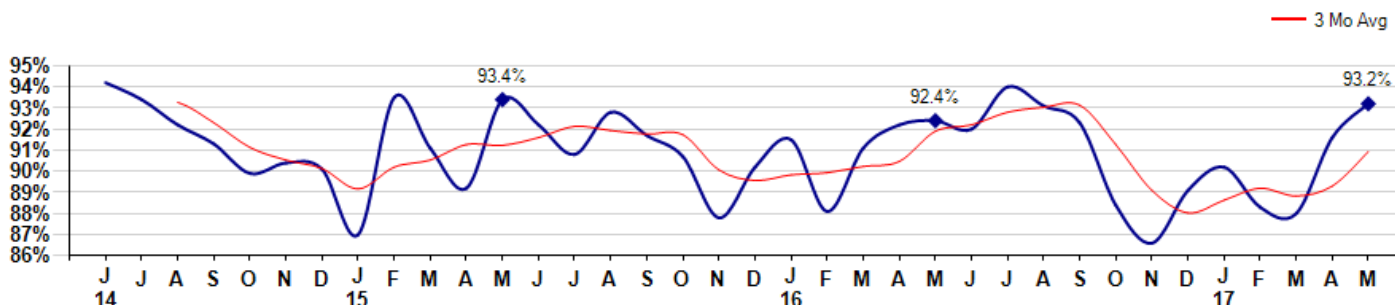


Price Range: 0 to 999999999 | Properties: Single Family Home, Townhome, Condo

Selling Price vs Listing Price

The Selling Price vs Listing Price reveals the average amount that Sellers are agreeing to come down from their list price. The lower the ratio is below 100% the more of a Buyer's market exists, a ratio at or above 100% indicates more of a Seller's market. The May 2017 Selling Price vs List Price of 93.2% was up from 91.6% last month and up from 92.4% in May of last year.

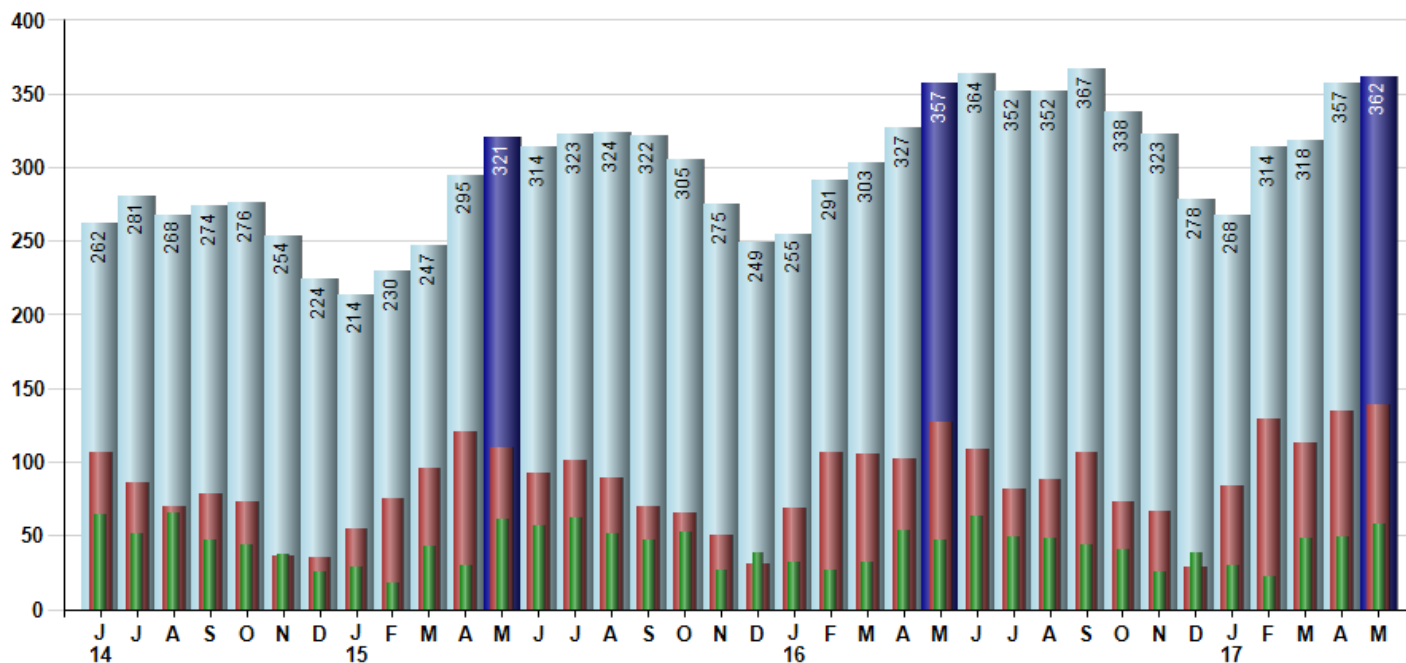
Avg Selling Price divided by Avg Listing Price for sold properties during the month



Inventory / New Listings / Sales

This last view of the market combines monthly inventory of Properties for sale along with New Listings and Sales. The graph shows the basic annual seasonality of the market as well as the relationship between these items. The number of New Listings in May 2017 was 139, up 3.0% from 135 last month and up 9.4% from 127 in May of last year.

Inventory New Listings Sold



© 2017 Coldwell Banker Real Estate LLC. All Rights Reserved. Coldwell Banker Residential Brokerage fully supports the principles of the Fair Housing Act and the Equal Opportunity Act. Coldwell Banker Residential Brokerage is operated by a subsidiary of NRT LLC. Coldwell Banker and the Coldwell Banker Logo are registered service marks owned by Coldwell Banker Real Estate LLC.

Based on information from Midwest Real Estate Data LLC for the period 6/1/2014 through 5/31/2017. Due to MLS reporting methods and allowable reporting policy, this data is only informational and may not be completely accurate. Therefore, Coldwell Banker Residential Brokerage does not guarantee the data accuracy. Data maintained by the MLS's may not reflect all real estate activity in the market.



MARKET ACTION REPORT

May 2017

MLS Area: Highland Park



ART WILSON
 Broker, Realtor
 847-363-1599
 www.NorthShoreHomesOnline.com
 Art.Wilson@cbexchange.com



Price Range: 0 to 999999999 | Properties: Single Family Home, Townhome, Condo

	J 14	J	A	S	O	N	D	J 15	F	M	A	M	J	J	A	S	O	N	D	J 16	F	M	A	M	J	J	A	S	O	N	D	J 17	F	M	A	M
Homes Sold	64	51	65	47	44	37	25	29	18	43	30	61	57	62	51	47	52	27	38	32	26	32	53	47	63	49	48	44	41	25	38	30	22	48	49	58
3 Mo. Roll Avg			60	54	52	43	35	30	24	30	30	45	49	60	57	53	50	42	39	32	32	30	37	44	54	53	53	47	44	37	35	31	30	33	40	52

(000's)	J 14	J	A	S	O	N	D	J 15	F	M	A	M	J	J	A	S	O	N	D	J 16	F	M	A	M	J	J	A	S	O	N	D	J 17	F	M	A	M
Median Sale Price	506	476	503	440	531	550	440	517	681	400	523	402	550	543	460	519	438	490	472	475	458	510	590	522	499	545	468	541	456	482	408	503	391	368	488	513
3 Mo. Roll Avg			495	473	491	507	507	502	546	533	535	442	492	498	518	507	472	482	466	479	468	481	519	541	537	522	504	518	488	493	448	464	434	420	416	456

	J 14	J	A	S	O	N	D	J 15	F	M	A	M	J	J	A	S	O	N	D	J 16	F	M	A	M	J	J	A	S	O	N	D	J 17	F	M	A	M
Inventory	262	281	268	274	276	254	224	214	230	247	295	321	314	323	324	322	305	275	249	255	291	303	327	357	364	352	352	367	338	323	278	268	314	318	357	362
MSI	4	6	4	6	6	7	9	7	13	6	10	5	6	5	6	7	6	10	7	8	11	9	6	8	6	7	7	8	8	13	7	9	14	7	7	6

	J 14	J	A	S	O	N	D	J 15	F	M	A	M	J	J	A	S	O	N	D	J 16	F	M	A	M	J	J	A	S	O	N	D	J 17	F	M	A	M
Days On Market	64	57	47	54	64	61	66	110	55	92	89	61	63	55	59	74	63	140	81	95	92	88	79	74	70	49	57	62	81	80	73	68	111	99	108	69
3 Mo. Roll Avg			56	53	55	60	64	79	77	86	79	81	71	60	59	63	65	92	95	105	89	92	86	80	74	64	59	56	67	74	78	74	84	93	106	92

	J 14	J	A	S	O	N	D	J 15	F	M	A	M	J	J	A	S	O	N	D	J 16	F	M	A	M	J	J	A	S	O	N	D	J 17	F	M	A	M
Price per Sq Ft	218	205	215	208	215	219	220	198	216	199	211	202	222	217	199	215	205	216	204	213	189	199	217	215	215	221	204	198	193	218	190	196	173	189	219	213
3 Mo. Roll Avg			213	209	213	214	218	212	211	204	209	204	212	214	213	210	206	212	208	211	202	200	202	210	216	217	213	208	198	203	200	201	186	186	194	207

	J 14	J	A	S	O	N	D	J 15	F	M	A	M	J	J	A	S	O	N	D	J 16	F	M	A	M	J	J	A	S	O	N	D	J 17	F	M	A	M
Sale to List Price	0.942	0.934	0.922	0.913	0.899	0.904	0.901	0.870	0.935	0.911	0.892	0.934	0.922	0.908	0.928	0.917	0.907	0.878	0.902	0.915	0.881	0.911	0.922	0.924	0.920	0.940	0.931	0.923	0.884	0.866	0.891	0.902	0.883	0.880	0.916	0.932
3 Mo. Roll Avg			0.933	0.923	0.911	0.905	0.901	0.892	0.902	0.905	0.913	0.912	0.916	0.921	0.919	0.918	0.917	0.901	0.896	0.898	0.899	0.902	0.905	0.919	0.922	0.928	0.930	0.931	0.913	0.891	0.880	0.886	0.892	0.888	0.893	0.909

	J 14	J	A	S	O	N	D	J 15	F	M	A	M	J	J	A	S	O	N	D	J 16	F	M	A	M	J	J	A	S	O	N	D	J 17	F	M	A	M
New Listings	107	86	70	78	73	36	35	55	75	96	121	110	92	101	89	70	65	50	31	69	106	105	102	127	109	82	88	107	73	67	29	84	129	113	135	139
Inventory	262	281	268	274	276	254	224	214	230	247	295	321	314	323	324	322	305	275	249	255	291	303	327	357	364	352	352	367	338	323	278	268	314	318	357	362
Sales	64	51	65	47	44	37	25	29	18	43	30	61	57	62	51	47	52	27	38	32	26	32	53	47	63	49	48	44	41	25	38	30	22	48	49	58

(000's)	J 14	J	A	S	O	N	D	J 15	F	M	A	M	J	J	A	S	O	N	D	J 16	F	M	A	M	J	J	A	S	O	N	D	J 17	F	M	A	M
Avg Sale Price	625	548	631	513	610	656	569	487	763	463	494	464	633	593	559	552	553	659	543	550	448	520	678	608	595	594	561	549	510	669	508	621	482	437	641	568
3 Mo. Roll Avg			601	564	585	593	612	571	607	571	573	474	530	563	595	568	555	588	585	584	514	506	549	602	627	599	583	568	540	576	562	599	537	513	520	549

© 2017 Coldwell Banker Real Estate LLC. All Rights Reserved. Coldwell Banker Residential Brokerage fully supports the principles of the Fair Housing Act and the Equal Opportunity Act. Coldwell Banker Residential Brokerage is operated by a subsidiary of NRT LLC. Coldwell Banker and the Coldwell Banker Logo are registered service marks owned by Coldwell Banker Real Estate LLC.

Based on information from Midwest Real Estate Data LLC for the period 6/1/2014 through 5/31/2017. Due to MLS reporting methods and allowable reporting policy, this data is only informational and may not be completely accurate. Therefore, Coldwell Banker Residential Brokerage does not guarantee the data accuracy. Data maintained by the MLS's may not reflect all real estate activity in the market.

