

MLS Area: Lake Forest



ART WILSON
 Broker, Realtor
 847-363-1599
 www.NorthShoreHomesOnline.com
 Art.Wilson@cbexchange.com



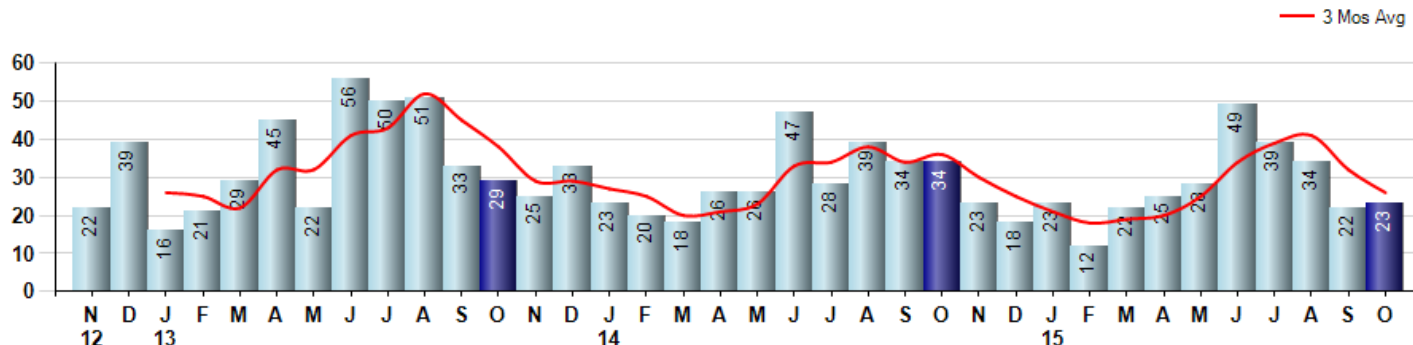
Price Range: \$0 to \$999,999,000 | Properties: Single Family Home, Townhome, Condo

Market Profile & Trends Overview	Month	Trending Versus*:				YTD	Trending Versus*:	
		LM	L3M	PYM	LY		PriorYTD	PriorYear
Median List Price of all Current Listings	\$1,199,000	↔		↓				
Average List Price of all Current Listings	\$1,675,946	↔		↓				
October Median Sales Price	\$752,500	↓	↓	↓	↑	\$732,500	↓	↑
October Average Sales Price	\$1,013,702	↔	↑	↑	↑	\$892,815	↓	↓
Total Properties Currently for Sale (Inventory)	329	↔		↑				
October Number of Properties Sold	23	↑		↓		277	↓	
October Average Days on Market (Solds)	85	↓	↑	↓	↓	86	↑	↓
October Month's Supply of Inventory	14.3	↓	↑	↑	↑	11.7	↑	↑
October Sale Price vs List Price Ratio	91.7%	↓	↔	↓	↓	92.8%	↔	↔

* LM=Last Month / L3M=Last 3 Months / PYM=Same Month Prior Year / LY=Last Year / YTD = Year-to-date

Property Sales

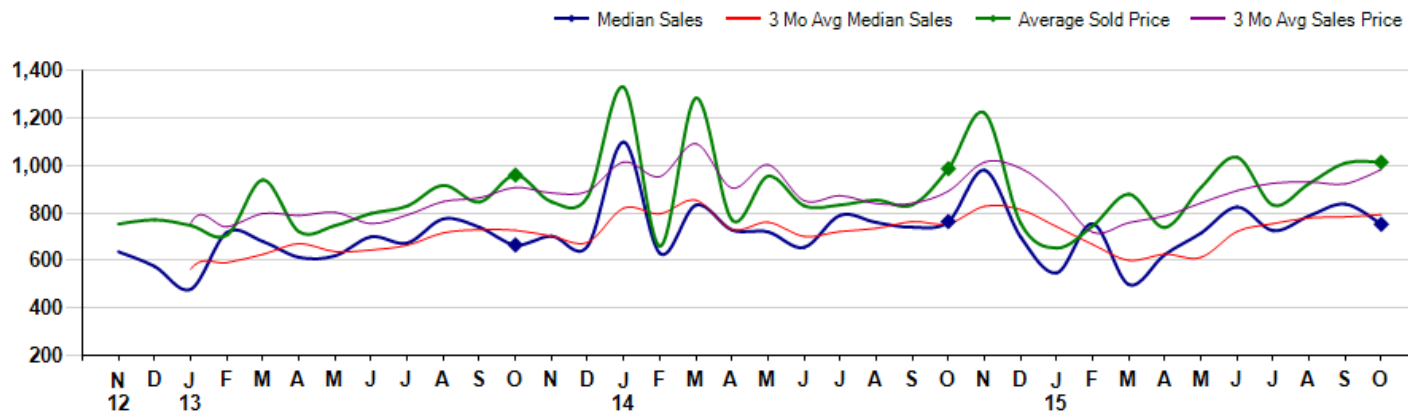
October Property sales were 23, down -32.4% from 34 in October of 2014 and 4.5% higher than the 22 sales last month. October 2015 sales were at their lowest level compared to October of 2014 and 2013. October YTD sales of 277 are running -6.1% behind last year's year-to-date sales of 295.



Prices

The Median Sales Price in October was \$752,500, down -1.5% from \$763,750 in October of 2014 and down -10.1% from \$837,500 last month. The Average Sales Price in October was \$1,013,702, up 2.7% from \$986,637 in October of 2014 and up 0.3% from \$1,010,227 last month. October 2015 ASP was at highest level compared to October of 2014 and 2013.

Median means Middle (the same # of properties sold above and below Median) (000's)



© 2015 Coldwell Banker Real Estate LLC. All Rights Reserved. Coldwell Banker Residential Brokerage fully supports the principles of the Fair Housing Act and the Equal Opportunity Act. Coldwell Banker Residential Brokerage is operated by a subsidiary of NRT LLC. Coldwell Banker and the Coldwell Banker Logo are registered service marks owned by Coldwell Banker Real Estate LLC.

Based on information from Midwest Real Estate Data LLC for the period 11/1/2012 through 10/31/2015. Due to MLS reporting methods and allowable reporting policy, this data is only informational and may not be completely accurate. Therefore, Coldwell Banker Residential Brokerage does not guarantee the data accuracy. Data maintained by the MLS's may not reflect all real estate activity in the market.



MLS Area: Lake Forest



ART WILSON
 Broker, Realtor
 847-363-1599
 www.NorthShoreHomesOnline.com
 Art.Wilson@cbexchange.com



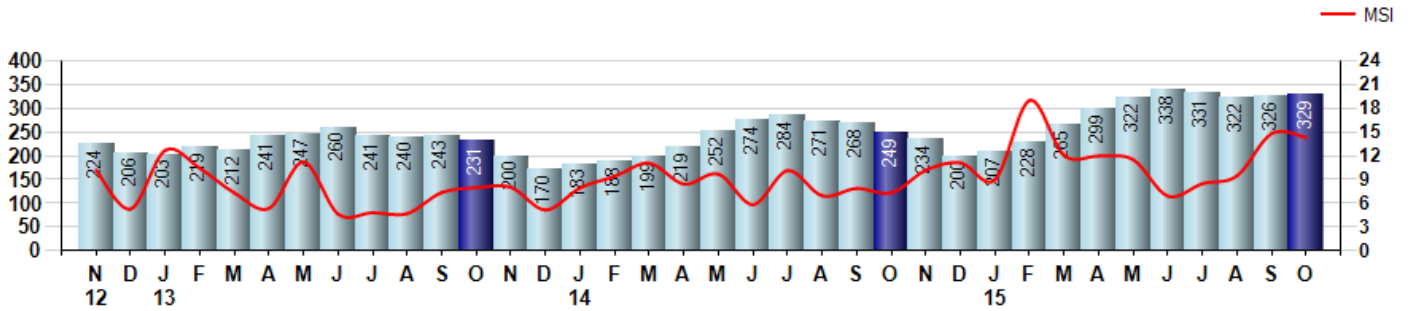
Price Range: \$0 to \$999,999,000 | Properties: Single Family Home, Townhome, Condo

Inventory & MSI

The Total Inventory of Properties available for sale as of October was 329, up 0.9% from 326 last month and up 32.1% from 249 in October of last year. October 2015 Inventory was at highest level compared to October of 2014 and 2013.

A comparatively lower MSI is more beneficial for sellers while a higher MSI is better for buyers. The October 2015 MSI of 14.3 months was at its highest level compared with October of 2014 and 2013.

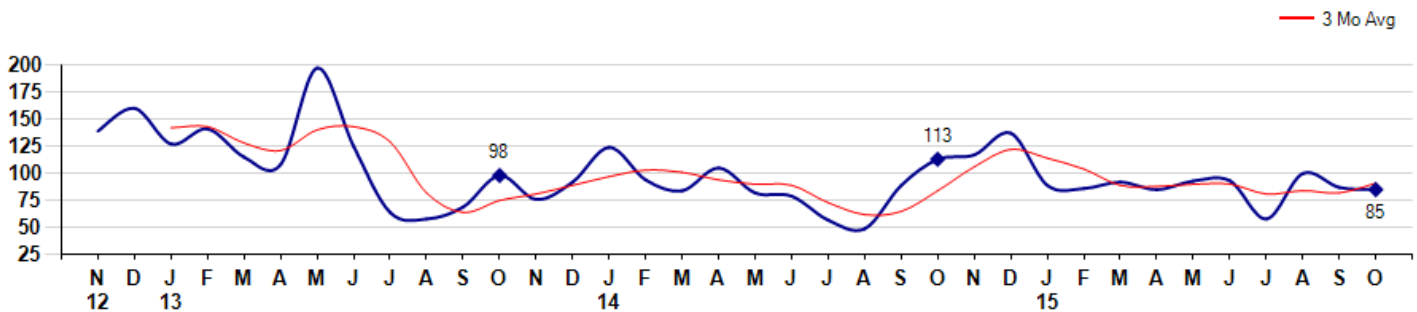
MSI is the # of months needed to sell all of the Inventory at the monthly Sales Pace



Market Time

The average Days On Market(DOM) shows how many days the average Property is on the Market before it sells. An upward trend in DOM tends to indicate a move towards more of a Buyer's market, a downward trend a move towards more of a Seller's market. The DOM for October was 85, down -2.3% from 87 days last month and down -24.8% from 113 days in October of last year. The October 2015 DOM was at its lowest level compared with October of 2014 and 2013.

Average Days on Market(Listing to Contract) for properties sold during the month



MLS Area: Lake Forest



ART WILSON

Broker, Realtor

847-363-1599

www.NorthShoreHomesOnline.com

Art.Wilson@cbexchange.com

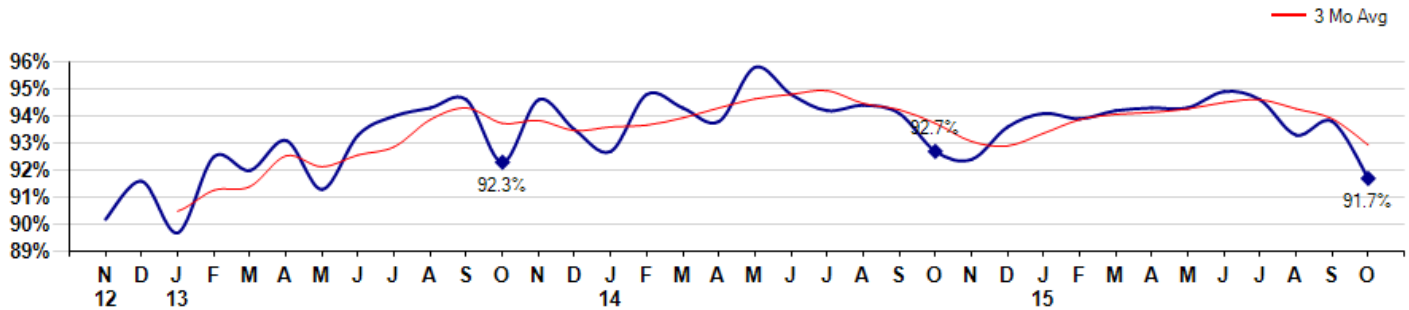


Price Range: \$0 to \$999,999,000 | Properties: Single Family Home, Townhome, Condo

Selling Price vs Listing Price

The Selling Price vs Listing Price reveals the average amount that Sellers are agreeing to come down from their list price. The lower the ratio is below 100% the more of a Buyer's market exists, a ratio at or above 100% indicates more of a Seller's market. The October 2015 Selling Price vs List Price of 91.7% was down from 93.8% last month and down from 92.7% in October of last year.

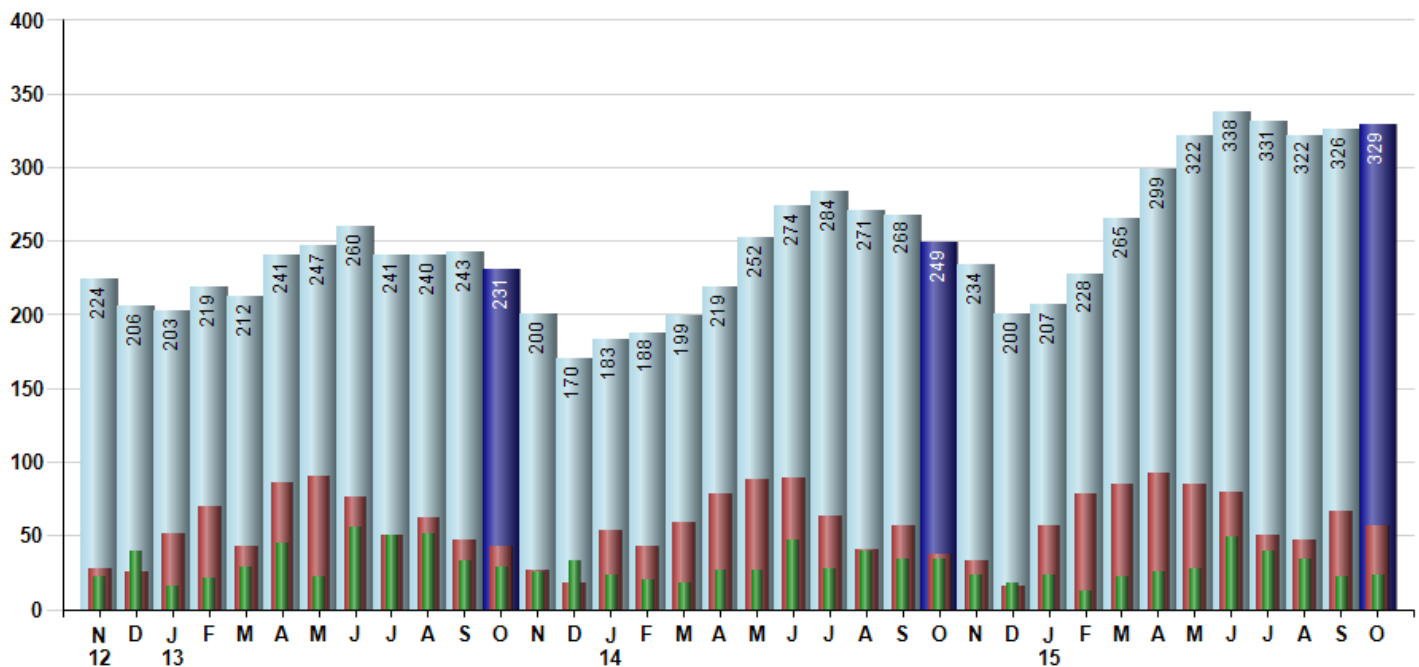
Avg Selling Price divided by Avg Listing Price for sold properties during the month



Inventory / New Listings / Sales

This last view of the market combines monthly inventory of Properties for sale along with New Listings and Sales. The graph shows the basic annual seasonality of the market as well as the relationship between these items. The number of New Listings in October 2015 was 57, down -14.9% from 67 last month and up 54.1% from 37 in October of last year.

Inventory (light blue), New Listings (red), Sold (green)



© 2015 Coldwell Banker Real Estate LLC. All Rights Reserved. Coldwell Banker Residential Brokerage fully supports the principles of the Fair Housing Act and the Equal Opportunity Act. Coldwell Banker Residential Brokerage is operated by a subsidiary of NRT LLC. Coldwell Banker and the Coldwell Banker Logo are registered service marks owned by Coldwell Banker Real Estate LLC.

Based on information from Midwest Real Estate Data LLC for the period 11/1/2012 through 10/31/2015. Due to MLS reporting methods and allowable reporting policy, this data is only informational and may not be completely accurate. Therefore, Coldwell Banker Residential Brokerage does not guarantee the data accuracy. Data maintained by the MLS's may not reflect all real estate activity in the market.



MLS Area: Lake Forest



ART WILSON
 Broker, Realtor
 847-363-1599
 www.NorthShoreHomesOnline.com
 Art.Wilson@cbexchange.com



Price Range: \$0 to \$999,999,000 | Properties: Single Family Home, Townhome, Condo

	N 12	D	J 13	F	M	A	M	J	J	A	S	O	N	D	J 14	F	M	A	M	J	J	A	S	O	N	D	J 15	F	M	A	M	J	J	A	S	O
Homes Sold	22	39	16	21	29	45	22	56	50	51	33	29	25	33	23	20	18	26	26	47	28	39	34	34	23	18	23	12	22	25	28	49	39	34	22	23
3 Mo. Roll Avg			26	25	22	32	32	41	43	52	45	38	29	29	27	25	20	21	23	33	34	38	34	36	30	25	21	18	19	20	25	34	39	41	32	26

	(000's) N 12	D	J 13	F	M	A	M	J	J	A	S	O	N	D	J 14	F	M	A	M	J	J	A	S	O	N	D	J 15	F	M	A	M	J	J	A	S	O
Median Sale Price	637	575	479	718	680	613	619	700	674	775	740	665	703	660	1,099	630	833	729	720	655	790	760	740	764	980	699	548	755	499	625	715	825	725	788	838	753
3 Mo. Roll Avg			563	591	626	670	637	644	664	716	730	727	703	676	821	796	854	731	761	701	722	735	763	755	828	814	742	667	600	626	613	722	755	779	783	793

	N 12	D	J 13	F	M	A	M	J	J	A	S	O	N	D	J 14	F	M	A	M	J	J	A	S	O	N	D	J 15	F	M	A	M	J	J	A	S	O
Inventory	224	206	203	219	212	241	247	260	241	240	243	231	200	170	183	188	199	219	252	274	284	271	268	249	234	200	207	228	265	299	322	338	331	322	326	329
MSI	10	5	13	10	7	5	11	5	5	5	7	8	8	5	8	9	11	8	10	6	10	7	8	7	10	11	9	19	12	12	12	7	8	9	15	14

	N 12	D	J 13	F	M	A	M	J	J	A	S	O	N	D	J 14	F	M	A	M	J	J	A	S	O	N	D	J 15	F	M	A	M	J	J	A	S	O
Days On Market	139	160	127	141	115	108	197	125	64	58	69	98	76	92	124	94	84	105	82	79	57	49	89	113	117	137	89	86	92	85	93	93	58	100	87	85
3 Mo. Roll Avg			142	143	128	121	140	143	129	82	64	75	81	89	97	103	101	94	90	89	73	62	65	84	106	122	114	104	89	88	90	90	81	84	82	91

	N 12	D	J 13	F	M	A	M	J	J	A	S	O	N	D	J 14	F	M	A	M	J	J	A	S	O	N	D	J 15	F	M	A	M	J	J	A	S	O
Price per Sq Ft	206	212	202	208	248	211	226	241	247	258	247	267	241	262	288	229	285	241	288	256	258	262	275	271	275	266	223	228	242	242	273	276	265	251	246	274
3 Mo. Roll Avg			207	207	219	222	228	226	238	249	251	257	252	257	264	260	267	252	271	262	267	259	265	269	274	271	255	239	231	237	252	264	271	264	254	257

	N 12	D	J 13	F	M	A	M	J	J	A	S	O	N	D	J 14	F	M	A	M	J	J	A	S	O	N	D	J 15	F	M	A	M	J	J	A	S	O
Sale to List Price	0.902	0.916	0.897	0.925	0.920	0.931	0.913	0.933	0.940	0.943	0.946	0.923	0.946	0.935	0.927	0.948	0.943	0.938	0.958	0.948	0.942	0.944	0.941	0.927	0.924	0.936	0.941	0.939	0.942	0.943	0.943	0.949	0.946	0.933	0.938	0.917
3 Mo. Roll Avg			0.905	0.913	0.914	0.925	0.921	0.926	0.929	0.939	0.943	0.937	0.938	0.935	0.936	0.937	0.939	0.943	0.946	0.948	0.949	0.945	0.942	0.937	0.931	0.929	0.934	0.939	0.941	0.941	0.943	0.945	0.946	0.943	0.939	0.929

	N 12	D	J 13	F	M	A	M	J	J	A	S	O	N	D	J 14	F	M	A	M	J	J	A	S	O	N	D	J 15	F	M	A	M	J	J	A	S	O
New Listings	28	25	51	70	43	86	90	76	50	62	47	43	27	18	53	43	59	78	88	89	63	40	57	37	33	16	57	78	85	92	85	79	50	47	67	57
Inventory	224	206	203	219	212	241	247	260	241	240	243	231	200	170	183	188	199	219	252	274	284	271	268	249	234	200	207	228	265	299	322	338	331	322	326	329
Sales	22	39	16	21	29	45	22	56	50	51	33	29	25	33	23	20	18	26	26	47	28	39	34	34	23	18	23	12	22	25	28	49	39	34	22	23

	(000's) N 12	D	J 13	F	M	A	M	J	J	A	S	O	N	D	J 14	F	M	A	M	J	J	A	S	O	N	D	J 15	F	M	A	M	J	J	A	S	O
Avg Sale Price	754	771	748	706	939	721	747	798	829	917	846	959	847	868	1,330	660	1,284	771	954	830	834	854	834	987	1,221	757	652	745	879	739	907	1,035	833	924	1,010	1,014
3 Mo. Roll Avg			757	742	798	789	802	755	791	848	864	907	884	891	1,015	953	1,091	905	1,003	852	873	839	841	892	1,014	988	877	718	759	788	842	894	925	931	922	983

© 2015 Coldwell Banker Real Estate LLC. All Rights Reserved. Coldwell Banker Residential Brokerage fully supports the principles of the Fair Housing Act and the Equal Opportunity Act. Coldwell Banker Residential Brokerage is operated by a subsidiary of NRT LLC. Coldwell Banker and the Coldwell Banker Logo are registered service marks owned by Coldwell Banker Real Estate LLC.

Based on information from Midwest Real Estate Data LLC for the period 11/1/2012 through 10/31/2015. Due to MLS reporting methods and allowable reporting policy, this data is only informational and may not be completely accurate. Therefore, Coldwell Banker Residential Brokerage does not guarantee the data accuracy. Data maintained by the MLS's may not reflect all real estate activity in the market.

