

## MLS Area: Northbrook



**ART WILSON**

Broker, Realtor

847-363-1599

www.NorthShoreHomesOnline.com

Art.Wilson@cbexchange.com



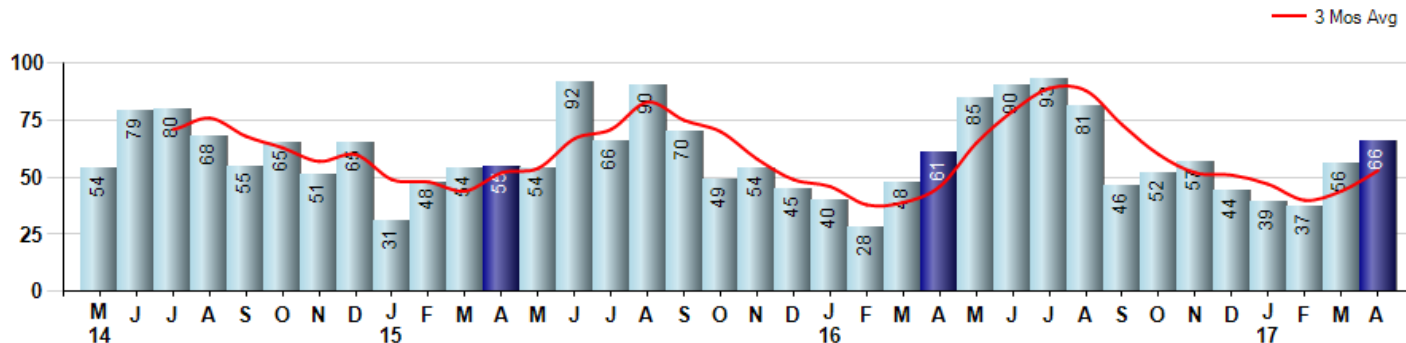
Price Range: 0 to 999999999 | Properties: Single Family Home, Townhome, Condo

Market Profile & Trends Overview	Month	Trending Versus*:				YTD	Trending Versus*:	
		LM	L3M	PYM	LY		PriorYTD	PriorYear
Median List Price of all Current Listings	\$625,000	↓		↑				
Average List Price of all Current Listings	\$764,336	↓		↑				
April Median Sales Price	\$418,750	↓	↓	↔	↓	\$427,500	↑	↔
April Average Sales Price	\$461,786	↓	↓	↓	↓	\$496,498	↑	↑
Total Properties Currently for Sale (Inventory)	315	↑		↑				
April Number of Properties Sold	66	↑		↑		198	↑	
April Average Days on Market (Solds)	45	↓	↓	↓	↓	63	↑	↑
April Month's Supply of Inventory	4.8	↓	↓	↓	↓	6.0	↓	↑
April Sale Price vs List Price Ratio	94.4%	↑	↑	↑	↑	93.1%	↔	↓

\* LM=Last Month / L3M=Last 3 Months / PYM=Same Month Prior Year / LY=Last Year / YTD = Year-to-date

### Property Sales

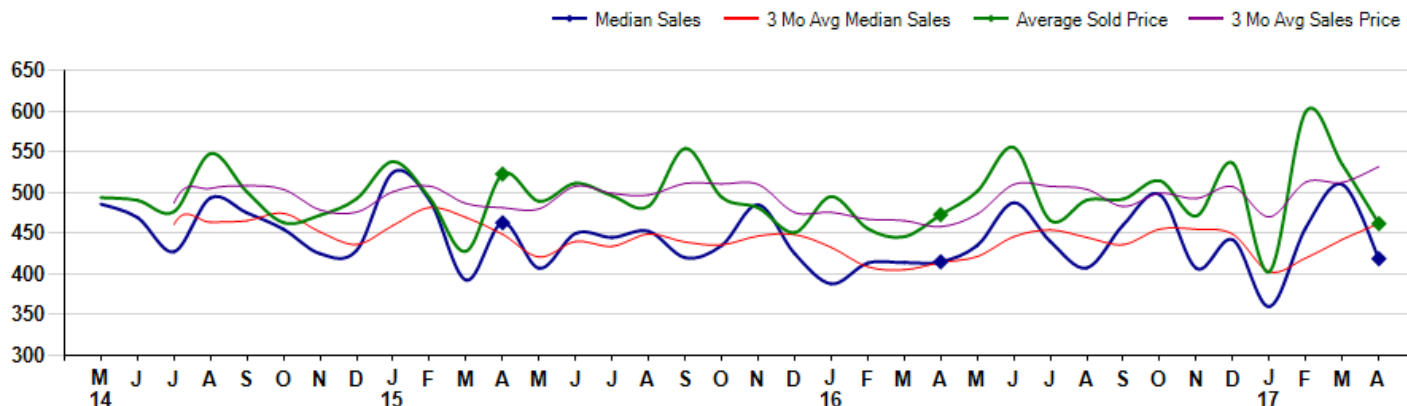
April Property sales were 66, up 8.2% from 61 in April of 2016 and 17.9% higher than the 56 sales last month. April 2017 sales were at their highest level compared to April of 2016 and 2015. April YTD sales of 198 are running 11.9% ahead of last year's year-to-date sales of 177.



### Prices

The Median Sales Price in April was \$418,750, up 0.9% from \$415,000 in April of 2016 and down -17.9% from \$510,000 last month. The Average Sales Price in April was \$461,786, down -2.3% from \$472,892 in April of 2016 and down -13.6% from \$534,457 last month. April 2017 ASP was at the lowest level compared to April of 2016 and 2015.

Median means Middle (the same # of properties sold above and below Median) (000's)



© 2017 Coldwell Banker Real Estate LLC. All Rights Reserved. Coldwell Banker Residential Brokerage fully supports the principles of the Fair Housing Act and the Equal Opportunity Act. Coldwell Banker Residential Brokerage is operated by a subsidiary of NRT LLC. Coldwell Banker and the Coldwell Banker Logo are registered service marks owned by Coldwell Banker Real Estate LLC.

Based on information from Midwest Real Estate Data LLC for the period 5/1/2014 through 4/30/2017. Due to MLS reporting methods and allowable reporting policy, this data is only informational and may not be completely accurate. Therefore, Coldwell Banker Residential Brokerage does not guarantee the data accuracy. Data maintained by the MLS's may not reflect all real estate activity in the market.



## MLS Area: Northbrook



**ART WILSON**  
 Broker, Realtor  
 847-363-1599  
 www.NorthShoreHomesOnline.com  
 Art.Wilson@cbexchange.com



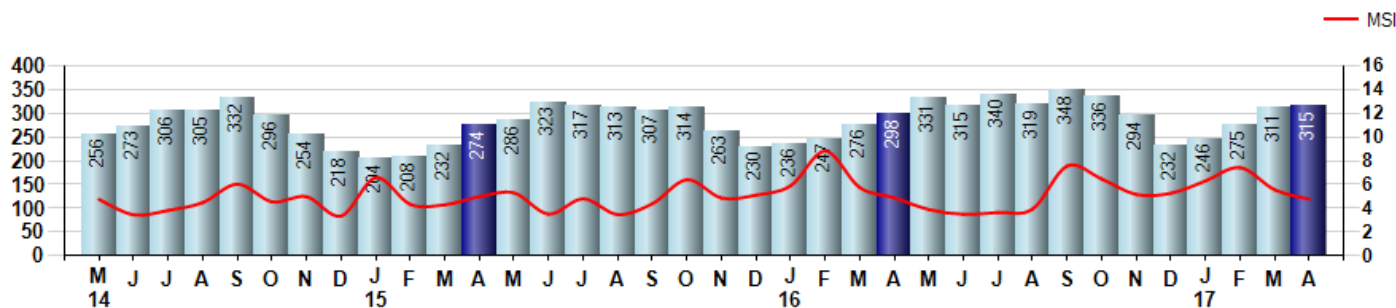
Price Range: 0 to 999999999 | Properties: Single Family Home, Townhome, Condo

### Inventory & MSI

The Total Inventory of Properties available for sale as of April was 315, up 1.3% from 311 last month and up 5.7% from 298 in April of last year. April 2017 Inventory was at highest level compared to April of 2016 and 2015.

A comparatively lower MSI is more beneficial for sellers while a higher MSI is better for buyers. The April 2017 MSI of 4.8 months was at its lowest level compared with April of 2016 and 2015.

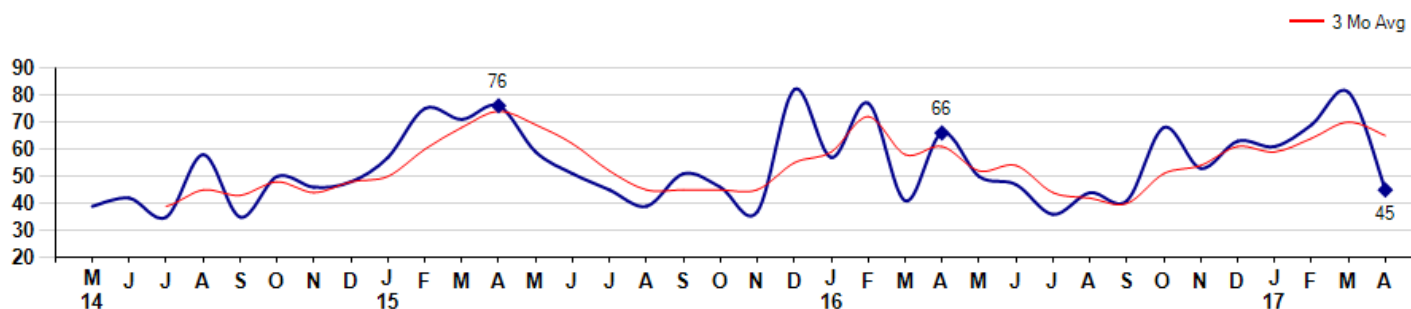
MSI is the # of months needed to sell all of the Inventory at the monthly Sales Pace



### Market Time

The average Days On Market(DOM) shows how many days the average Property is on the Market before it sells. An upward trend in DOM tends to indicate a move towards more of a Buyer's market, a downward trend a move towards more of a Seller's market. The DOM for April was 45, down -44.4% from 81 days last month and down -31.8% from 66 days in April of last year. The April 2017 DOM was at its lowest level compared with April of 2016 and 2015.

Average Days on Market(Listing to Contract) for properties sold during the month



## MLS Area: Northbrook



**ART WILSON**  
 Broker, Realtor  
 847-363-1599  
[www.NorthShoreHomesOnline.com](http://www.NorthShoreHomesOnline.com)  
[Art.Wilson@cbexchange.com](mailto:Art.Wilson@cbexchange.com)

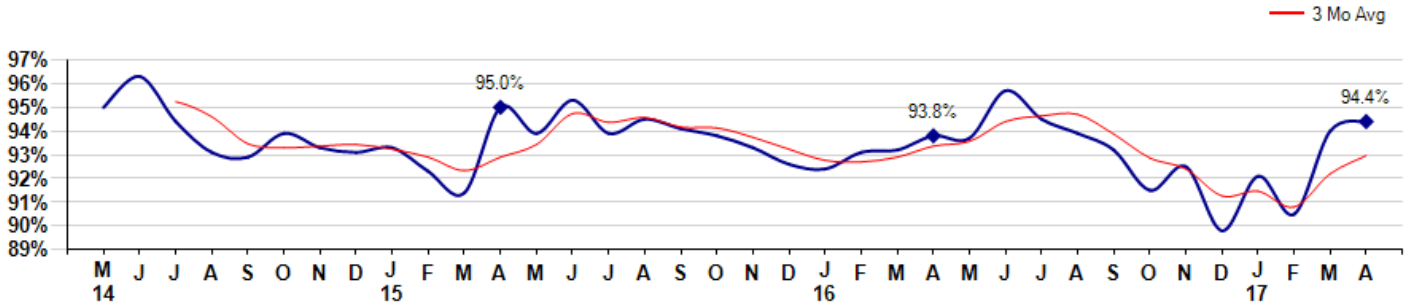


Price Range: 0 to 999999999 | Properties: Single Family Home, Townhome, Condo

### Selling Price vs Listing Price

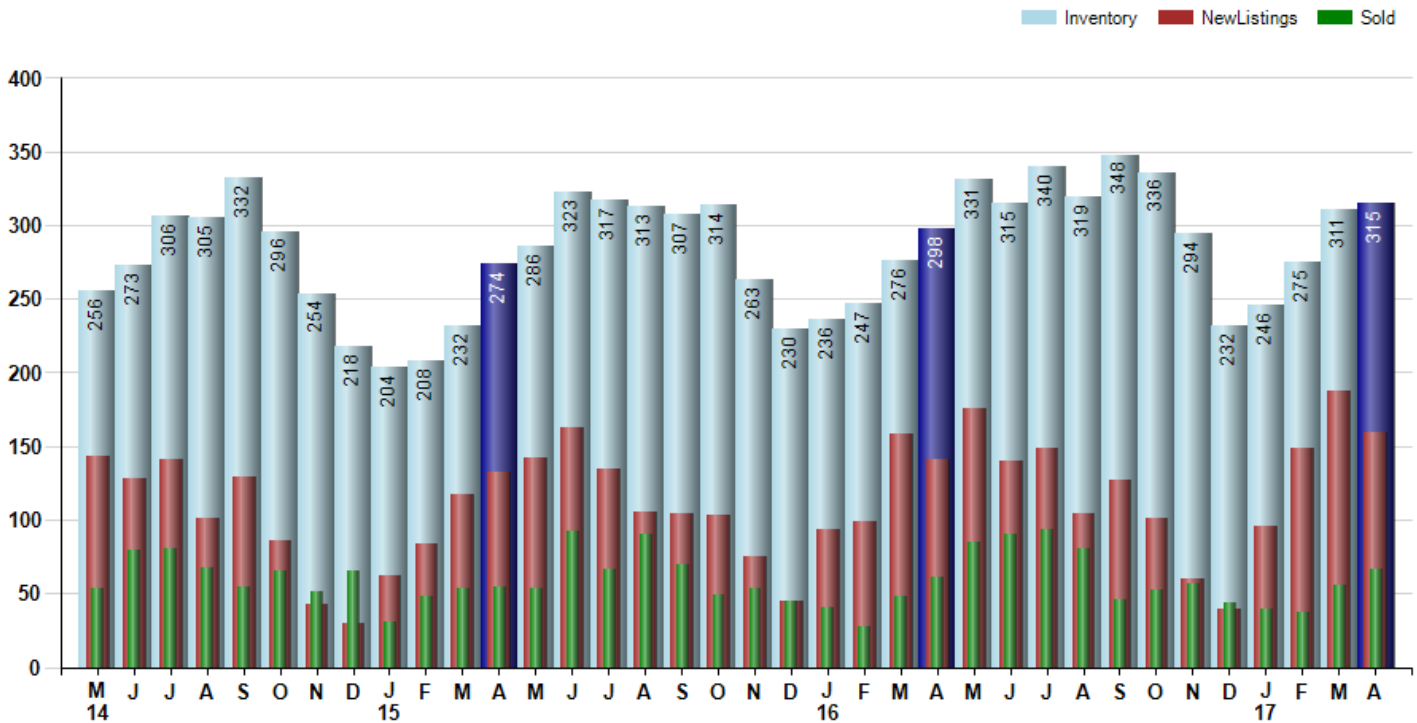
The Selling Price vs Listing Price reveals the average amount that Sellers are agreeing to come down from their list price. The lower the ratio is below 100% the more of a Buyer's market exists, a ratio at or above 100% indicates more of a Seller's market. The April 2017 Selling Price vs List Price of 94.4% was up from 94.0% last month and up from 93.8% in April of last year.

Avg Selling Price divided by Avg Listing Price for sold properties during the month



### Inventory / New Listings / Sales

This last view of the market combines monthly inventory of Properties for sale along with New Listings and Sales. The graph shows the basic annual seasonality of the market as well as the relationship between these items. The number of New Listings in April 2017 was 159, down -15.0% from 187 last month and up 12.8% from 141 in April of last year.



© 2017 Coldwell Banker Real Estate LLC. All Rights Reserved. Coldwell Banker Residential Brokerage fully supports the principles of the Fair Housing Act and the Equal Opportunity Act. Coldwell Banker Residential Brokerage is operated by a subsidiary of NRT LLC. Coldwell Banker and the Coldwell Banker Logo are registered service marks owned by Coldwell Banker Real Estate LLC.

Based on information from Midwest Real Estate Data LLC for the period 5/1/2014 through 4/30/2017. Due to MLS reporting methods and allowable reporting policy, this data is only informational and may not be completely accurate. Therefore, Coldwell Banker Residential Brokerage does not guarantee the data accuracy. Data maintained by the MLS's may not reflect all real estate activity in the market.



# MARKET ACTION REPORT

April 2017

## MLS Area: Northbrook



**ART WILSON**  
 Broker, Realtor  
 847-363-1599  
 www.NorthShoreHomesOnline.com  
 Art.Wilson@cbexchange.com



Price Range: 0 to 999999999 | Properties: Single Family Home, Townhome, Condo

	M 14	J	J	A	S	O	N	D	J 15	F	M	A	M	J	J	A	S	O	N	D	J 16	F	M	A	M	J	J	A	S	O	N	D	J 17	F	M	A
Homes Sold	54	79	80	68	55	65	51	65	31	48	54	55	54	92	66	90	70	49	54	45	40	28	48	61	85	90	93	81	46	52	57	44	39	37	56	66
3 Mo. Roll Avg			71	76	68	63	57	60	49	48	44	52	54	67	71	83	75	70	58	49	46	38	39	46	65	79	89	88	73	60	52	51	47	40	44	53

	(000's) M 14	J	J	A	S	O	N	D	J 15	F	M	A	M	J	J	A	S	O	N	D	J 16	F	M	A	M	J	J	A	S	O	N	D	J 17	F	M	A
Median Sale Price	486	470	428	494	475	455	425	429	525	491	393	463	407	450	445	453	420	435	485	425	388	414	414	415	435	488	440	408	461	498	407	442	360	457	510	419
3 Mo. Roll Avg			461	464	465	475	452	436	460	482	469	449	421	440	434	449	439	436	447	448	433	409	405	414	421	446	454	445	436	455	455	449	403	420	442	462

	M 14	J	J	A	S	O	N	D	J 15	F	M	A	M	J	J	A	S	O	N	D	J 16	F	M	A	M	J	J	A	S	O	N	D	J 17	F	M	A
Inventory	256	273	306	305	332	296	254	218	204	208	232	274	286	323	317	313	307	314	263	230	236	247	276	298	331	315	340	319	348	336	294	232	246	275	311	315
MSI	5	3	4	4	6	5	5	3	7	4	4	5	5	4	5	3	4	6	5	5	6	9	6	5	4	4	4	4	8	6	5	5	6	7	6	5

	M 14	J	J	A	S	O	N	D	J 15	F	M	A	M	J	J	A	S	O	N	D	J 16	F	M	A	M	J	J	A	S	O	N	D	J 17	F	M	A
Days On Market	39	42	35	58	35	50	46	48	57	75	71	76	59	51	45	39	51	46	37	82	57	77	41	66	50	47	36	44	41	68	53	63	61	69	81	45
3 Mo. Roll Avg			39	45	43	48	44	48	50	60	68	74	69	62	52	45	45	45	45	55	59	72	58	61	52	54	44	42	40	51	54	61	59	64	70	65

	M 14	J	J	A	S	O	N	D	J 15	F	M	A	M	J	J	A	S	O	N	D	J 16	F	M	A	M	J	J	A	S	O	N	D	J 17	F	M	A
Price per Sq Ft	206	226	210	210	210	194	200	206	207	207	197	211	210	207	202	207	205	209	200	197	190	205	204	205	213	220	196	201	198	204	192	214	189	205	193	
3 Mo. Roll Avg			214	215	210	205	201	200	204	207	204	205	206	209	206	205	205	207	205	202	196	197	200	205	207	213	210	206	198	201	198	203	198	203	201	

	M 14	J	J	A	S	O	N	D	J 15	F	M	A	M	J	J	A	S	O	N	D	J 16	F	M	A	M	J	J	A	S	O	N	D	J 17	F	M	A
Sale to List Price	0.950	0.963	0.944	0.931	0.929	0.939	0.933	0.931	0.933	0.923	0.914	0.950	0.939	0.953	0.939	0.945	0.941	0.938	0.933	0.926	0.924	0.931	0.932	0.938	0.937	0.957	0.945	0.939	0.932	0.915	0.925	0.898	0.921	0.905	0.940	0.944
3 Mo. Roll Avg			0.952	0.946	0.935	0.933	0.934	0.934	0.932	0.929	0.923	0.929	0.934	0.947	0.944	0.946	0.942	0.941	0.937	0.932	0.928	0.927	0.929	0.934	0.936	0.944	0.946	0.947	0.939	0.929	0.924	0.913	0.915	0.908	0.922	0.930

	M 14	J	J	A	S	O	N	D	J 15	F	M	A	M	J	J	A	S	O	N	D	J 16	F	M	A	M	J	J	A	S	O	N	D	J 17	F	M	A
New Listings	143	128	141	101	129	86	43	30	62	84	117	132	142	163	135	105	104	103	75	45	94	99	158	141	176	140	149	104	127	101	60	39	96	149	187	159
Inventory	256	273	306	305	332	296	254	218	204	208	232	274	286	323	317	313	307	314	263	230	236	247	276	298	331	315	340	319	348	336	294	232	246	275	311	315
Sales	54	79	80	68	55	65	51	65	31	48	54	55	54	92	66	90	70	49	54	45	40	28	48	61	85	90	93	81	46	52	57	44	39	37	56	66

	(000's) M 14	J	J	A	S	O	N	D	J 15	F	M	A	M	J	J	A	S	O	N	D	J 16	F	M	A	M	J	J	A	S	O	N	D	J 17	F	M	A
Avg Sale Price	494	491	477	548	501	463	472	492	538	493	428	523	489	511	496	483	554	494	481	451	495	456	446	473	502	555	466	491	492	515	471	536	403	600	534	462
3 Mo. Roll Avg			487	505	508	504	479	476	501	508	487	481	480	508	499	497	511	511	510	476	476	467	466	458	473	510	508	504	483	499	493	507	470	513	512	532

© 2017 Coldwell Banker Real Estate LLC. All Rights Reserved. Coldwell Banker Residential Brokerage fully supports the principles of the Fair Housing Act and the Equal Opportunity Act. Coldwell Banker Residential Brokerage is operated by a subsidiary of NRT LLC. Coldwell Banker and the Coldwell Banker Logo are registered service marks owned by Coldwell Banker Real Estate LLC.

Based on information from Midwest Real Estate Data LLC for the period 5/1/2014 through 4/30/2017. Due to MLS reporting methods and allowable reporting policy, this data is only informational and may not be completely accurate. Therefore, Coldwell Banker Residential Brokerage does not guarantee the data accuracy. Data maintained by the MLS's may not reflect all real estate activity in the market.

