

## MLS Area: Glenview / Golf



**ART WILSON**

Broker, Realtor

847-363-1599

www.NorthShoreHomesOnline.com

Art.Wilson@cbexchange.com



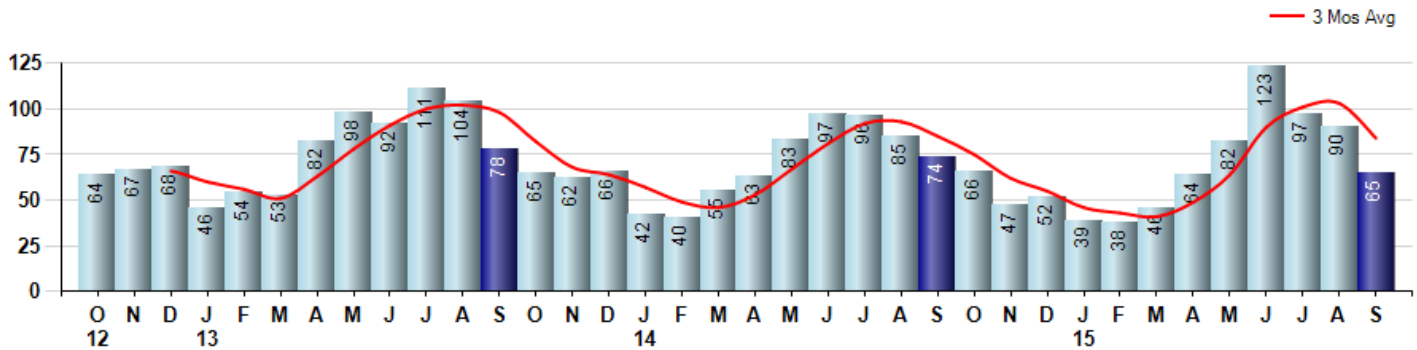
Price Range: \$0 to \$999,999,000 | Properties: Single Family Home, Townhome, Condo

| Market Profile & Trends Overview                | Month     | Trending Versus*: |     |     |    | YTD       | Trending Versus*: |           |
|---|-----------|-------------------|-----|-----|----|-----------|-------------------|-----------|
|   |           | LM                | L3M | PYM | LY |           | PriorYTD          | PriorYear |
| Median List Price of all Current Listings       | \$549,000 | ↔                 |     | ↑   |    |           |                   |           |
| Average List Price of all Current Listings      | \$715,518 | ↑                 |     | ↑   |    |           |                   |           |
| September Median Sales Price                    | \$480,000 | ↓                 | ↓   | ↑   | ↑  | \$455,000 | ↑                 | ↑         |
| September Average Sales Price                   | \$504,212 | ↓                 | ↓   | ↑   | ↑  | \$536,917 | ↑                 | ↑         |
| Total Properties Currently for Sale (Inventory) | 374       | ↔                 |     | ↑   |    |           |                   |           |
| September Number of Properties Sold             | 65        | ↓                 |     | ↓   |    | 644       | ↑                 |           |
| September Average Days on Market (Solds)        | 46        | ↑                 | ↑   | ↑   | ↑  | 48        | ↑                 | ↑         |
| September Month's Supply of Inventory           | 5.8       | ↑                 | ↑   | ↑   | ↑  | 4.9       | ↑                 | ↑         |
| September Sale Price vs List Price Ratio        | 96.1%     | ↓                 | ↓   | ↓   | ↓  | 96.5%     | ↓                 | ↓         |

\* LM=Last Month / L3M=Last 3 Months / PYM=Same Month Prior Year / LY=Last Year / YTD = Year-to-date

### Property Sales

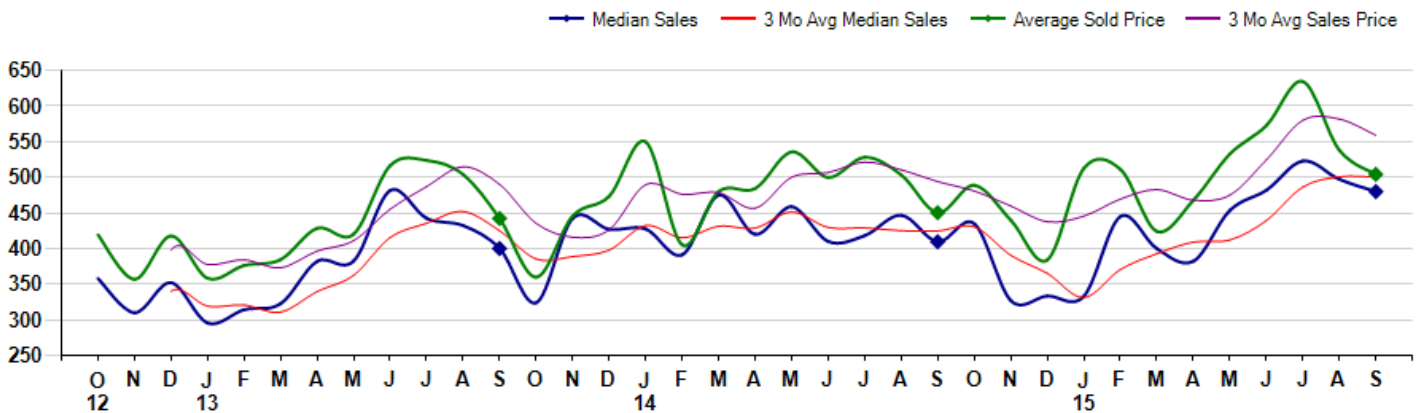
September Property sales were 65, down -12.2% from 74 in September of 2014 and -27.8% lower than the 90 sales last month. September 2015 sales were at their lowest level compared to September of 2014 and 2013. September YTD sales of 644 are running 1.4% ahead of last year's year-to-date sales of 635.



### Prices

The Median Sales Price in September was \$480,000, up 17.2% from \$409,500 in September of 2014 and down -3.5% from \$497,250 last month. The Average Sales Price in September was \$504,212, up 12.0% from \$450,315 in September of 2014 and down -6.3% from \$538,119 last month. September 2015 ASP was at highest level compared to September of 2014 and 2013.

Median means Middle (the same # of properties sold above and below Median) (000's)



## MLS Area: Glenview / Golf



**ART WILSON**

Broker, Realtor

847-363-1599

www.NorthShoreHomesOnline.com

Art.Wilson@cbexchange.com



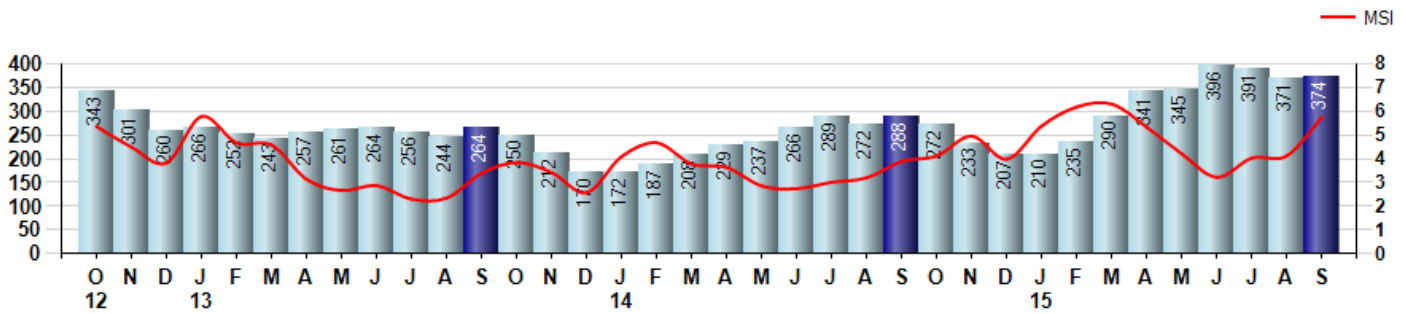
Price Range: \$0 to \$999,999,000 | Properties: Single Family Home, Townhome, Condo

### Inventory & MSI

The Total Inventory of Properties available for sale as of September was 374, up 0.8% from 371 last month and up 29.9% from 288 in September of last year. September 2015 Inventory was at highest level compared to September of 2014 and 2013.

A comparatively lower MSI is more beneficial for sellers while a higher MSI is better for buyers. The September 2015 MSI of 5.8 months was at its highest level compared with September of 2014 and 2013.

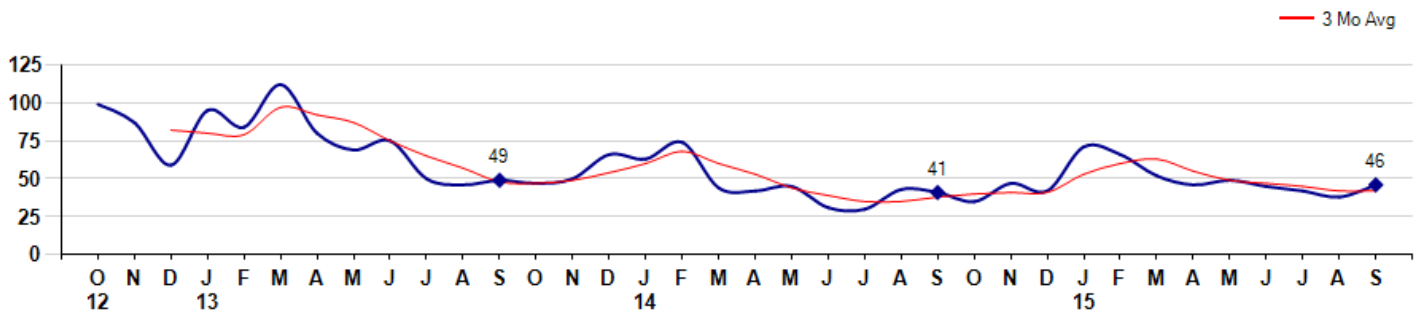
MSI is the # of months needed to sell all of the Inventory at the monthly Sales Pace



### Market Time

The average Days On Market(DOM) shows how many days the average Property is on the Market before it sells. An upward trend in DOM tends to indicate a move towards more of a Buyer's market, a downward trend a move towards more of a Seller's market. The DOM for September was 46, up 21.1% from 38 days last month and up 12.2% from 41 days in September of last year. The September 2015 DOM was at a mid range compared with September of 2014 and 2013.

Average Days on Market(Listing to Contract) for properties sold during the month



## MLS Area: Glenview / Golf



**ART WILSON**

Broker, Realtor

847-363-1599

www.NorthShoreHomesOnline.com

Art.Wilson@cbexchange.com

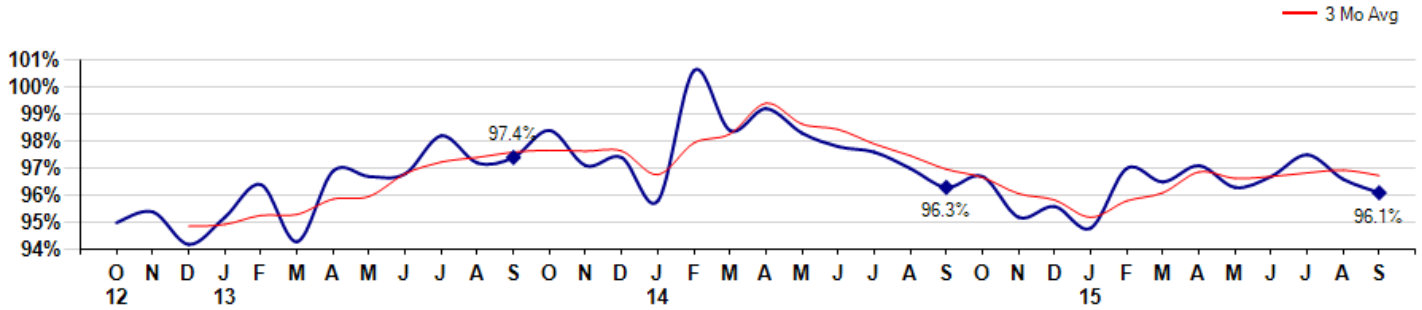


Price Range: \$0 to \$999,999,000 | Properties: Single Family Home, Townhome, Condo

### Selling Price vs Listing Price

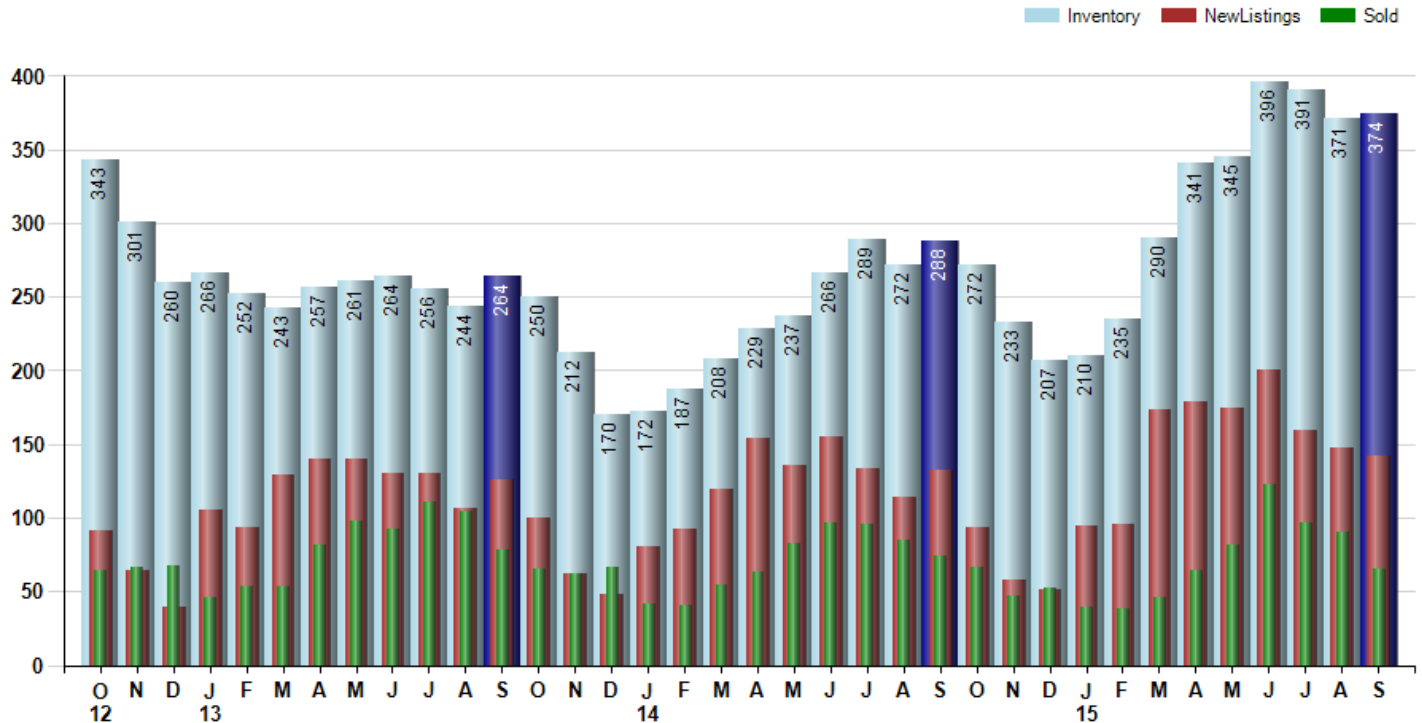
The Selling Price vs Listing Price reveals the average amount that Sellers are agreeing to come down from their list price. The lower the ratio is below 100% the more of a Buyer's market exists, a ratio at or above 100% indicates more of a Seller's market. The September 2015 Selling Price vs List Price of 96.1% was down from 96.6% last month and down from 96.3% in September of last year.

Avg Selling Price divided by Avg Listing Price for sold properties during the month



### Inventory / New Listings / Sales

This last view of the market combines monthly inventory of Properties for sale along with New Listings and Sales. The graph shows the basic annual seasonality of the market as well as the relationship between these items. The number of New Listings in September 2015 was 142, down -3.4% from 147 last month and up 7.6% from 132 in September of last year.



© 2015 Coldwell Banker Real Estate LLC. All Rights Reserved. Coldwell Banker Residential Brokerage fully supports the principles of the Fair Housing Act and the Equal Opportunity Act. Coldwell Banker Residential Brokerage is operated by a subsidiary of NRT LLC. Coldwell Banker and the Coldwell Banker Logo are registered service marks owned by Coldwell Banker Real Estate LLC.

Based on information from Midwest Real Estate Data LLC for the period 10/1/2012 through 9/30/2015. Due to MLS reporting methods and allowable reporting policy, this data is only informational and may not be completely accurate. Therefore, Coldwell Banker Residential Brokerage does not guarantee the data accuracy. Data maintained by the MLS's may not reflect all real estate activity in the market.



# MARKET ACTION REPORT

September 2015

MLS Area: *Glenview / Golf*



**ART WILSON**  
 Broker, Realtor  
 847-363-1599  
 www.NorthShoreHomesOnline.com  
 Art.Wilson@cbexchange.com



Price Range: \$0 to \$999,999,000 | Properties: Single Family Home, Townhome, Condo

|                | O  | N  | D  | J  | F  | M  | A  | M  | J  | J   | A   | S  | O  | N  | D  | J  | F  | M  | A  | M  | J  | J  | A  | S  | O  | N  | D  | J  | F  | M  | A  | M  | J   | J   | A   | S  |
|----------------|----|----|----|----|----|----|----|----|----|-----|-----|----|----|----|----|----|----|----|----|----|----|----|----|----|----|----|----|----|----|----|----|----|-----|-----|-----|----|
| Homes Sold     | 64 | 67 | 68 | 46 | 54 | 53 | 82 | 98 | 92 | 111 | 104 | 78 | 65 | 62 | 66 | 42 | 40 | 55 | 63 | 83 | 97 | 96 | 85 | 74 | 66 | 47 | 52 | 39 | 38 | 46 | 64 | 82 | 123 | 97  | 90  | 65 |
| 3 Mo. Roll Avg |    |    | 66 | 60 | 56 | 51 | 63 | 78 | 91 | 100 | 102 | 98 | 82 | 68 | 64 | 57 | 49 | 46 | 53 | 67 | 81 | 92 | 93 | 85 | 75 | 62 | 55 | 46 | 43 | 41 | 49 | 64 | 90  | 101 | 103 | 84 |

|                   | (000's) | O   | N   | D   | J   | F   | M   | A   | M   | J   | J   | A   | S   | O   | N   | D   | J   | F   | M   | A   | M   | J   | J   | A   | S   | O   | N   | D   | J   | F   | M   | A   | M   | J   | J   | A   | S |
|-------------------|---------|-----|-----|-----|-----|-----|-----|-----|-----|-----|-----|-----|-----|-----|-----|-----|-----|-----|-----|-----|-----|-----|-----|-----|-----|-----|-----|-----|-----|-----|-----|-----|-----|-----|-----|-----|---|
| Median Sale Price | 358     | 310 | 352 | 296 | 314 | 323 | 382 | 383 | 482 | 443 | 432 | 400 | 324 | 442 | 427 | 428 | 391 | 475 | 420 | 459 | 410 | 418 | 447 | 410 | 435 | 327 | 334 | 333 | 445 | 400 | 382 | 454 | 482 | 523 | 497 | 480 |   |
| 3 Mo. Roll Avg    |         |     | 340 | 319 | 321 | 311 | 340 | 362 | 415 | 436 | 452 | 425 | 385 | 389 | 398 | 432 | 415 | 431 | 429 | 451 | 430 | 429 | 425 | 425 | 430 | 391 | 365 | 331 | 371 | 393 | 409 | 412 | 439 | 486 | 501 | 500 |   |

|           | O   | N   | D   | J   | F   | M   | A   | M   | J   | J   | A   | S   | O   | N   | D   | J   | F   | M   | A   | M   | J   | J   | A   | S   | O   | N   | D   | J   | F   | M   | A   | M   | J   | J   | A   | S   |
|-----------|-----|-----|-----|-----|-----|-----|-----|-----|-----|-----|-----|-----|-----|-----|-----|-----|-----|-----|-----|-----|-----|-----|-----|-----|-----|-----|-----|-----|-----|-----|-----|-----|-----|-----|-----|-----|
| Inventory | 343 | 301 | 260 | 266 | 252 | 243 | 257 | 261 | 264 | 256 | 244 | 264 | 250 | 212 | 170 | 172 | 187 | 208 | 229 | 237 | 266 | 289 | 272 | 288 | 272 | 233 | 207 | 210 | 235 | 290 | 341 | 345 | 396 | 391 | 371 | 374 |
| MSI       | 5   | 4   | 4   | 6   | 5   | 5   | 3   | 3   | 3   | 2   | 2   | 3   | 4   | 3   | 3   | 4   | 5   | 4   | 4   | 3   | 3   | 3   | 3   | 4   | 4   | 5   | 4   | 5   | 6   | 6   | 5   | 4   | 3   | 4   | 4   | 6   |

|                | O  | N  | D  | J  | F  | M   | A  | M  | J  | J  | A  | S  | O  | N  | D  | J  | F  | M  | A  | M  | J  | J  | A  | S  | O  | N  | D  | J  | F  | M  | A  | M  | J  | J  | A  | S  |
|----------------|----|----|----|----|----|-----|----|----|----|----|----|----|----|----|----|----|----|----|----|----|----|----|----|----|----|----|----|----|----|----|----|----|----|----|----|----|
| Days On Market | 99 | 87 | 59 | 95 | 84 | 112 | 80 | 69 | 75 | 50 | 46 | 49 | 47 | 50 | 66 | 63 | 74 | 44 | 42 | 45 | 31 | 30 | 43 | 41 | 35 | 47 | 42 | 71 | 66 | 52 | 46 | 49 | 45 | 42 | 38 | 46 |
| 3 Mo. Roll Avg |    |    | 82 | 80 | 79 | 97  | 92 | 87 | 75 | 65 | 57 | 48 | 47 | 49 | 54 | 60 | 68 | 60 | 53 | 44 | 39 | 35 | 35 | 38 | 40 | 41 | 41 | 53 | 60 | 63 | 55 | 49 | 47 | 45 | 42 | 42 |

|                 | O   | N   | D   | J   | F   | M   | A   | M   | J   | J   | A   | S   | O   | N   | D   | J   | F   | M   | A   | M   | J   | J   | A   | S   | O   | N   | D   | J   | F   | M   | A   | M   | J   | J   | A   | S   |
|-----------------|-----|-----|-----|-----|-----|-----|-----|-----|-----|-----|-----|-----|-----|-----|-----|-----|-----|-----|-----|-----|-----|-----|-----|-----|-----|-----|-----|-----|-----|-----|-----|-----|-----|-----|-----|-----|
| Price per Sq Ft | 185 | 181 | 185 | 158 | 183 | 171 | 190 | 180 | 208 | 204 | 216 | 214 | 182 | 204 | 208 | 200 | 213 | 226 | 214 | 227 | 216 | 225 | 226 | 217 | 220 | 204 | 186 | 190 | 214 | 187 | 209 | 213 | 237 | 226 | 233 | 210 |
| 3 Mo. Roll Avg  |     |     | 184 | 175 | 175 | 171 | 181 | 180 | 193 | 197 | 209 | 211 | 204 | 200 | 198 | 204 | 207 | 213 | 218 | 222 | 219 | 223 | 222 | 223 | 221 | 214 | 203 | 193 | 197 | 197 | 203 | 203 | 220 | 225 | 232 | 223 |

|                    | O     | N     | D     | J     | F     | M     | A     | M     | J     | J     | A     | S     | O     | N     | D     | J     | F     | M     | A     | M     | J     | J     | A     | S     | O     | N     | D     | J     | F     | M     | A     | M     | J     | J     | A     | S     |
|--------------------|-------|-------|-------|-------|-------|-------|-------|-------|-------|-------|-------|-------|-------|-------|-------|-------|-------|-------|-------|-------|-------|-------|-------|-------|-------|-------|-------|-------|-------|-------|-------|-------|-------|-------|-------|-------|
| Sale to List Price | 0.950 | 0.954 | 0.942 | 0.952 | 0.964 | 0.943 | 0.969 | 0.967 | 0.968 | 0.982 | 0.972 | 0.974 | 0.984 | 0.971 | 0.974 | 0.958 | 1.006 | 0.984 | 0.992 | 0.983 | 0.978 | 0.976 | 0.970 | 0.963 | 0.967 | 0.952 | 0.956 | 0.948 | 0.970 | 0.965 | 0.971 | 0.963 | 0.967 | 0.975 | 0.966 | 0.961 |
| 3 Mo. Roll Avg     |       |       | 0.949 | 0.949 | 0.953 | 0.953 | 0.959 | 0.960 | 0.968 | 0.972 | 0.974 | 0.976 | 0.977 | 0.976 | 0.976 | 0.968 | 0.979 | 0.983 | 0.994 | 0.986 | 0.984 | 0.979 | 0.975 | 0.970 | 0.967 | 0.961 | 0.958 | 0.952 | 0.958 | 0.961 | 0.969 | 0.966 | 0.967 | 0.968 | 0.969 | 0.967 |

|              | O   | N   | D   | J   | F   | M   | A   | M   | J   | J   | A   | S   | O   | N   | D   | J   | F   | M   | A   | M   | J   | J   | A   | S   | O   | N   | D   | J   | F   | M   | A   | M   | J   | J   | A   | S   |
|--------------|-----|-----|-----|-----|-----|-----|-----|-----|-----|-----|-----|-----|-----|-----|-----|-----|-----|-----|-----|-----|-----|-----|-----|-----|-----|-----|-----|-----|-----|-----|-----|-----|-----|-----|-----|-----|
| New Listings | 91  | 64  | 39  | 105 | 93  | 129 | 140 | 140 | 130 | 130 | 106 | 126 | 100 | 62  | 48  | 81  | 92  | 119 | 154 | 136 | 155 | 134 | 114 | 132 | 93  | 58  | 51  | 95  | 96  | 174 | 179 | 175 | 200 | 159 | 147 | 142 |
| Inventory    | 343 | 301 | 260 | 266 | 252 | 243 | 257 | 261 | 264 | 256 | 244 | 264 | 250 | 212 | 170 | 172 | 187 | 208 | 229 | 237 | 266 | 289 | 272 | 288 | 272 | 233 | 207 | 210 | 235 | 290 | 341 | 345 | 396 | 391 | 371 | 374 |
| Sales        | 64  | 67  | 68  | 46  | 54  | 53  | 82  | 98  | 92  | 111 | 104 | 78  | 65  | 62  | 66  | 42  | 40  | 55  | 63  | 83  | 97  | 96  | 85  | 74  | 66  | 47  | 52  | 39  | 38  | 46  | 64  | 82  | 123 | 97  | 90  | 65  |

|                | (000's) | O   | N   | D   | J   | F   | M   | A   | M   | J   | J   | A   | S   | O   | N   | D   | J   | F   | M   | A   | M   | J   | J   | A   | S   | O   | N   | D   | J   | F   | M   | A   | M   | J   | J   | A   | S |
|----------------|---------|-----|-----|-----|-----|-----|-----|-----|-----|-----|-----|-----|-----|-----|-----|-----|-----|-----|-----|-----|-----|-----|-----|-----|-----|-----|-----|-----|-----|-----|-----|-----|-----|-----|-----|-----|---|
| Avg Sale Price | 419     | 357 | 418 | 358 | 376 | 384 | 429 | 420 | 517 | 524 | 504 | 442 | 360 | 446 | 473 | 550 | 405 | 480 | 484 | 536 | 500 | 528 | 503 | 450 | 489 | 440 | 384 | 513 | 511 | 424 | 468 | 533 | 573 | 635 | 538 | 504 |   |
| 3 Mo. Roll Avg |         |     | 398 | 378 | 384 | 373 | 396 | 411 | 455 | 487 | 515 | 490 | 435 | 416 | 426 | 490 | 476 | 478 | 457 | 500 | 507 | 521 | 510 | 494 | 481 | 460 | 438 | 445 | 469 | 483 | 468 | 475 | 524 | 580 | 582 | 559 |   |

© 2015 Coldwell Banker Real Estate LLC. All Rights Reserved. Coldwell Banker Residential Brokerage fully supports the principles of the Fair Housing Act and the Equal Opportunity Act. Coldwell Banker Residential Brokerage is operated by a subsidiary of NRT LLC. Coldwell Banker and the Coldwell Banker Logo are registered service marks owned by Coldwell Banker Real Estate LLC.

Based on information from Midwest Real Estate Data LLC for the period 10/1/2012 through 9/30/2015. Due to MLS reporting methods and allowable reporting policy, this data is only informational and may not be completely accurate. Therefore, Coldwell Banker Residential Brokerage does not guarantee the data accuracy. Data maintained by the MLS's may not reflect all real estate activity in the market.

