

## MLS Area: Northbrook



**ART WILSON**  
 Broker, Realtor  
 847-363-1599  
 www.NorthShoreHomesOnline.com  
 Art.Wilson@cbexchange.com



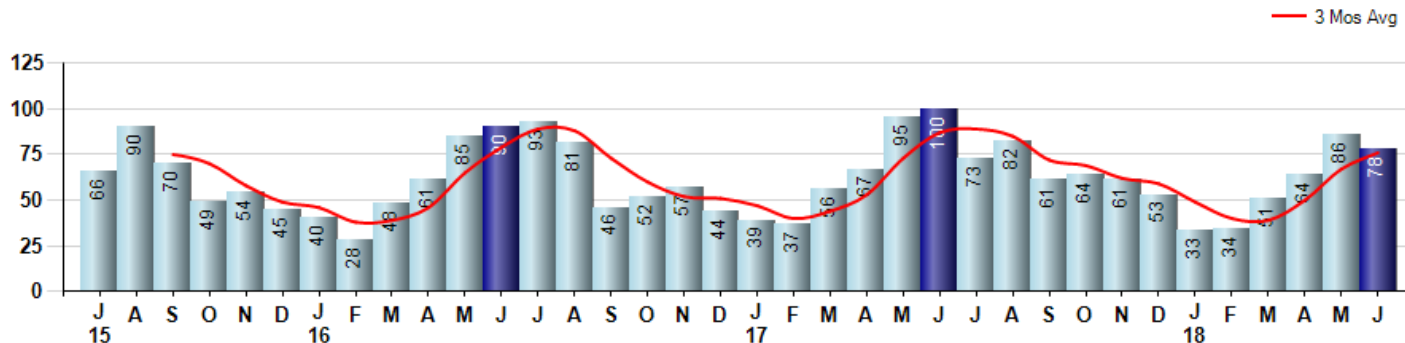
Price Range: 0 to 999999999 | Properties: Single Family Home, Townhome, Condo

Market Profile & Trends Overview	Month	Trending Versus*:				YTD	Trending Versus*:	
		LM	L3M	PYM	LY		PriorYTD	PriorYear
Median List Price of all Current Listings	\$619,000	↑		↑				
Average List Price of all Current Listings	\$711,609	↔		↓				
June Median Sales Price	\$536,500	↑	↑	↑	↑	\$435,000	↓	↓
June Average Sales Price	\$567,748	↑	↑	↔	↑	\$499,455	↓	↔
Total Properties Currently for Sale (Inventory)	371	↑		↓				
June Number of Properties Sold	78	↓		↓		346	↓	
June Average Days on Market (Solds)	38	↓	↓	↑	↓	46	↓	
June Month's Supply of Inventory	4.8	↑	↑	↑	↓	5.7	↑	↑
June Sale Price vs List Price Ratio	94.8%	↑	↑	↑	↑	94.3%	↑	↑

\* LM=Last Month / L3M=Last 3 Months / PYM=Same Month Prior Year / LY=Last Year / YTD = Year-to-date

### Property Sales

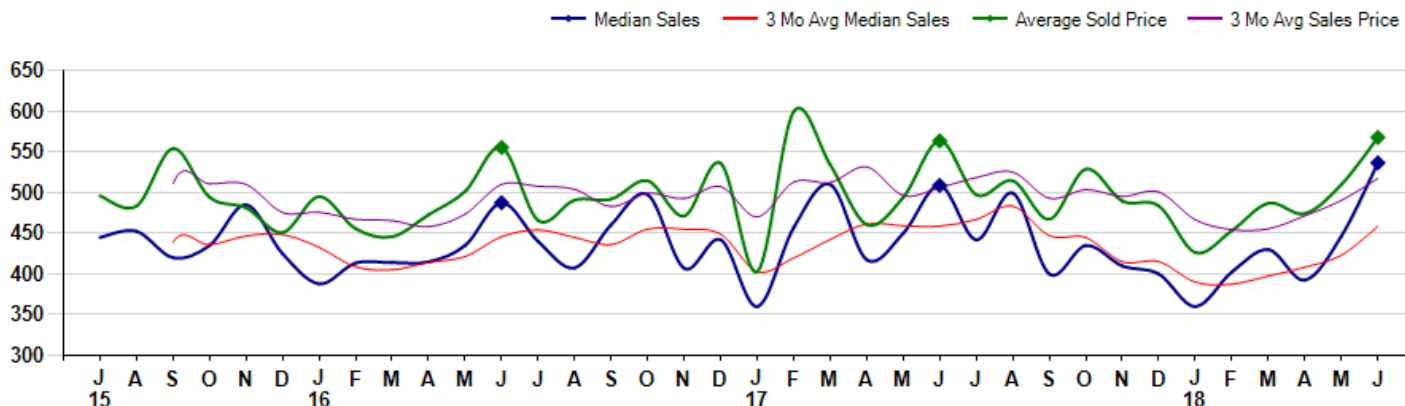
June Property sales were 78, down -22.0% from 100 in June of 2017 and -9.3% lower than the 86 sales last month. June 2018 sales were at their lowest level compared to June of 2017 and 2016. June YTD sales of 346 are running -12.2% behind last year's year-to-date sales of 394.



### Prices

The Median Sales Price in June was \$536,500, up 5.4% from \$508,800 in June of 2017 and up 20.2% from \$446,500 last month. The Average Sales Price in June was \$567,748, up 0.8% from \$563,477 in June of 2017 and up 11.3% from \$509,978 last month. June 2018 ASP was at highest level compared to June of 2017 and 2016.

Median means Middle (the same # of properties sold above and below Median) (000's)



## MLS Area: Northbrook



**ART WILSON**  
 Broker, Realtor  
 847-363-1599  
 www.NorthShoreHomesOnline.com  
 Art.Wilson@cbexchange.com



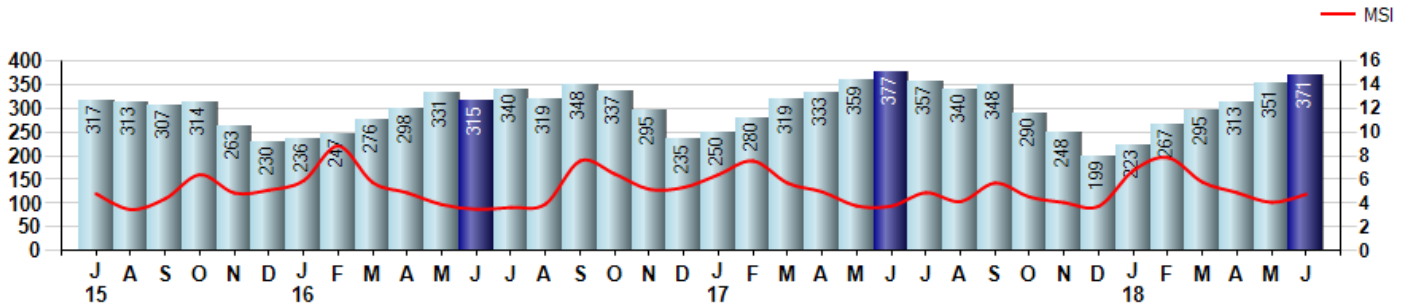
Price Range: 0 to 999999999 | Properties: Single Family Home, Townhome, Condo

### Inventory & MSI

The Total Inventory of Properties available for sale as of June was 371, up 5.7% from 351 last month and down -1.6% from 377 in June of last year. June 2018 Inventory was at a mid range compared to June of 2017 and 2016.

A comparatively lower MSI is more beneficial for sellers while a higher MSI is better for buyers. The June 2018 MSI of 4.8 months was at its highest level compared with June of 2017 and 2016.

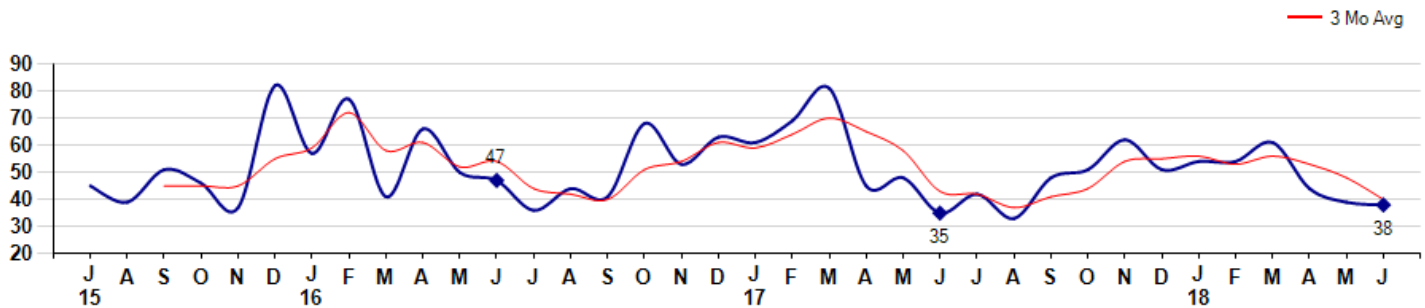
MSI is the # of months needed to sell all of the Inventory at the monthly Sales Pace



### Market Time

The average Days On Market(DOM) shows how many days the average Property is on the Market before it sells. An upward trend in DOM tends to indicate a move towards more of a Buyer's market, a downward trend a move towards more of a Seller's market. The DOM for June was 38, down -2.6% from 39 days last month and up 8.6% from 35 days in June of last year. The June 2018 DOM was at a mid range compared with June of 2017 and 2016.

Average Days on Market(Listing to Contract) for properties sold during the month



## MLS Area: Northbrook



**ART WILSON**  
 Broker, Realtor  
 847-363-1599  
[www.NorthShoreHomesOnline.com](http://www.NorthShoreHomesOnline.com)  
[Art.Wilson@cbexchange.com](mailto:Art.Wilson@cbexchange.com)

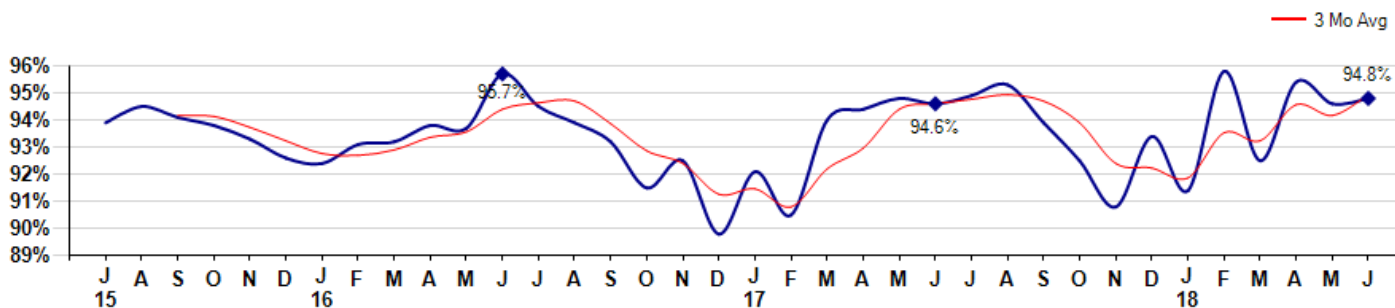


Price Range: 0 to 999999999 | Properties: Single Family Home, Townhome, Condo

### Selling Price vs Listing Price

The Selling Price vs Listing Price reveals the average amount that Sellers are agreeing to come down from their list price. The lower the ratio is below 100% the more of a Buyer's market exists, a ratio at or above 100% indicates more of a Seller's market. The June 2018 Selling Price vs List Price of 94.8% was up from 94.6% last month and up from 94.6% in June of last year.

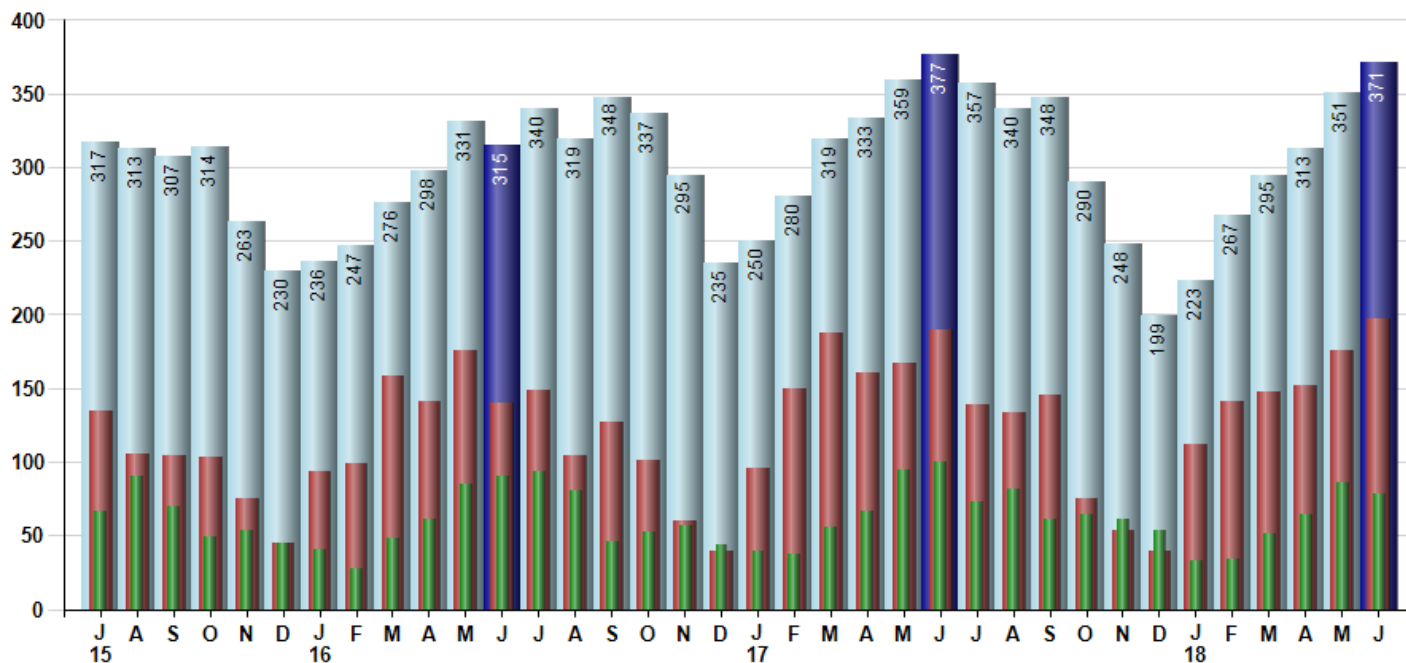
Avg Selling Price divided by Avg Listing Price for sold properties during the month



### Inventory / New Listings / Sales

This last view of the market combines monthly inventory of Properties for sale along with New Listings and Sales. The graph shows the basic annual seasonality of the market as well as the relationship between these items. The number of New Listings in June 2018 was 197, up 11.9% from 176 last month and up 3.7% from 190 in June of last year.

Inventory    New Listings    Sold



© 2018 Coldwell Banker Residential Brokerage. All Rights Reserved. Coldwell Banker Residential Brokerage fully supports the principles of the Fair Housing Act and the Equal Opportunity Act. Coldwell Banker Residential Brokerage is operated by a subsidiary of NRT LLC. Coldwell Banker and the Coldwell Banker Logo are registered service marks owned by Coldwell Banker Real Estate LLC.

Based on information from Midwest Real Estate Data LLC for the period 7/1/2015 through 6/30/2018. Due to MLS reporting methods and allowable reporting policy, this data is only informational and may not be completely accurate. Therefore, Coldwell Banker Residential Brokerage does not guarantee the data accuracy. Data maintained by the MLS's may not reflect all real estate activity in the market.



# MARKET ACTION REPORT

June 2018

## MLS Area: Northbrook



**ART WILSON**  
 Broker, Realtor  
 847-363-1599  
 www.NorthShoreHomesOnline.com  
 Art.Wilson@cbexchange.com



Price Range: 0 to 999999999 | Properties: Single Family Home, Townhome, Condo

	J 15	A	S	O	N	D	J 16	F	M	A	M	J	J	A	S	O	N	D	J 17	F	M	A	M	J	J	A	S	O	N	D	J 18	F	M	A	M	J
Homes Sold	66	90	70	49	54	45	40	28	48	61	85	90	93	81	46	52	57	44	39	37	56	67	95	100	73	82	61	64	61	53	33	34	51	64	86	78
3 Mo. Roll Avg			75	70	58	49	46	38	39	46	65	79	89	88	73	60	52	51	47	40	44	53	73	87	89	85	72	69	62	59	49	40	39	50	67	76

(000's)	J 15	A	S	O	N	D	J 16	F	M	A	M	J	J	A	S	O	N	D	J 17	F	M	A	M	J	J	A	S	O	N	D	J 18	F	M	A	M	J
Median Sale Price	445	453	420	435	485	425	388	414	414	415	435	488	440	408	461	498	407	442	360	457	510	418	450	509	442	499	400	435	410	400	360	403	430	393	447	537
3 Mo. Roll Avg			439	436	447	448	433	409	405	414	421	446	454	445	436	455	455	449	403	420	442	462	459	459	467	483	447	445	415	415	390	388	398	408	423	459

	J 15	A	S	O	N	D	J 16	F	M	A	M	J	J	A	S	O	N	D	J 17	F	M	A	M	J	J	A	S	O	N	D	J 18	F	M	A	M	J
Inventory	317	313	307	314	263	230	236	247	276	298	331	315	340	319	348	337	295	235	250	280	319	333	359	377	357	340	348	290	248	199	223	267	295	313	351	371
MSI	5	3	4	6	5	5	6	9	6	5	4	4	4	4	8	6	5	5	6	8	6	5	4	4	5	4	6	5	4	4	7	8	6	5	4	5

	J 15	A	S	O	N	D	J 16	F	M	A	M	J	J	A	S	O	N	D	J 17	F	M	A	M	J	J	A	S	O	N	D	J 18	F	M	A	M	J
Days On Market	45	39	51	46	37	82	57	77	41	66	50	47	36	44	41	68	53	63	61	69	81	45	48	35	42	33	48	51	62	51	54	54	61	44	39	38
3 Mo. Roll Avg			45	45	45	55	59	72	58	61	52	54	44	42	40	51	54	61	59	64	70	65	58	43	42	37	41	44	54	55	56	53	56	53	48	40

	J 15	A	S	O	N	D	J 16	F	M	A	M	J	J	A	S	O	N	D	J 17	F	M	A	M	J	J	A	S	O	N	D	J 18	F	M	A	M	J
Price per Sq Ft	202	207	205	209	200	197	190	205	204	205	213	220	196	201	198	204	192	214	189	205	205	195	208	226	212	219	217	205	215	198	190	221	201	215	211	207
3 Mo. Roll Avg			205	207	205	202	196	197	200	205	207	213	210	206	198	201	198	203	198	203	200	202	203	210	215	219	216	214	212	206	201	203	204	212	209	211

	J 15	A	S	O	N	D	J 16	F	M	A	M	J	J	A	S	O	N	D	J 17	F	M	A	M	J	J	A	S	O	N	D	J 18	F	M	A	M	J
Sale to List Price	0.939	0.945	0.941	0.938	0.933	0.926	0.924	0.931	0.932	0.938	0.937	0.957	0.945	0.939	0.932	0.915	0.925	0.898	0.921	0.905	0.940	0.944	0.948	0.946	0.949	0.953	0.939	0.925	0.908	0.934	0.914	0.958	0.925	0.954	0.946	0.948
3 Mo. Roll Avg			0.942	0.941	0.937	0.932	0.928	0.927	0.929	0.934	0.936	0.944	0.946	0.947	0.939	0.929	0.924	0.913	0.915	0.908	0.922	0.930	0.944	0.946	0.948	0.949	0.947	0.939	0.924	0.922	0.919	0.935	0.932	0.946	0.942	0.949

	J 15	A	S	O	N	D	J 16	F	M	A	M	J	J	A	S	O	N	D	J 17	F	M	A	M	J	J	A	S	O	N	D	J 18	F	M	A	M	J
New Listings	135	105	104	103	75	45	94	99	158	141	176	140	149	104	127	101	60	39	96	150	188	160	167	190	139	134	145	75	54	39	112	141	147	152	176	197
Inventory	317	313	307	314	263	230	236	247	276	298	331	315	340	319	348	337	295	235	250	280	319	333	359	377	357	340	348	290	248	199	223	267	295	313	351	371
Sales	66	90	70	49	54	45	40	28	48	61	85	90	93	81	46	52	57	44	39	37	56	67	95	100	73	82	61	64	61	53	33	34	51	64	86	78

(000's)	J 15	A	S	O	N	D	J 16	F	M	A	M	J	J	A	S	O	N	D	J 17	F	M	A	M	J	J	A	S	O	N	D	J 18	F	M	A	M	J
Avg Sale Price	496	483	554	494	481	451	495	456	446	473	502	555	466	491	492	515	471	536	403	600	534	461	494	563	497	515	467	529	490	484	426	453	487	474	510	568
3 Mo. Roll Avg			511	511	510	476	476	467	466	458	473	510	508	504	483	499	493	507	470	513	512	532	496	506	518	525	493	504	495	501	467	454	456	472	490	517

© 2018 Coldwell Banker Residential Brokerage. All Rights Reserved. Coldwell Banker Residential Brokerage fully supports the principles of the Fair Housing Act and the Equal Opportunity Act. Coldwell Banker Residential Brokerage is operated by a subsidiary of NRT LLC. Coldwell Banker and the Coldwell Banker Logo are registered service marks owned by Coldwell Banker Real Estate LLC.

Based on information from Midwest Real Estate Data LLC for the period 7/1/2015 through 6/30/2018. Due to MLS reporting methods and allowable reporting policy, this data is only informational and may not be completely accurate. Therefore, Coldwell Banker Residential Brokerage does not guarantee the data accuracy. Data maintained by the MLS's may not reflect all real estate activity in the market.

