

MLS Area: Lake Bluff



ART WILSON

Broker, Realtor

847-363-1599

www.NorthShoreHomesOnline.com

Art.Wilson@cbexchange.com



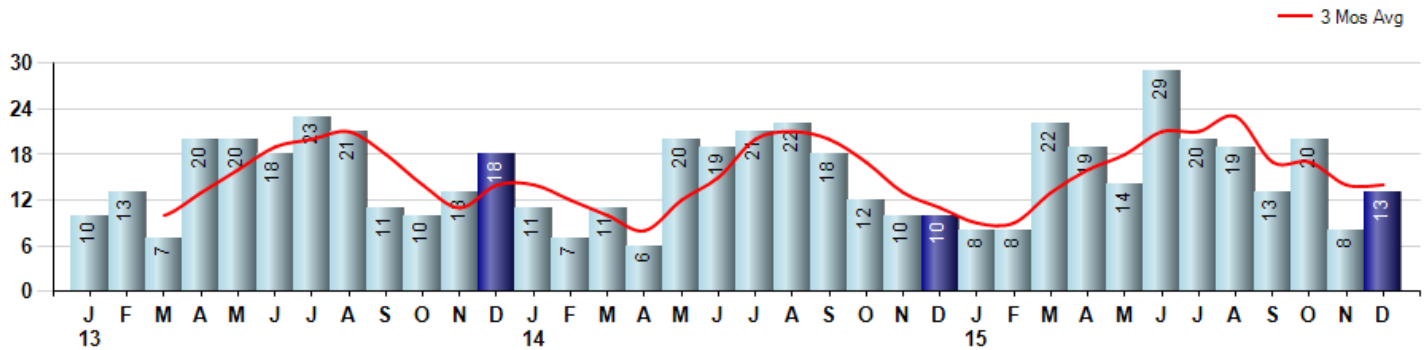
Price Range: \$0 to \$999,999,000 | Properties: Single Family Home, Townhome, Condo

Market Profile & Trends Overview	Month	Trending Versus*:				YTD	Trending Versus*:	
		LM	L3M	PYM	LY		PriorYTD	PriorYear
Median List Price of all Current Listings	\$599,000	↓		↑				
Average List Price of all Current Listings	\$1,175,588	↔		↑				
December Median Sales Price	\$400,000	↑	↔	↓	↓	\$420,000	↓	↓
December Average Sales Price	\$480,839	↓	↓	↓	↓	\$492,513	↓	↓
Total Properties Currently for Sale (Inventory)	75	↓		↑				
December Number of Properties Sold	13	↑		↑		193	↑	
December Average Days on Market (Solds)	79	↑	↑	↓	↑	63	↓	↓
December Month's Supply of Inventory	5.8	↓	↓	↓	↓	6.3	↓	↓
December Sale Price vs List Price Ratio	94.4%	↓	↑	↓	↑	95.0%	↑	↑

* LM=Last Month / L3M=Last 3 Months / PYM=Same Month Prior Year / LY=Last Year / YTD = Year-to-date

Property Sales

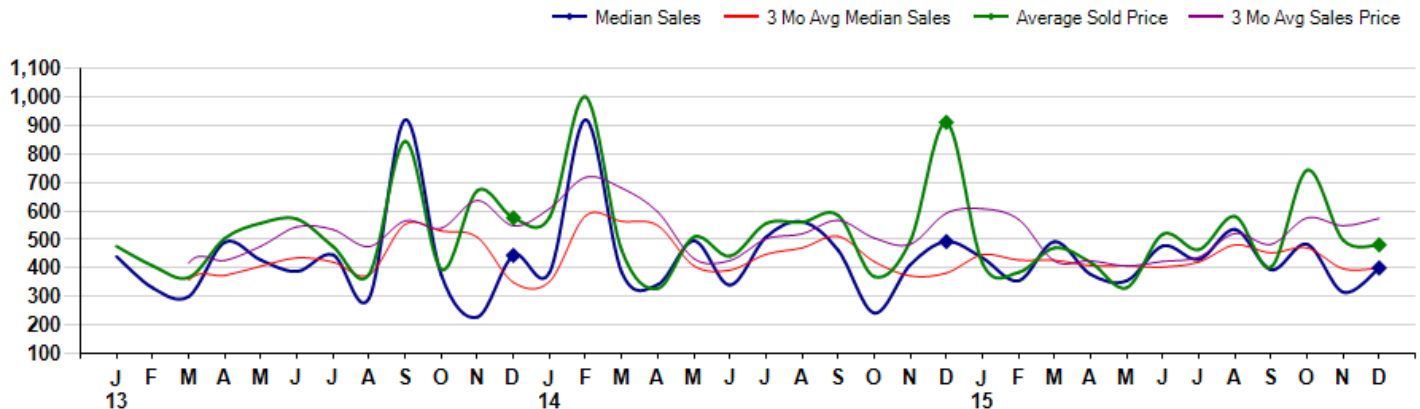
December Property sales were 13, up 30.0% from 10 in December of 2014 and 62.5% higher than the 8 sales last month. December 2015 sales were at a mid level compared to December of 2014 and 2013. December YTD sales of 193 are running 15.6% ahead of last year's year-to-date sales of 167.



Prices

The Median Sales Price in December was \$400,000, down -18.8% from \$492,500 in December of 2014 and up 27.1% from \$314,750 last month. The Average Sales Price in December was \$480,839, down -47.2% from \$910,950 in December of 2014 and down -3.4% from \$497,563 last month. December 2015 ASP was at the lowest level compared to December of 2014 and 2013.

Median means Middle (the same # of properties sold above and below Median) (000's)



MLS Area: Lake Bluff



ART WILSON

Broker, Realtor

847-363-1599

www.NorthShoreHomesOnline.com

Art.Wilson@cbexchange.com



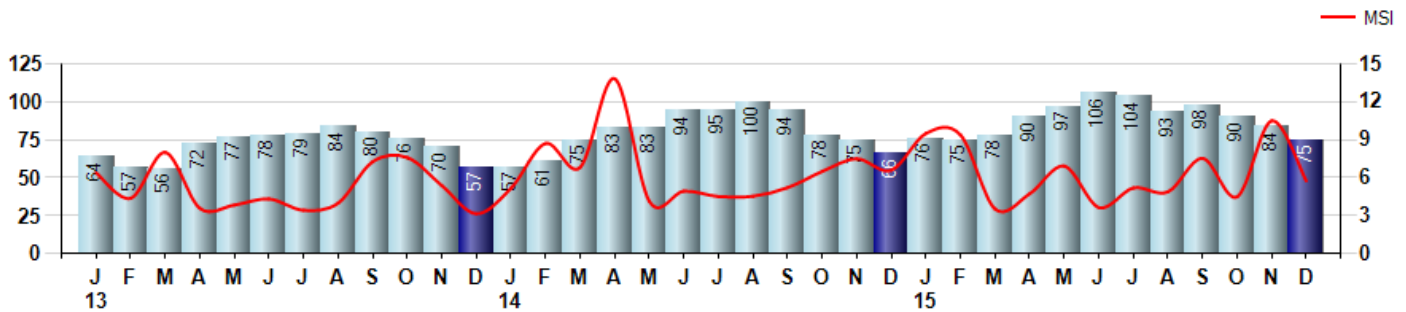
Price Range: \$0 to \$999,999,000 | Properties: Single Family Home, Townhome, Condo

Inventory & MSI

The Total Inventory of Properties available for sale as of December was 75, down -10.7% from 84 last month and up 13.6% from 66 in December of last year. December 2015 Inventory was at highest level compared to December of 2014 and 2013.

A comparatively lower MSI is more beneficial for sellers while a higher MSI is better for buyers. The December 2015 MSI of 5.8 months was at a mid range compared with December of 2014 and 2013.

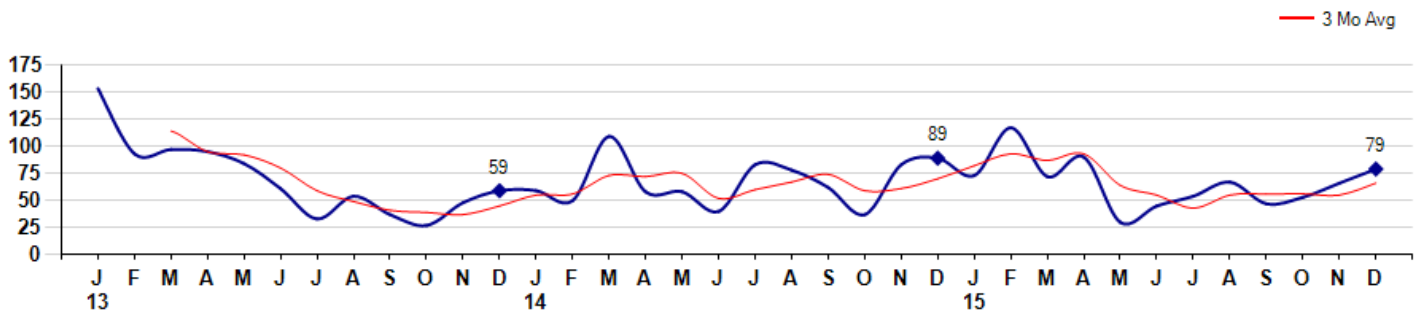
MSI is the # of months needed to sell all of the Inventory at the monthly Sales Pace



Market Time

The average Days On Market(DOM) shows how many days the average Property is on the Market before it sells. An upward trend in DOM tends to indicate a move towards more of a Buyer's market, a downward trend a move towards more of a Seller's market. The DOM for December was 79, up 19.7% from 66 days last month and down -11.2% from 89 days in December of last year. The December 2015 DOM was at a mid range compared with December of 2014 and 2013.

Average Days on Market(Listing to Contract) for properties sold during the month



MLS Area: Lake Bluff



ART WILSON

Broker, Realtor

847-363-1599

www.NorthShoreHomesOnline.com

Art.Wilson@cbexchange.com

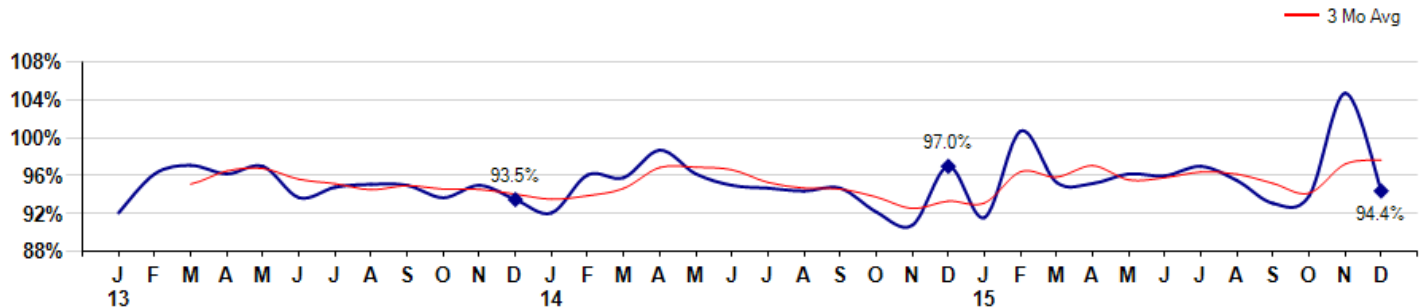


Price Range: \$0 to \$999,999,000 | Properties: Single Family Home, Townhome, Condo

Selling Price vs Listing Price

The Selling Price vs Listing Price reveals the average amount that Sellers are agreeing to come down from their list price. The lower the ratio is below 100% the more of a Buyer's market exists, a ratio at or above 100% indicates more of a Seller's market. The December 2015 Selling Price vs List Price of 94.4% was down from 104.7% last month and down from 97.0% in December of last year.

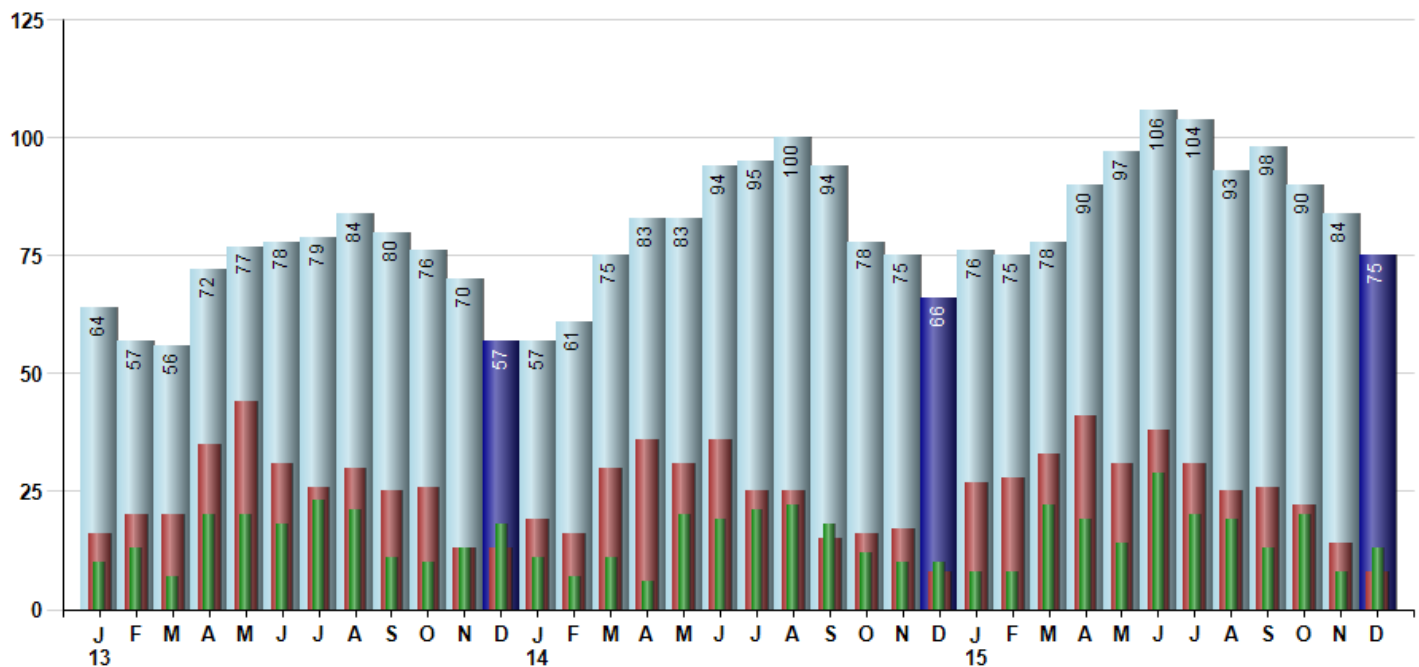
Avg Selling Price divided by Avg Listing Price for sold properties during the month



Inventory / New Listings / Sales

This last view of the market combines monthly inventory of Properties for sale along with New Listings and Sales. The graph shows the basic annual seasonality of the market as well as the relationship between these items. The number of New Listings in December 2015 was 8, down -42.9% from 14 last month and equal to 8 in December of last year.

Inventory (light blue), New Listings (red), Sold (green)



© 2016 Coldwell Banker Real Estate LLC. All Rights Reserved. Coldwell Banker Residential Brokerage fully supports the principles of the Fair Housing Act and the Equal Opportunity Act. Coldwell Banker Residential Brokerage is operated by a subsidiary of NRT LLC. Coldwell Banker and the Coldwell Banker Logo are registered service marks owned by Coldwell Banker Real Estate LLC.

Based on information from Midwest Real Estate Data LLC for the period 1/1/2013 through 12/31/2015. Due to MLS reporting methods and allowable reporting policy, this data is only informational and may not be completely accurate. Therefore, Coldwell Banker Residential Brokerage does not guarantee the data accuracy. Data maintained by the MLS's may not reflect all real estate activity in the market.



MLS Area: Lake Bluff



ART WILSON

Broker, Realtor

847-363-1599

www.NorthShoreHomesOnline.com

Art.Wilson@cbexchange.com



Price Range: \$0 to \$999,999,000 | Properties: Single Family Home, Townhome, Condo

	J 13	F	M	A	M	J	J	A	S	O	N	D	J 14	F	M	A	M	J	J	A	S	O	N	D	J 15	F	M	A	M	J	J	A	S	O	N	D
Homes Sold	10	13	7	20	20	18	23	21	11	10	13	18	11	7	11	6	20	19	21	22	18	12	10	10	8	8	22	19	14	29	20	19	13	20	8	13
3 Mo. Roll Avg			10	13	16	19	20	21	18	14	11	14	14	12	10	8	12	15	20	21	20	17	13	11	9	9	13	16	18	21	21	23	17	17	14	14

(000's)	J 13	F	M	A	M	J	J	A	S	O	N	D	J 14	F	M	A	M	J	J	A	S	O	N	D	J 15	F	M	A	M	J	J	A	S	O	N	D
Median Sale Price	440	330	300	491	428	388	446	294	920	375	228	444	385	920	385	342	495	340	508	562	463	242	411	493	435	355	492	377	355	478	430	535	394	483	315	400
3 Mo. Roll Avg			357	373	406	435	420	376	553	530	508	349	352	583	563	549	407	392	448	470	511	422	372	382	446	428	427	408	408	403	421	481	453	471	397	399

	J 13	F	M	A	M	J	J	A	S	O	N	D	J 14	F	M	A	M	J	J	A	S	O	N	D	J 15	F	M	A	M	J	J	A	S	O	N	D
Inventory	64	57	56	72	77	78	79	84	80	76	70	57	57	61	75	83	83	94	95	100	94	78	75	66	76	75	78	90	97	106	104	93	98	90	84	75
MSI	6	4	8	4	4	4	3	4	7	8	5	3	5	9	7	14	4	5	5	5	5	7	8	7	10	9	4	5	7	4	5	5	8	5	11	6

	J 13	F	M	A	M	J	J	A	S	O	N	D	J 14	F	M	A	M	J	J	A	S	O	N	D	J 15	F	M	A	M	J	J	A	S	O	N	D
Days On Market	153	93	97	95	84	61	33	54	37	27	48	59	59	50	109	58	58	40	83	78	62	37	83	89	73	117	72	90	30	45	54	67	47	53	66	79
3 Mo. Roll Avg			114	95	92	80	59	49	41	39	37	45	55	56	73	72	75	52	60	67	74	59	61	70	82	93	87	93	64	55	43	55	56	56	55	66

	J 13	F	M	A	M	J	J	A	S	O	N	D	J 14	F	M	A	M	J	J	A	S	O	N	D	J 15	F	M	A	M	J	J	A	S	O	N	D
Price per Sq Ft	199	168	181	214	198	175	196	173	316	205	190	192	218	259	198	174	216	180	193	230	231	171	192	247	188	172	221	200	181	219	206	252	179	253	205	213
3 Mo. Roll Avg			183	188	198	196	190	181	228	231	237	196	200	223	225	210	196	190	196	201	218	211	198	203	209	202	194	198	201	200	202	226	212	228	212	224

	J 13	F	M	A	M	J	J	A	S	O	N	D	J 14	F	M	A	M	J	J	A	S	O	N	D	J 15	F	M	A	M	J	J	A	S	O	N	D
Sale to List Price	0.921	0.962	0.971	0.962	0.970	0.937	0.948	0.951	0.950	0.937	0.950	0.935	0.921	0.961	0.958	0.987	0.962	0.950	0.947	0.944	0.947	0.922	0.908	0.970	0.916	1.007	0.953	0.952	0.962	0.960	0.970	0.955	0.931	0.939	1.047	0.944
3 Mo. Roll Avg			0.951	0.965	0.968	0.956	0.952	0.945	0.950	0.946	0.946	0.941	0.935	0.939	0.947	0.969	0.969	0.966	0.953	0.947	0.946	0.938	0.926	0.933	0.931	0.964	0.959	0.971	0.956	0.958	0.964	0.962	0.952	0.942	0.972	0.977

	J 13	F	M	A	M	J	J	A	S	O	N	D	J 14	F	M	A	M	J	J	A	S	O	N	D	J 15	F	M	A	M	J	J	A	S	O	N	D
New Listings	16	20	20	35	44	31	26	30	25	26	13	13	19	16	30	36	31	36	25	25	15	16	17	8	27	28	33	41	31	38	31	25	26	22	14	8
Inventory	64	57	56	72	77	78	79	84	80	76	70	57	57	61	75	83	83	94	95	100	94	78	75	66	76	75	78	90	97	106	104	93	98	90	84	75
Sales	10	13	7	20	20	18	23	21	11	10	13	18	11	7	11	6	20	19	21	22	18	12	10	10	8	8	22	19	14	29	20	19	13	20	8	13

(000's)	J 13	F	M	A	M	J	J	A	S	O	N	D	J 14	F	M	A	M	J	J	A	S	O	N	D	J 15	F	M	A	M	J	J	A	S	O	N	D
Avg Sale Price	476	408	367	504	557	571	475	378	844	395	672	576	578	1,001	462	328	508	441	556	561	584	369	495	911	416	385	470	420	331	519	464	581	403	743	498	481
3 Mo. Roll Avg			417	426	476	544	535	475	566	539	637	547	608	718	680	597	433	426	502	519	567	505	483	592	608	571	424	425	407	423	438	521	483	576	548	574

© 2016 Coldwell Banker Real Estate LLC. All Rights Reserved. Coldwell Banker Residential Brokerage fully supports the principles of the Fair Housing Act and the Equal Opportunity Act. Coldwell Banker Residential Brokerage is operated by a subsidiary of NRT LLC. Coldwell Banker and the Coldwell Banker Logo are registered service marks owned by Coldwell Banker Real Estate LLC.

Based on information from Midwest Real Estate Data LLC for the period 1/1/2013 through 12/31/2015. Due to MLS reporting methods and allowable reporting policy, this data is only informational and may not be completely accurate. Therefore, Coldwell Banker Residential Brokerage does not guarantee the data accuracy. Data maintained by the MLS's may not reflect all real estate activity in the market.

