

## MLS Area: Deerfield



**ART WILSON**  
 Broker, Realtor  
 847-363-1599  
 Art.Wilson@cbexchange.com



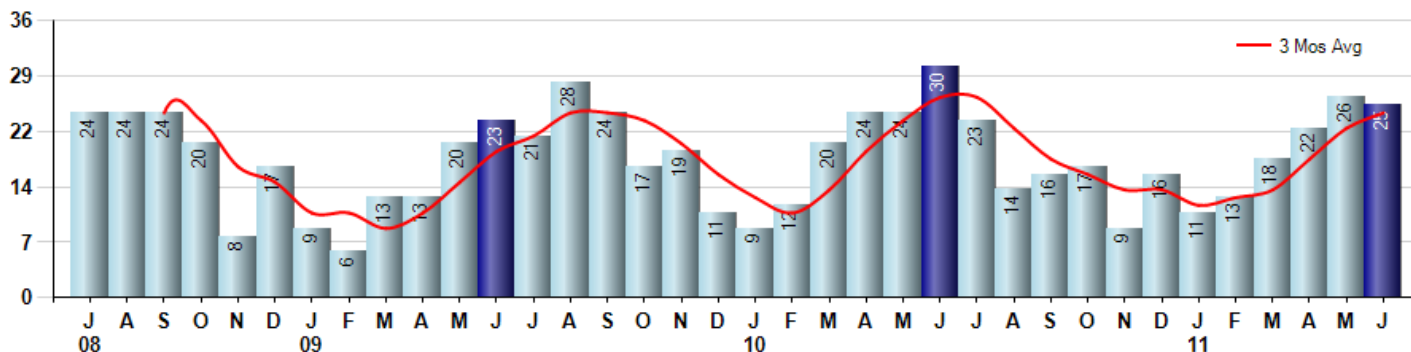
Price Range: ALL | Properties: Single Family Home, Townhome, Condo

Market Profile & Trends Overview	Month	Trending Versus*:				YTD	Trending Versus*:	
		LM	L3M	PYM	LY		PriorYTD	PriorYear
Median List Price of all Current Listings	\$399,900	↔		↓				
Average List Price of all Current Listings	\$537,879	↓		↔				
June Median Sales Price	\$422,500	↑	↑	↓	↑	\$320,000	↓	↓
June Average Sales Price	\$505,060	↑	↑	↔	↑	\$402,366	↓	↓
Total Properties Currently for Sale (Inventory)	197	↑		↓				
June Number of Properties Sold	25	↓		↓		115	↓	
June Average Days on Market (Solds)	52	↓	↓	↓	↓	98	↓	↓
June Month's Supply of Inventory	7.9	↑	↓	↓	↓	10.7	↓	↓
June Sale Price vs List Price Ratio	91.2%	↑	↑	↑	↑	88.2%	↑	↑

\* LM=Last Month / L3M=Last 3 Months / PYM=Same Month Prior Year / LY=Last Year / YTD = Year-to-date

### Property Sales

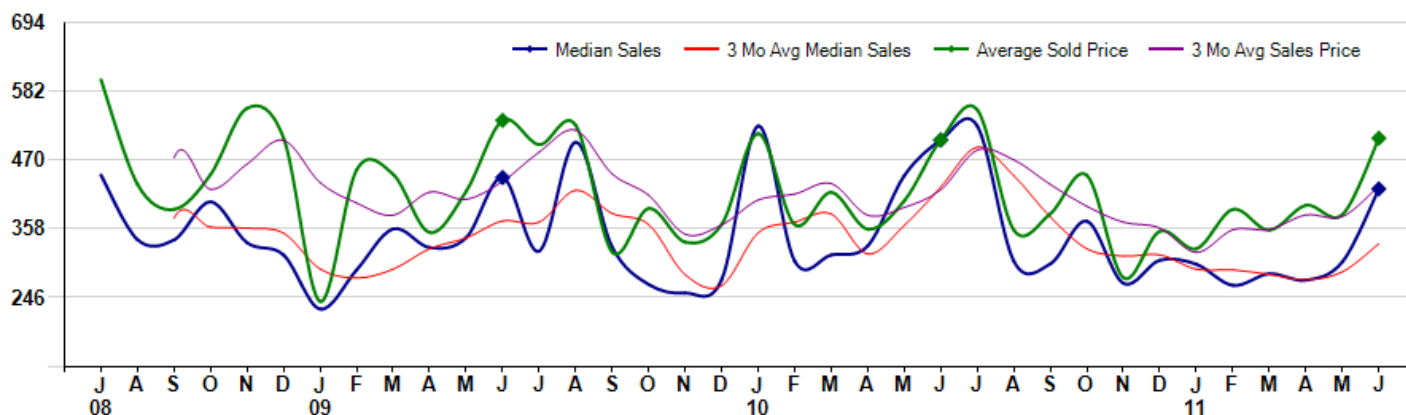
June Property sales were 25, down -16.7% from 30 in June of 2010 and -3.8% lower than the 26 sales last month. June 2011 sales were at a mid level compared to June of 2010 and 2009. June YTD sales of 115 are running -3.4% behind last year's year-to-date sales of 119.



### Prices

The Median Sales Price in June was \$422,500, down -15.8% from \$502,000 in June of 2010 and up 39.1% from \$303,750 last month. The Average Sales Price in June was \$505,060, up 0.5% from \$502,330 in June of 2010 and up 32.6% from \$380,846 last month. June 2011 ASP was at a mid range compared to June of 2010 and 2009.

Median means Middle (the same # of properties sold above and below Median) (000's)



Based on information from Midwest Real Estate Data LLC for the period 7/1/2008 through 6/30/2011. Due to MLS reporting methods and allowable reporting policy, this data is only informational and may not be completely accurate. Therefore, Coldwell Banker Residential Brokerage does not guarantee the data accuracy. Data maintained by the MLS's may not reflect all real estate activity in the market.



## MLS Area: Deerfield



**ART WILSON**  
 Broker, Realtor  
 847-363-1599  
 Art.Wilson@cbexchange.com



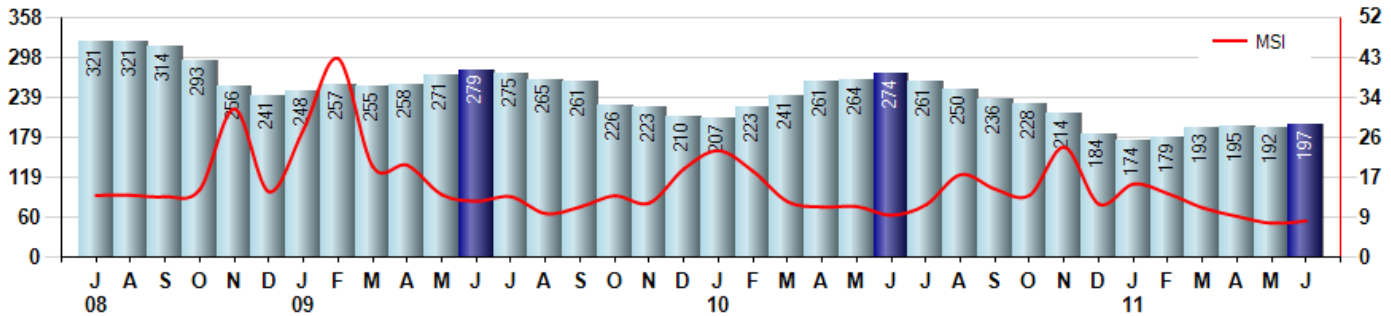
Price Range: ALL | Properties: Single Family Home, Townhome, Condo

### Inventory & MSI

The Total Inventory of Properties available for sale as of June was 197, up 2.6% from 192 last month and down -28.1% from 274 in June of last year. June 2011 Inventory was at the lowest level compared to June of 2010 and 2009.

A comparatively lower MSI is more beneficial for sellers while a higher MSI is better for buyers. The June 2011 MSI of 7.9 months was at its lowest level compared with June of 2010 and 2009.

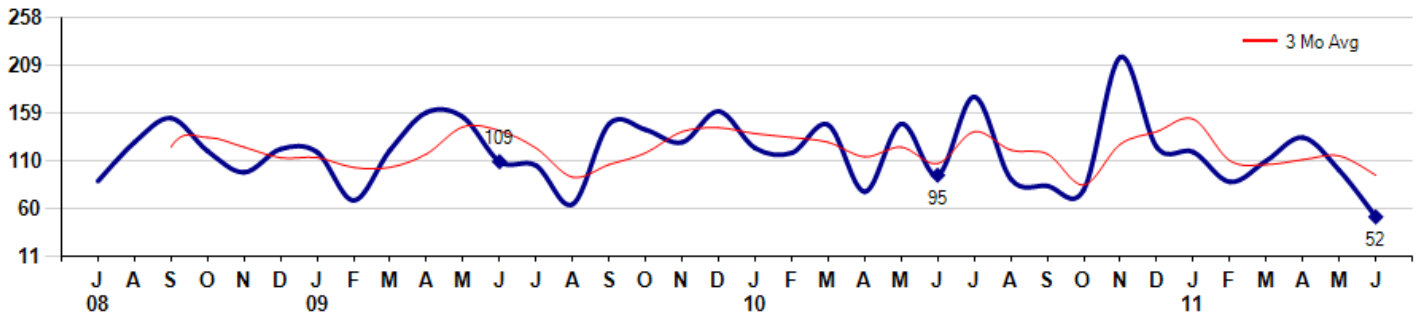
MSI is the # of months needed to sell all of the Inventory at the monthly Sales Pace



### Market Time

The average Days On Market (DOM) shows how many days the average Property is on the Market before it sells. An upward trend in DOM tends to indicate a move towards more of a Buyer's market, a downward trend a move towards more of a Seller's market. The DOM for June was 52, down -48.0% from 100 days last month and down -45.3% from 95 days in June of last year. The June 2011 DOM was at its lowest level compared with June of 2010 and 2009.

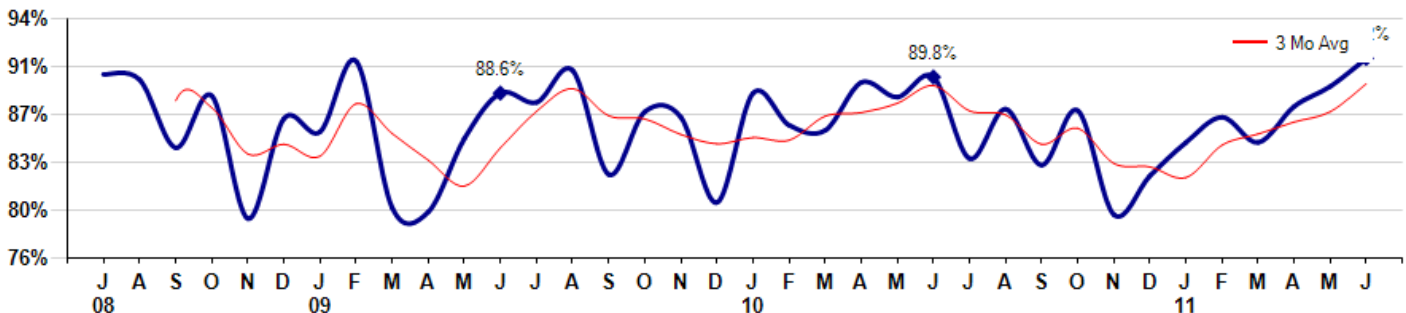
Average Days on Market (Listing to Contract) for properties sold during the month



### Selling Price vs Original Listing Price

The Selling Price vs Original Listing Price reveals the average amount that Sellers are agreeing to come down from their original list price. The lower the ratio is below 100% the more of a Buyer's market exists, a ratio at or above 100% indicates more of a Seller's market. The June 2011 Selling Price vs Original List Price of 91.2% was up from 89.1% last month and up from 89.8% in June of last year.

Avg Selling Price divided by Avg Listing Price for sold properties during the month



Based on information from Midwest Real Estate Data LLC for the period 7/1/2008 through 6/30/2011. Due to MLS reporting methods and allowable reporting policy, this data is only informational and may not be completely accurate. Therefore, Coldwell Banker Residential Brokerage does not guarantee the data accuracy. Data maintained by the MLS's may not reflect all real estate activity in the market.



## MLS Area: Deerfield



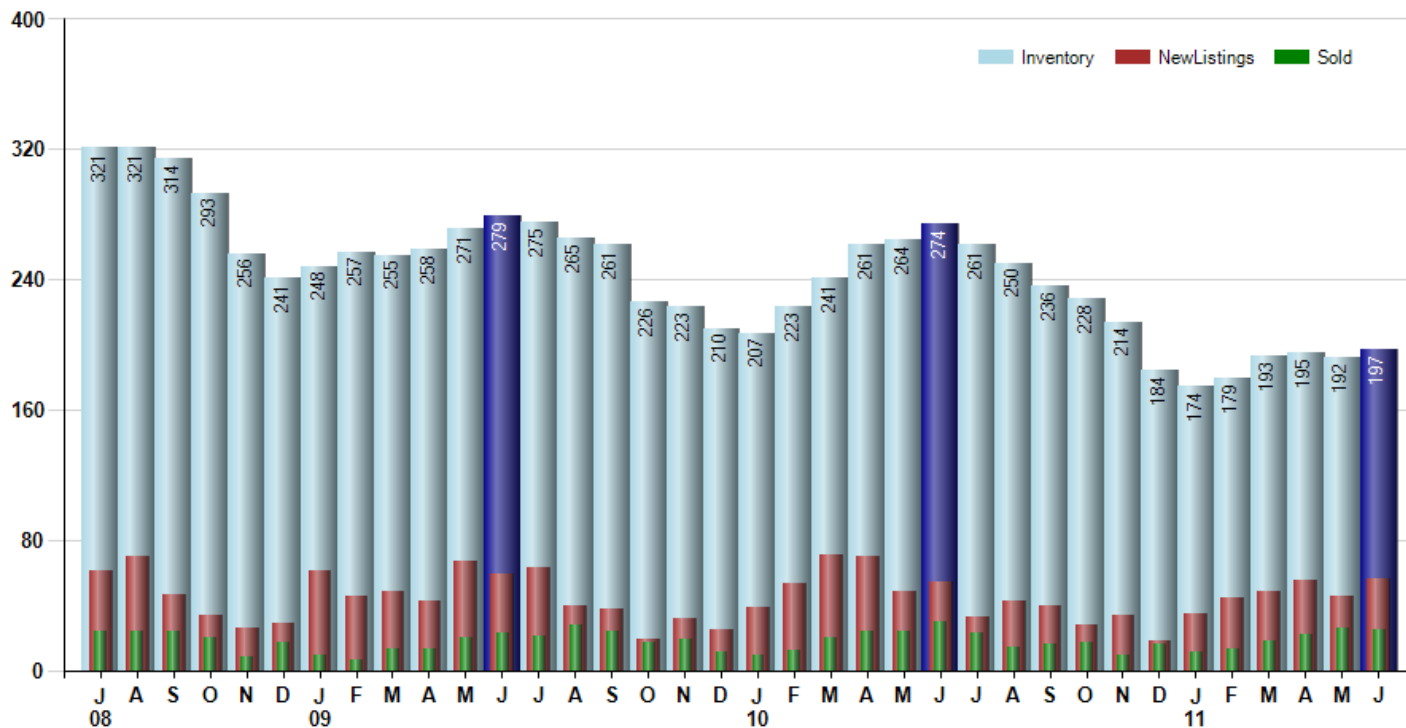
**ART WILSON**  
 Broker, Realtor  
 847-363-1599  
 Art.Wilson@cbexchange.com



Price Range: ALL | Properties: Single Family Home, Townhome, Condo

### Inventory / New Listings / Sales

This last view of the market combines monthly inventory of Properties for sale along with New Listings and Sales. The graph shows the basic annual seasonality of the market as well as the relationship between these items. The number of New Listings in June 2011 was 56, up 24.4% from 45 last month and up 3.7% from 54 in June of last year.



Based on information from Midwest Real Estate Data LLC for the period 7/1/2008 through 6/30/2011. Due to MLS reporting methods and allowable reporting policy, this data is only informational and may not be completely accurate. Therefore, Coldwell Banker Residential Brokerage does not guarantee the data accuracy. Data maintained by the MLS's may not reflect all real estate activity in the market.



## MLS Area: Deerfield



**ART WILSON**  
 Broker, Realtor  
 847-363-1599  
 Art.Wilson@cbexchange.com



Price Range: ALL | Properties: Single Family Home, Townhome, Condo

	J 08	A	S	O	N	D	J 09	F	M	A	M	J	J	A	S	O	N	D	J 10	F	M	A	M	J	J	A	S	O	N	D	J 11	F	M	A	M	J
Homes Sold	24	24	24	20	8	17	9	6	13	13	20	23	21	28	24	17	19	11	9	12	20	24	24	30	23	14	16	17	9	16	11	13	18	22	26	25
3 Mo. Roll Avg			24	23	17	15	11	11	9	11	15	19	21	24	24	23	20	16	13	11	14	19	23	26	26	22	18	16	14	14	12	13	14	18	22	24

	(000's) J 08	A	S	O	N	D	J 09	F	M	A	M	J	J	A	S	O	N	D	J 10	F	M	A	M	J	J	A	S	O	N	D	J 11	F	M	A	M	J
Median Sale Price	445	340	340	402	335	315	227	291	358	327	343	441	321	499	328	267	253	275	525	305	315	330	444	502	525	305	301	370	269	307	300	266	284	274	304	423
3 Mo. Roll Avg			375	360	359	351	292	278	292	325	343	370	368	420	383	365	283	265	351	368	382	317	363	425	490	444	377	325	313	315	292	291	283	275	287	333

	J 08	A	S	O	N	D	J 09	F	M	A	M	J	J	A	S	O	N	D	J 10	F	M	A	M	J	J	A	S	O	N	D	J 11	F	M	A	M	J
Inventory	321	321	314	293	256	241	248	257	255	258	271	279	275	265	261	226	223	210	207	223	241	261	264	274	261	250	236	228	214	184	174	179	193	195	192	197
MSI	13	13	13	15	32	14	28	43	20	20	14	12	13	9	11	13	12	19	23	19	12	11	11	9	11	18	15	13	24	12	16	14	11	9	7	8

	J 08	A	S	O	N	D	J 09	F	M	A	M	J	J	A	S	O	N	D	J 10	F	M	A	M	J	J	A	S	O	N	D	J 11	F	M	A	M	J
Days On Market	89	129	154	120	98	122	119	69	121	160	155	109	105	65	148	142	129	161	123	118	147	78	148	95	176	91	84	80	217	124	119	88	110	134	100	52
3 Mo. Roll Avg			124	134	124	113	113	103	103	117	145	141	123	93	106	118	140	144	138	134	129	114	124	107	140	121	117	85	127	140	153	110	106	111	115	95

	J 08	A	S	O	N	D	J 09	F	M	A	M	J	J	A	S	O	N	D	J 10	F	M	A	M	J	J	A	S	O	N	D	J 11	F	M	A	M	J
Price per Sq Ft	254	243	214	212	176	215	150	131	196	156	216	218	184	208	139	140	198	150	202	149	160	146	183	202	204	149	187	178	149	156	145	155	166	151	170	198
3 Mo. Roll Avg			237	223	201	201	180	165	159	161	189	197	206	203	177	162	159	163	183	167	170	152	163	177	196	185	180	171	171	161	150	152	155	157	162	173

	J 08	A	S	O	N	D	J 09	F	M	A	M	J	J	A	S	O	N	D	J 10	F	M	A	M	J	J	A	S	O	N	D	J 11	F	M	A	M	J
Sale to List Price	0.900	0.896	0.845	0.884	0.792	0.867	0.857	0.910	0.800	0.797	0.852	0.886	0.879	0.903	0.825	0.872	0.868	0.804	0.886	0.862	0.858	0.894	0.883	0.898	0.837	0.874	0.832	0.873	0.795	0.824	0.849	0.868	0.849	0.876	0.891	0.912
3 Mo. Roll Avg			0.880	0.875	0.840	0.848	0.839	0.878	0.856	0.836	0.816	0.845	0.872	0.889	0.869	0.867	0.855	0.848	0.853	0.851	0.869	0.871	0.878	0.892	0.873	0.870	0.848	0.860	0.833	0.831	0.823	0.847	0.855	0.864	0.872	0.893

	J 08	A	S	O	N	D	J 09	F	M	A	M	J	J	A	S	O	N	D	J 10	F	M	A	M	J	J	A	S	O	N	D	J 11	F	M	A	M	J
New Listings	61	70	46	34	26	29	61	45	48	43	67	59	63	40	38	19	32	25	39	53	71	70	48	54	33	43	40	28	34	18	35	44	48	55	45	56
Inventory	321	321	314	293	256	241	248	257	255	258	271	279	275	265	261	226	223	210	207	223	241	261	264	274	261	250	236	228	214	184	174	179	193	195	192	197
Sales	24	24	24	20	8	17	9	6	13	13	20	23	21	28	24	17	19	11	9	12	20	24	24	30	23	14	16	17	9	16	11	13	18	22	26	25

	(000's) J 08	A	S	O	N	D	J 09	F	M	A	M	J	J	A	S	O	N	D	J 10	F	M	A	M	J	J	A	S	O	N	D	J 11	F	M	A	M	J
Avg Sale Price	600	430	389	446	554	506	239	454	446	352	419	534	495	526	320	391	336	365	512	365	417	357	403	502	551	356	382	445	278	354	325	389	355	396	381	505
3 Mo. Roll Avg			473	422	463	502	433	400	380	417	405	435	482	518	447	412	349	364	404	414	431	380	392	421	486	470	430	394	368	359	319	356	357	380	377	427

